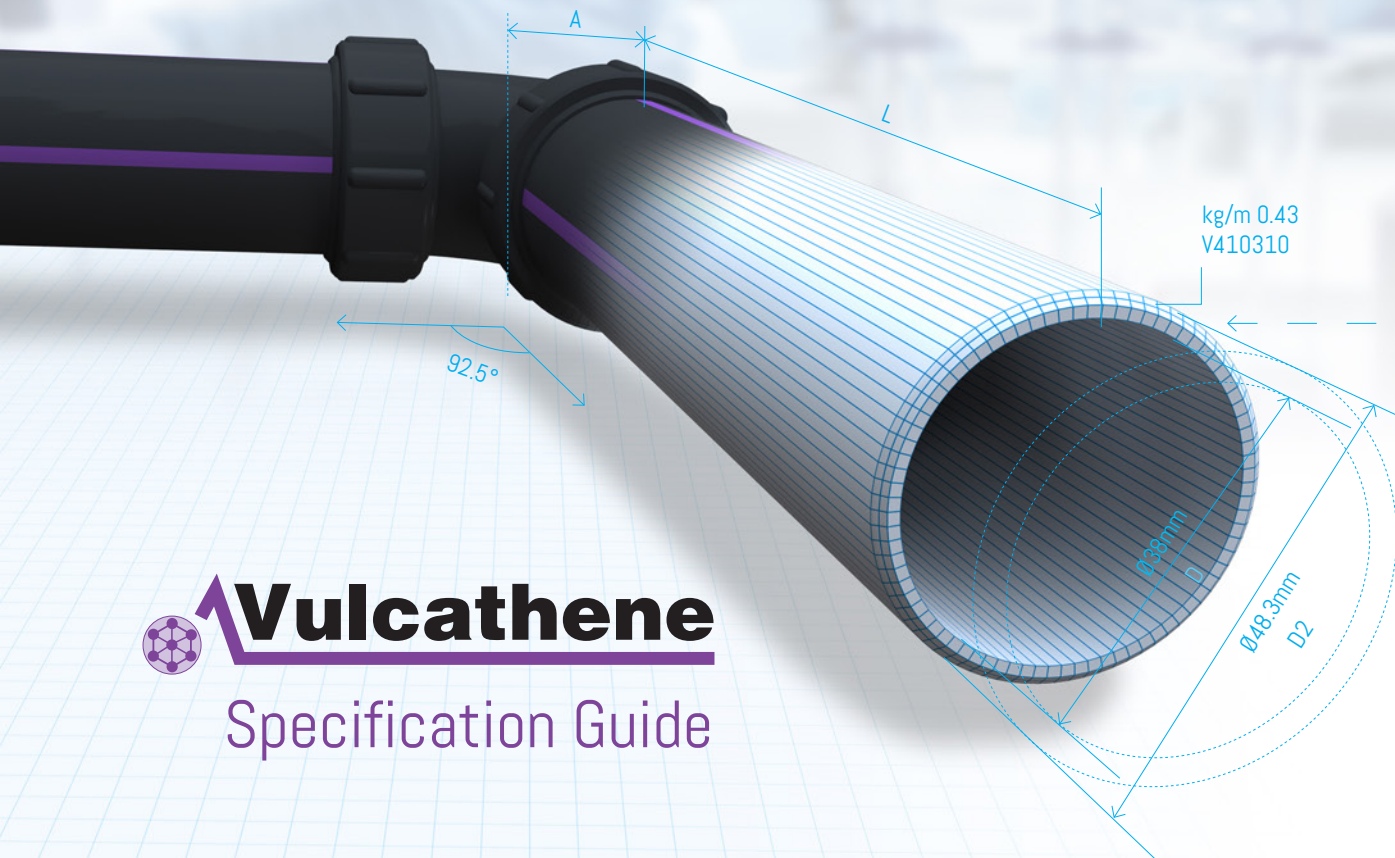


Vulcathene - Engineered for laboratory drainage



Vulcathene is the **market-leading chemical drainage system**, with proven performance in a wide range of laboratory applications worldwide for more than **65 years.**

Vulcathene is the only system that is fully BBA Approved for laboratory drainage.



Vulcathene is a purpose-designed and engineered system for the sole purpose of chemical containment and drainage. It is a complete laboratory waste system, offering the widest range of laboratory bench items including sinks, wastes, drip cups, anti-siphon bottle traps, borosilicate base traps, dilution recovery traps and catchpots.

 **Vulcathene**
Specification Guide

Design and Specification

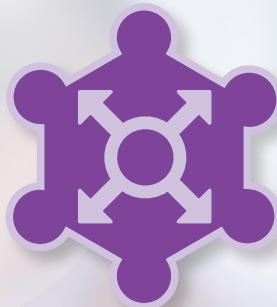
Our specialist team offers advice during the design stage of a project to ensure the most appropriate system is designed for each individual application.



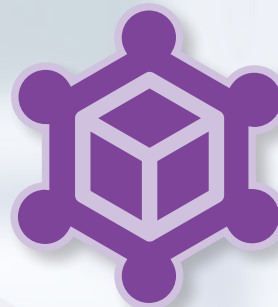
Click on the icons below to download a range of our specification tools.



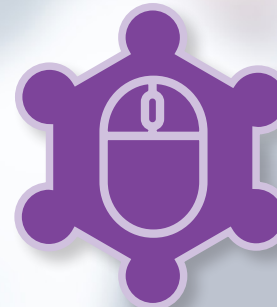
Specification
Clauses



Chemical
Resistance Guide



BIM Models



CAD Drawings

Chemical Performance

Vulcathene pipe and fittings offer resistance to the widest range of acids, alkalis and bases.

With a wide operational temperature range from -20°C to 100°C, Vulcathene is proven to be able to handle any combination of chemicals at a range of temperatures.

'Our company chemist is on hand to evaluate the chemicals and chemical combinations intended for use and advise on their suitability for the selected system'

Get in
touch with our
company chemist

**chemist@
aliaxis.com**

Get in touch
with our specification
support team

01543 471680

- option 2

**Vulcathene@
aliaxis.com**





Why Vulcathene?

- ✦ The only system BBA approved for laboratory drainage
- ✦ Specification and design advice
- ✦ Wide range of specification tools
- ✦ Complete system with comprehensive range of laboratory bench items
- ✦ Strong chemical resistance
- ✦ Choice of Enfuson and Mechanical jointing system
- ✦ Purple stripe easily identifies potentially hazardous chemical risk

Applications

Vulcathene is widely used within laboratories in a range of environments:



Hospitals



Universities



Schools



Pharmaceutical



Research



Industrial

Click 
on the images
to find out
more.

Easy Identification

Vulcathene is differentiated from standard black soil and rainwater pipe by 4 x coloured (violet) stripes to reduce health and safety risks for laboratory maintenance teams on site, who need to know which pipes are carrying potentially harmful chemicals.

The violet stripes present on Vulcathene pipe have been selected in accordance with **BS1710 (Basic Identification Colours and Colour Code Indication)** to identify the pipe as potentially carrying acid and other chemical waste.



Vulcathene Product Range

The widest range of bench solutions enables the design and specification of a complete chemical drainage laboratory system.



Sinks:

Vulcathene sinks are extremely robust and specially moulded with self-draining bases; bespoke sized sinks manufactured to a client's specific requirements can also be supplied.

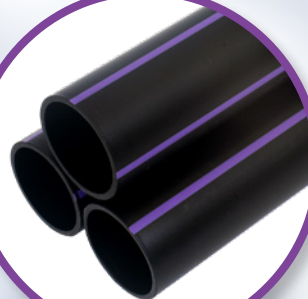


Borosilicate Glass Base Traps:

Vulcathene borosilicate glass base traps cater for particularly strong chemical solutions and organic solvents, while also aiding the identification and recovery of valuable solids.

Pipe:

Vulcathene pipe is produced in standard 4m lengths and is available in sizes from 38mm - 152mm



Anti-Siphon Traps:

Vulcathene anti-siphon traps are designed to retain their seals under the most demanding conditions to prevent the backflow of potentially hazardous fumes.



Dilution Recovery Traps:

Vulcathene dilution recovery traps are particularly useful where under bench height is limited and/or where additional dilution of chemicals is required.



Wastes:

Vulcathene BSP threaded wastes are suitable for use with ceramic, porcelain, metal or plastic sink outlets. Slotted wastes are also available for use where the waste has to accept an overflow.

Drip Cups:

Vulcathene drip cups have steep sloping sides to minimise splashing and wide rims for stability when mounting. Oval drip cups offer the flexibility of alternative flange fixings.

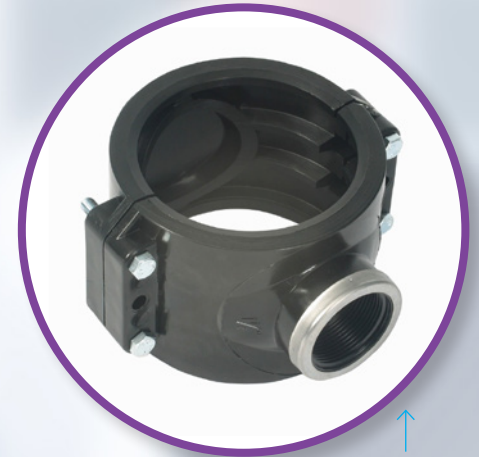
Note: All anti-siphon bottle and dilution recovery traps incorporate an adjustable/telescopic inlet for easier installation.

Vulcathene fittings



Air Admittance Valves:

Installed where stacks are to be terminated inside the building, these valves prevent the release of foul or toxic air while admitting air under conditions of reduced pressure in discharge pipes.



Repair Clamp Saddles:

Enable easy connection of new branch pipes to existing Vulcathene stacks.



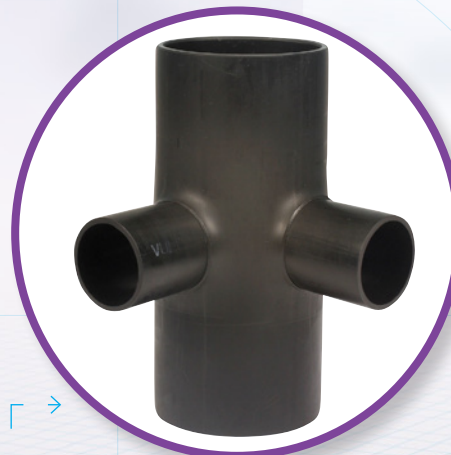
Thermal Stress Relief Units:

With the flexibility to be installed vertically or horizontally, these units eliminate the stresses resulting from thermal movement.



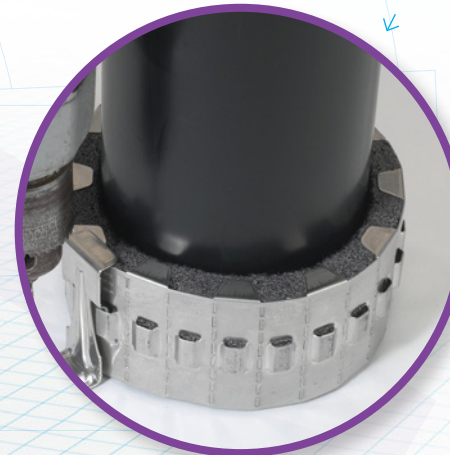
Access Pipes:

Positioned at critical points in the system, access pipes simplify the inspection and cleaning of blockages within the pipe network.



90° Corner Branch:

Available in a mechanical or enfusion connection, Corner branches allow for flexibility in design and reduced installation costs due to the lower number of fittings needed.



Fire Collars:

Vulcathene pipes, which pass through fire rated floors or walls, can be fire protected with the Unicollar intumescent fire protection collar, which is tested and approved for use on Vulcathene.

Joining Methods

A choice of joining systems allows flexibility in design, installation efficiencies and ease of system extensions and maintenance, while offering the assurance of robust joint integrity through highly-engineered product performance.

Mechanical

Recommended for joints to sinks and under benches, mechanical demountable joining allows the ability to disassemble the system, so joints can be easily remade without affecting the joint's efficiency, allowing system changes to be made effectively.

Enfusion

Recommended for sections that are not easily accessible, such as ceiling voids or drainage stacks or when buried. Electrofusion joining produces reliable, welded joints in minutes, with the ability to make several joints at the same time, reducing installation time and costs.



Customer Support

Technical Support

Providing assistance to the entire customer supply chain, our experienced technical support team offers product training, joining demonstrations and installation advice to support the successful completion of every project.

Customer Services

We pride ourselves on the high customer service levels we provide to each and every customer. Our customer services team offers support at every stage of a project from the point of order through to delivery and logistics and during the installation process.



Further Information
www.durapipe.co.uk

Technical Support Team
01543 471680 - option 2
Vulcathene@aliaxis.com

Customer Services
0844 800 5509

