

Talbot Pushfit



Talbot Pushfit - Fittings for Water Pipe



The Talbot Pushfit connection is a tried and tested method of connecting low, medium and high density metric polyethylene water pipe from 16mm to 63mm.

Benefits

- User Friendly**
The Talbot Pushfit fitting is quick and easy to use with no nuts to leave undone , simply push the pipe into the fitting.
- Stronger Than The Pipe**
The fittings grip and seal on the pipe increases with water pressure and tensile load. This means that the PE pipe will burst or neck before the connection fails. The Talbot Pushfit fitting is pressure rated PN 16.
- Tough and Robust**
Talbot Pushfit fittings are manufactured from high performance materials for resistance to distortion and corrosion and for strong threaded connections.
- Adaptor from Imperial to Metric pipe**
Select the fitting type you need, and using the imperial components that are available, convert the fitting to an adaptor.



Talbot Grippa Universal Service Connector

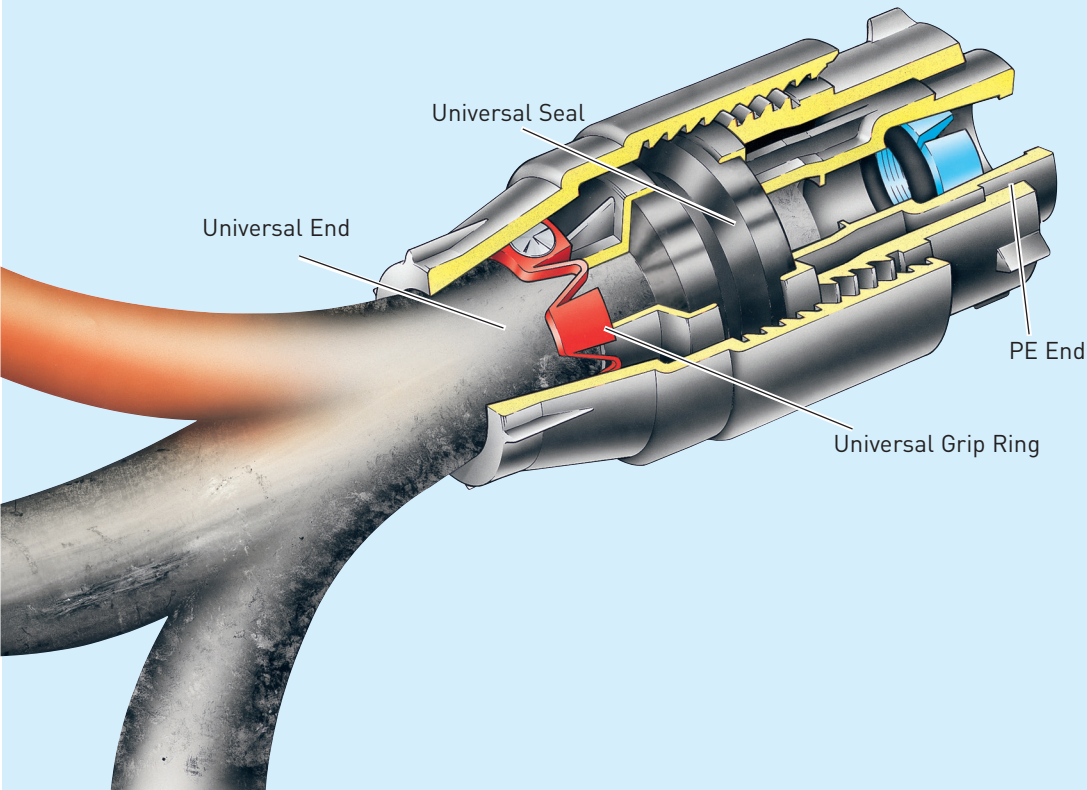


The Talbot Grippa is a universal fitting that connects onto a wide variety of existing lead, galvanised iron and copper pipes with no change of components. The range consists of just three fittings which suit all metal pipes with outside diameters of 15mm (3/4") to 34mm (3/8").

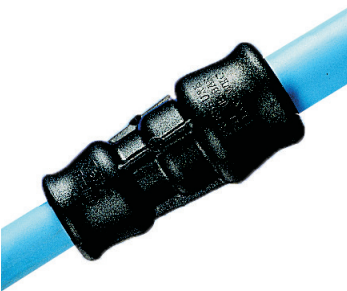
Benefits

- Universal**
One fitting securely connects onto lead, copper and galvanised iron service pipes.
- Simple to install**
Simply push the pipe into the fitting and tighten, no loose assembly of components or special preparation of the pipe or cutting of threads.
- Cost Effective**
With only three fittings covering the majority of lead, copper and galvanised iron pipe sizes, stock is dramatically reduced.

Range Information				PE End - Suits:
Universal End	3/8" Grippa	1/2" Grippa	3/4" Grippa	
Pipe OD range	15-21mm	21-27mm	27-34mm	Metric BS6572 and 6730 pipe with a liner and DIN and ISO pipes. (Blue grip ring, black 'O' ring marked 'M'), or Imperial B.S pipe (black grip ring, black 'O' ring).
Type of pipe				
Lead	3/8" 4lb-6lb	1/2" 5lb-9lb	3/4" 7lb-11lb	
Galvanised Iron	3/8"	1/2"	3/4"	
Copper	15mm, 1/2"	22mm, 3/4"	28mm, 1"	



Pushfit Connections



Connectors PE x PE

Code		Size	Bag Quantity	Weight	
Metric	Imperial			Metric	Imperial
E7652	E4340	16mm (3/8")	5	0.060	0.050
E6507	E2801	20mm (1/2")	5	0.063	0.053
E6075	E2802	25mm (3/4")	5	0.087	0.071
E6073	E2803	32mm (1")	5	0.143	0.113
E6510	E6511	40mm (1 1/4")	1	0.257	0.217
E6078	E4002	50mm (1 1/2")	1	0.424	
E6077	E4007	63mm (2")	1	0.696	0.605

Reducing Connectors PE x PE

Code		Size	Bag Quantity	Weight	
Metric	Imperial			Metric	Imperial
E7653	E4346	20mm (1/2") X 16mm (3/8")	5	0.062	
E7654	E4345	25mm (3/4") X 16mm (3/8")	5	0.077	
E6463	E2817	25mm (3/4") x 20mm (1/2")	5	0.080	
E6465	E3408	32mm (1") x 20mm (1/2")	5	0.098	
E6060	E2818	32mm (1") x 25mm (3/4")	5	0.118	
E9014	E9982	40mm (1 1/4") x 25mm (3/4")	1	0.150	
E6516	E9983	40mm (1 1/4") x 32mm (1")	1		
E6466	E3999	50mm (1 1/2") x 20mm (1/2")	1	0.250	
E6467	E4000	50mm (1 1/2") x 25mm (3/4")	1	0.260	
E6061	E4001	50mm (1 1/2") x 32mm (1")	1	0.283	
E7790	E7793	50mm (1 1/2") x 40mm (1 1/4")	1	0.342	0.305
E6468	E4003	63mm (2") x 20mm (1/2")	1	0.040	
E6469	E4004	63mm (2") x 25mm (3/4")	1	0.409	
E6470	E7402	63mm (2") x 32mm (1")	1	0.446	
E8118	E8610	63mm (2") x 40mm (1 1/4")	1		
E6076	E4006	63mm (2") x 50mm (1 1/2")	1	0.552	

Grippe - The Universal Service Adaptor

Code		Size	Bag Quantity	Weight	
Metric	Imperial			Metric	Imperial
E7471	E6604	20mm (1/2") x 3/8"	5	0.177	
E7470	E6264	20mm (1/2") x 1/2"	5	0.239	
E7472	E6606	20mm (1/2") x 3/4"	5	0.333	
E7469	E6607	25mm (3/4") x 3/8"	5	0.169	
E7468	E6608	25mm (3/4") x 1/2"	5	0.234	
E7467	E6265	25mm (3/4") x 3/4"	5	0.316	

Adaptors, Pushfit - PE x Copper Table X

Code		Size	Bag Quantity	Weight	
Metric	Imperial			Metric	Imperial
E4145	E4142	20mm (1/2") x 15mm Copper	5	0.054	0.048
E4147	E4150	25mm (3/4") x 15mm Copper	5	0.079	
E5182	E5183	25mm (3/4") x 22mm Copper	5	0.094	
E5945	E5946	32mm (1") x 28mm Copper	5		



Pushfit Connections

Adaptors, Pushfit - PE x Male Threaded

Code		Size	Bag Quantity	Weight	
Metric	Imperial			Metric	Imperial
E7655	E4342	16mm (3/8") x 1/2" MI	5		
E6483	E1932	20mm (1/2") x 1/2" MI	5	0.036	0.030
E7600	E6609	20mm (1/2") x 3/4" MI	5	0.037	
E7601	E6610	25mm (3/4") x 1/2" MI	5	0.053	
E6484	E1933	25mm (3/4") x 3/4" MI	5	0.054	0.046
E7602	E4699	32mm (1") x 1/2" MI	5		
E7271	E6611	32mm (1") x 3/4" MI	5	0.102	
E6485	E2715	32mm (1") x 1" MI	5	0.090	
E9161	-	32mm (1") x 2" MI	1	0.112	
E6517	E6518	40mm (1 1/4") x 1 1/4" MI	1		
	E11083	40mm (1 1/4") x 1 1/2" MI	1		
E11087	E7408	50mm (1 1/2") x 1 1/2" MI	1	0.228	
E9162	E4016	63mm (2") x 2" MI	1	0.389	0.343

Tank Connectors - PE x Male Thread (Complete with nut and washers)

E7636	E7263	25mm (3/4") x 3/4" MI	5	0.072	
-------	-------	-----------------------	---	-------	--

Adaptors, Pushfit - PE x Female Threaded

Code		Size	Bag Quantity	Weight	
Metric	Imperial			Metric	Imperial
E6478	E4343	16mm (3/8") x 1/2" taper FI	5		
E6479	E2722	20mm (1/2") x 1/2" taper FI	5	0.042	
E11088	E11084	20mm (1/2") x 3/4" taper FI	5		
E8114		25mm (3/4") x 1/2" parallel FI	5		
E7137	E2723	25mm (3/4") x 3/4" parallel FI	5	0.061	
E7567		25mm (3/4") x 3/4" parallel FI	5		
E7566		25mm (3/4") x 1" parallel FI	5		
E7730	E6612	32mm (1") x 1/2" taper FI	5	0.127	
E7270	E6613	32mm (1") x 3/4" taper FI	5	0.120	
E7694		32mm (1") x 3/4" parallel FI	5		
E7269	E2724	32mm (1") x 1" taper FI	5	0.105	
E7568		32mm (1") x 1" parallel FI	5		
E9020		32mm (1") x 1 1/4" parallel FI	5		
E9148		32mm (1") x 1 1/2" parallel FI	5		
E11542		40mm (1 1/4") x 1" taper FI	1		
E6519		40mm (1 1/4") x 1 1/4" parallel FI	1	0.168	
	E6520	40mm (1 1/4") x 1 1/4" taper FI	1		
E7373	E7409	50mm (1 1/2") x 1 1/2" taper FI	1	0.267	
E6480		50mm (1 1/2") x 1 1/2" parallel FI	1		
E8116		50mm (1 1/2") x 2" parallel FI	1		
E7375	E4014	63mm (2") x 2" taper FI	1	0.460	
E6481		63mm (2") x 2" parallel FI	1		

Stop End, Pushfit - PE x Blank

Code		Size	Bag Quantity	Weight	
Metric	Imperial			Metric	Imperial
E6489	E3367	20mm (1/2")	5	0.051	
E6490	E3368	25mm (3/4")	5	0.074	
E6491	E3369	32mm (1")	5	0.118	0.099
E8571		40mm (1 1/4")	1		
E7268	E5027	50mm (1 1/2")	1	0.224	
E7267	E6614	63mm (2")	1	0.376	

Pushfit Connections

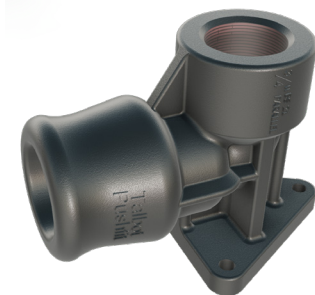


Pushfit Connections



Adaptors, Pushfit - PE x Female Threaded

Code		Size	Bag Quantity	Weight	
Metric	Imperial			Metric	Imperial
E7628	E5200	20mm (1/2") x 1/2" FI (straight)	5	0.088	
E5044	E5202	20mm (1/2") x 3/4" FI (straight)	5		
E7629	E8441	25mm (3/4") x 1/2" FI (straight)	5		
E7630		25mm (3/4") x 3/4" FI (straight)	5		
E7494		25mm (3/4") x 1" FI (straight)	5		
E7631	E5203	32mm (1") x 1" FI (straight)	5		
E7632	E5035	20mm (1/2") x 1/2" FI (bent)	5	0.091	
E5031		20mm (1/2") x 3/4" FI (bent)	5		
E7633	E5034	25mm (3/4") x 1/2" FI (bent)	5	0.123	
E7634	E5033	25mm (3/4") x 3/4" FI (bent)	5		
E7635	E5032	32mm (1") x 1" FI (bent)	5		



Wall Plate Elbows

Code		Size	Bag Quantity	Weight	
Metric	Imperial			Metric	Imperial
E8245		16mm (5/8") x 1/2"	5		
E7609	E2796	20mm (1/2") x 1/2"	5	0.086	
E7610	E2797	25mm (3/4") x 1/2"	5	0.107	
E7611	E3407	25mm (3/4") x 3/4"	5	0.086	

All fittings are in plastic unless otherwise stated.



Tees, Equal - PE x PE x PE

Code		Size	Bag Quantity	Weight	
Metric	Imperial			Metric	Imperial
E7657	E4448	16mm (5/8")	5		
E6492	E3016	20mm (1/2")	5	0.108	0.091
E6493	E3019	25mm (3/4")	5	0.150	0.122
E6494	E3022	32mm (1")	5	0.244	
E6512	E6513	40mm (1 1/4")	1		
E6495	E4010	50mm (1 1/2")	1	0.690	
E6496	E4011	63mm (2")	1	1.112	



Elbows (90°) - PE x PE

Code		Size	Bag Quantity	Weight	
Metric	Imperial			Metric	Imperial
E6461	E2769	20mm (1/2") x 20mm (1/2")	5	0.069	0.058
E8537	-	25mm (3/4") x 20mm (1/2")	5	0.076	
E6471	E2770	25mm (3/4") x 25mm (3/4")	5	0.098	0.081
E9009	-	32mm (1") x 25mm (3/4")	5	0.117	
E6472	E2771	32mm (1") x 32mm (1")	5	0.160	
E6514	E6515	40mm (1 1/4") x 40mm (1 1/4")	1		
E6473	E7404	50mm (1 1/2") x 50mm (1 1/2")	1	0.464	
E6474	E4009	63mm (2") x 63mm (2")	1	0.772	



Tees, Un-Equal - PE x PE x PE

Code		Size	Bag Quantity	Weight	
Metric	Imperial			Metric	Imperial
E7613	E3416	20mm (1/2") x 20mm (1/2") x 32mm (1")	5		
E6497	E3023	25mm (3/4") x 25mm (3/4") x 20mm (1/2")	5	0.130	
E7612	E3417	32mm (1") x 20mm (1/2") x 20mm (1/2")	5		
E7613	E3416	20mm (1/2") x 20mm (1/2") x 32mm (1")	5		
E6498	E3403	32mm (1") x 32mm (1") x 20mm (1/2")	5	0.215	0.171
E7614	E3419	25mm (3/4") x 25mm (3/4") x 32mm (1")	5	0.191	0.020
E6499	E3405	32mm (1") x 32mm (1") x 25mm (3/4")	5		
E6500	E4013	63mm (2") x 63mm (2") x 25mm (3/4")	1	0.725	
E6501	E4012	63mm (2") x 63mm (2") x 32mm (1")	1	0.728	



Elbows (90°) - PE x Male Thread

Code		Size	Bag Quantity	Weight	
Metric	Imperial			Metric	Imperial
E6236	E4874	25mm (3/4") x 3/4" MI	5	0.066	
E6237	E4875	32mm (1") x 1" MI	5	0.110	



Tees, Un-Equal - PE x PE x Female Taper Thread

Code		Size	Bag Quantity	Weight	
Metric	Imperial			Metric	Imperial
E6502	E3017	20mm (1/2") x 20mm (1/2") x 1/2" taper FI	5	0.076	
E6503	E3020	25mm (3/4") x 25mm (3/4") x 1/2" taper FI	5	0.121	
E6504	E3021	25mm (3/4") x 25mm (3/4") x 3/4" taper FI	5	0.126	
E6505	E3404	32mm (1") x 32mm (1") x 1" taper FI	5		
E8782	E6573	50mm (1 1/2") x 50mm (1 1/2") x 1 1/2" taper FI	1		
E7044	E6574	63mm (2") x 63mm (2") x 2" taper FI	1	0.947	



Elbows (90°) - PE x Female Thread

Code		Size	Bag Quantity	Weight	
Metric	Imperial			Metric	Imperial
E6282	E6281	20mm (1/2") x 1/2" FI (taper)	5		
E6475	E2776	20mm (1/2") x 1/2" FI (parallel)	5	0.051	
E6276	E6275	25mm (3/4") x 1/2" FI (taper)	5		
E6476	E2780	25mm (3/4") x 1/2" FI (parallel)	5	0.073	
E6277	E6278	25mm (3/4") x 3/4" FI (taper)	5		
E6477	E2777	25mm (3/4") x 3/4" FI (parallel)	5	0.077	
E6280	E6279	32mm (1") x 1" FI (taper)	5		
E6462	E3406	32mm (1") x 1" FI (parallel)	5	0.121	
E7473	E6564	50mm (1 1/2") x 1 1/2" FI (taper)	5	0.350	
E8780		50mm (1 1/2") x 1 1/2" FI (parallel)	5		
E7474	E6563	63mm (2") x 1 1/2" FI (taper)	5	0.577	
E8781		63mm (2") x 2" FI (parallel)	5		



Adaptors, Leadfit - PE x Lead

Code	Size	Bag Quantity	Weight
E9287	20mm (1/2") x 3/4" 9lb Lead	5	
E9289	25mm (3/4") x 3/4" 9lb Lead	5	
E9290	25mm (3/4") x 1" 16lb Lead	5	
E9292	32mm (1") x 1" 16lb Lead	5	

Pushfit Connections



Double Check Valve - PE x PE

Code		Size	Bag Quantity	Weight
Metric	Imperial			
E7626	E4208	20mm (½")	5	
E7627		25mm (¾")	5	



Repair Connectors - PE x PE

Code		Size	Bag Quantity	Weight
Metric	Imperial			
E7783	E7785	20mm (½")		
E7776	E7774	25mm (¾")		
E7779	E7781	32mm (1")		



Extractors - Plastic

Code	Size	Bag Quantity	Weight
E2946	20mm (½")	10 sets	0.051
E2947	25mm (¾")	10 sets	0.065
E2948	32mm (1")	10 sets	0.063



Extractors - Metal

Code	Size	Bag Quantity	Weight
E2935	20mm (½")	1 set	0.041
E2936	25mm (¾")	1 set	0.041
E2937	32mm (1")	1 set	0.064
E2554	40mm (1¼")	1 set	0.086
E2938	50mm (1½")	1 set	0.108
E2939	63mm (2")	1 set	0.179



Bevellers - Metal

Code	Size	Bag Quantity	Weight
1775	20mm (½")	1	0.036
1776	25mm (¾")	1	0.167
1777	32mm (1")	1	0.088
2534	40mm (1¼")	1	0.120
1779	50mm (1½")	1	0.177
1780	63mm (2")	1	0.588



Liners for PE Pipe

Code	Size	Bag Quantity	Weight
E1829	20mm (SDR 9)	10	0.004
E1830	25mm (SDR 11)	10	0.005
E1832	32mm (SDR 11)	10	0.010
E8009	40mm (SDR 11)	5	
E4230	50mm (SDR 11)	5	0.033
E4217	63mm (SDR 11)	5	0.059



Components, PE - Grip Rings

Code				Size	Bag Quantity	Weight
Metric	Imperial	HG	NG			
1890	1884	9760	10154	20mm x (½")	10	
1891	2634	9723	10156	25mm x (¾")	10	
1894	1887	9725	10157	32mm x (1")	10	
6159	6160	-	-	40mm x (1¼")	5	
7745	1889	-	-	50mm x (1½")	5	
7746	2658	-	-	63mm x (2")	5	



Components, PE - 'O' Rings

Code				Size	Bag Quantity	Weight
Metric	Imperial	HG	NG			
1861	1856	1855	3355	20mm x (½")	10	
1862	1857	1857	1862	25mm x (¾")	10	
1863	1859	1859	2599	32mm x (1")	10	
7315	6251	-	-	40mm x (1¼")	5	
1864	1860	-	-	50mm x (1½")	5	
1865	2598	-	-	63mm x (2")	5	



Components, Lead Grip & 'O' Rings

Code		Size	Bag Quantity	Weight
Metric	Imperial			
-	9068	Grip Ring - ¾" 9lb	10	
-	9069	Grip Ring - 1" 16lb	10	
-	9116	'O' Ring - ¾" 9lb	10	
-	9117	'O' Ring - 1" 16lb	10	



Converters, Pushfit x Female Thread

Code		Size	Bag Quantity	Weight
Metric	Imperial			
E5062	-	20mm x ½" FI	5	0.027
E5061	-	20mm x ¾" FI	5	0.028
E5060	-	25mm x ½" FI	5	
E5058	-	25mm x ¾" FI	5	0.042
E5059	-	25mm x 1" FI	5	0.045
E5057	-	32mm x 1" FI	5	0.073
E5056	-	32mm x 1¼" FI	5	0.081



Talbot Pushfit - PE To Lead Pipe Conversion



The Talbot Pushfit connector has for many years provided a quality and reliable way of joining PE pipe for potable water distribution networks throughout the world. This tried and tested method of connecting pipe has now been developed to suit lead pipe and offers the same high levels of performance associated with the original Talbot Pushfit fitting. Talbot Leadfit fittings are quick and easy to assemble. The pipe is simply pushed fully home into the fitting, past both the grip and 'O' ring, no further tightening is needed. The Pushfit principle ensures that the pipe is held securely within the fitting and seals against working pressures up to 16 bar.

The Leadfit fitting utilises a standard Talbot Pushfit body with a set of specially designed inter-changeable components that enable the Talbot Leadfit fitting to grip and seal on lead pipe.

Benefits

- Quick to Install**
Both the lead and PE pipe are simply pushed into the fitting - no loose nuts or other fixings to worry about.
- Stronger Than The Pipe**
In tests Leadfit is consistently stronger than the lead or PE pipe - even at pressures considerably above normal mains working pressure.
- Ideal in Cramped Conditions**
The simplicity of Leadfit makes it ideal when making transitions from lead pipe in poorly accessed areas, like under a kitchen sink. No spanners or tools are needed to make an effective installation.

The Talbot Leadfit fitting is available in two forms, firstly a range of pre-assembled fittings for connection to lead pipe. Lead to PE adaptors, lead to female or male threaded adaptors as well as lead to copper adaptors are all available. An alternative to buying a pre-assembled fitting and in order to give users full advantage of the flexibility and extensive range of the Talbot Pushfit connection, Talbot Leadfit components are also supplied separately and can quickly and easily convert any Pushfit fitting into a fitting for lead pipe. Fittings and components are available for lead pipe in sizes 3/4" 9lb (29.41mm) using 32mm Pushfit bodies and 1" 16lb (39.22mm) using 40mm Pushfit bodies.

User experience indicates that Pushfit fittings cope better with adverse site conditions than compression fittings. However if a connection failure occurs please check that:

- The pipe has been pushed fully home.
- The 'O' ring or the grip ring are not damaged.
- Correct components have been used.
- Pipe is not excessively scored at the sealing area.

Pushfit Assembly Instructions

1a. For metric British standard pipe only, push the correct liner fully into the pipe.

1b. For imperial BS, DIN and ISO pipe only. Bevel the pipe. No liner is required.

2. Push the pipe fully into the fitting with a slight twist.

3. Ensure that the pipe passes two points of resistance and is fully seated.

Pushfit Dismantling Instructions

1. Slide extractors home and withdraw the pipe.

2. Extract the grip ring with a screwdriver. Do not re-use the grip ring.

3. Extract and inspect the 'O' ring - replace it if damaged.

4. Insert a new grip ring by forming a figure '6' and pressing it in.

5. Ensure the grip ring is inserted the correct way round.

Grippa Assembly Instructions

Set out below are the assembly instructions for the universal end of the Grippa fitting. For instructions on how to assemble the Pushfit end of the connection please refer to the Pushfit assembly instructions shown above.

1. Cut the pipe square and ensure it is clean, round and within tolerance. Scrape off any loose paint or deep scratches.

2. Push the universal end of the fitting onto the pipe, PAST the first point of resistance and UP TO the second.

3. Hand tighten the nut on the PE end.

4. Tighten with a spanner or wrench a further 1 1/2 turns.



www.talis-uk.com

TALIS is the undisputed Number One for water transport and water flow control. TALIS has the best solutions available in the fields of water and energy management as well as for industrial and communal applications. We have numerous products for comprehensive solutions for the whole water cycle – from hydrants, butterfly valves and knife gate valves through to needle valves. Our experience, innovative technology, global expertise and individual consultation processes form the basis for developing long-term solutions for the efficient treatment of the vitally important resource “water”.



TALIS UK

Brackla Industrial Estate
Bridgend, Wales CF31 2AX
United Kingdom

PHONE +44 (0)845 077 9797

FAX +44 (0)845 077 9798

E-MAIL enquiries@talis-group.com

INTERNET www.talis-uk.com

Note: Specifications may be changed without notification at any time. Copyright: No copying without express written permission of TALIS. TALIS is a Registered Trademark. TALBOT Connections Catalogue (06/16)