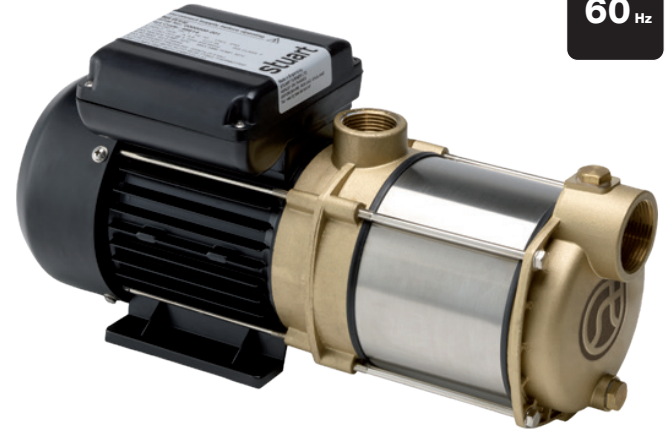


STUART

CH 4 Centrifugal Horizontal Multistage Pumps

The CH range of centrifugal multistage pumps are ideal for pressure boosting in applications where long pipe runs or high heads may be involved.

CH pumps are self priming up to 5 metres and offer a high quality, reliable solution with flow rates up to 174 litres per minute and heads up to 74 metres. The range is suitable for commercial or domestic use, pumping hot or cold water.

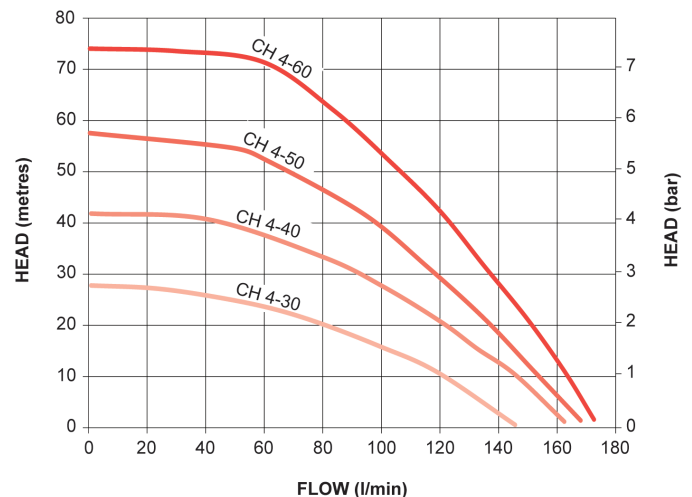


Features

- Flow rates up to 174 litres per minute and heads up to 74 metres
- Durable brass and stainless steel construction
- Multistage centrifugal pump
- Extended life mechanical seal
- Quiet operation
- Continuously rated induction motor
- Self priming up to 5 metres
- Dry run protection
- 1 year guarantee

Application

- The CH 4 range of pumps are the ideal base unit for pressure boosting sets or for applications where long pipe runs or high heads may be involved
- Suitable for domestic or commercial use, pumping hot or cold water



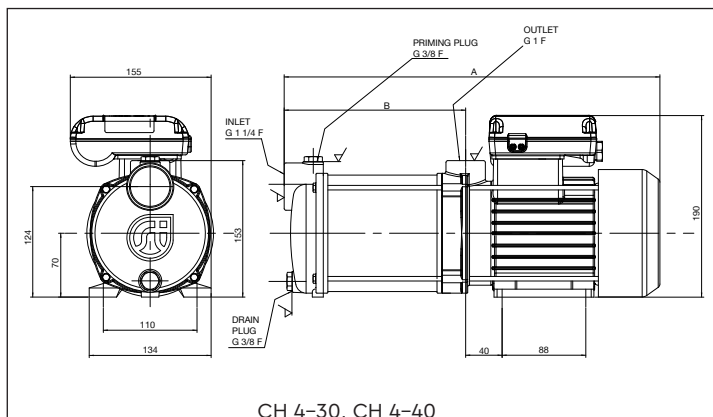
Pump Model		CH 4-30 60 Hz 46643	CH 4-40 60 Hz 46644	CH 4-50 60 Hz 46645	CH 4-60 60 Hz 46646
General	Guarantee	1 year			
	Approvals	CE			
Features	Pump type	Centrifugal multistage			
	Priming vent plug	✓			
	Self priming	✓			
	Mechanical seal	EPDM / Carbon / Ceramic			
	Noise	67 dB(A)	68 dB(A)	69 dB(A)	70 dB(A)
Materials	Pump body	Brass / stainless steel			
	Impeller	Stainless steel			
Performance	Maximum head (closed valve)	27 metres	42 metres	56 metres	74 metres
	Performance @ 50 l/min	25 metres	40 metres	53 metres	72 metres
	Performance @ 100 l/min	16 metres	28 metres	39 metres	54 metres
	Maximum flow	147 l/min	163 l/min	157 l/min	174 l/min
	Minimum static inlet pressure	0.05 bar (0.5 metres)			
	Maximum static inlet pressure	1.0 bar (10 metres)			
	Maximum static outlet pressure	1.2 bar (12 metres)			
	Maximum working pressure*	600 kPa (6 bar)		900 kPa (9 bar)	
	Max. ambient air temperature	50 °C	50 °C	55 °C	50 °C
	Min / Max water temperature**	Min 4 °C / Max 65 °C			
	Maximum Suction Lift***	5 metres			
Connections	Pump connections	G 1¼ female (inlet), G 1 female (outlet)			
Motor	Type	Induction, auto-reset thermal trip			
	Duty rating	Continuous (S1) @ 2.5 l/min and above			
Electrical	Power supply / phase / frequency	220 V a.c. / 1 / 60 Hz			
	Current (full load)	5.1 Amps	7.7 Amps	10.2 Amps	13.6 Amps
	Power consumption	1070 Watts	1654 Watts	2203 Watts	2921 Watts
	Fuse rating	13 Amps			16 Amps
	Power cable (pre-wired)	0.75 metres			
Physical	Enclosure protection	IPX5			
	Length	360 mm	384 mm	431 mm	456 mm
	Width	155 mm		187 mm	
	Height (excluding hoses)	190 mm		210 mm	
	Weight (including fittings)	9.6 Kg	10.1 Kg	15.4 Kg	17.8 Kg

* The maximum pressure that can be applied to the pump under any installation conditions.

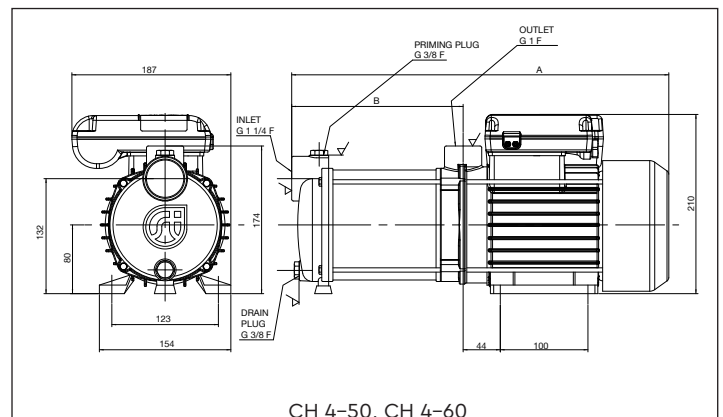
** A stored water temperature of 60 °C is considered sufficient to meet all normal requirements and will minimise deposition of scale in hard water areas.

*** With footvalve fitted.

Although these pumps are self priming we recommend a footvalve/strainer is used if a suction lift is required.



Pump Description	Dim. 'A'	Dim. 'B'
CH 4-30	360 mm	146 mm
CH 4-40	384 mm	170 mm



Pump Description	Dim. 'A'	Dim. 'B'
CH 4-50	431 mm	198 mm
CH 4-60	456 mm	222 mm

Stuart Turner Limited reserves the right to amend specifications without notice.