



Tamper proof lock



BROEN BALLOFIX® Lockable

For protection of water resources

BROEN Building Installations offer professional valve and fitting systems for any plumbing installation, sold via professional plumbing wholesalers. We deliver complete system solutions based on a broad range of BROEN products and products from our sister companies in Aalberts Industries.

We are by your side all the way; a competent sparring partner with broad experience and professional expertise across a wide spectrum of disciplines. We deliver reliable installations and work continuously to create new advantages for you.

Protection of water resources

BROEN BALLOFIX® Lockable is a new type in the well known BALLOFIX® product range.

BALLOFIX® Lockable is designed specially to protect against unwanted opening/closing of the water supply, for instance schools, institutions and public buildings.

The top part of the valve is designed with a tamper proof lock, which must be operated by a key. The key can only be removed from the lock in closed position. The lock is equipped with a master key which ensures that it is only necessary with one key to several locks.

After removal of the top, the valve can be operated by means of an Allen key (hexagon or pentagon) or a butterfly metal handle.

Application

BALLOFIX® Lockable is recommended for use in connection with water meters for the protection of water resources.

BALLOFIX® Lockable provides an excellent solution for the water authorities in order to solve problems with non-payment of water rates.

BUILDING
INSTALLA-
TIONS

BUILDING
CONTROLS

DISTRICT
HEATING

OIL & GAS

LAB &
EMERGENCY
SHOWERS

BROEN BALLOFIX® Lockable

Advantages

- Cost effective
- Combined anti theft protected valve and shut off valve
- Comprehensive product range
- Elegant design
- Positive internal stop
- Easy service of the valve
- Master key system

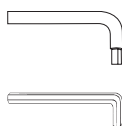


DIMENSIONS AND DATA

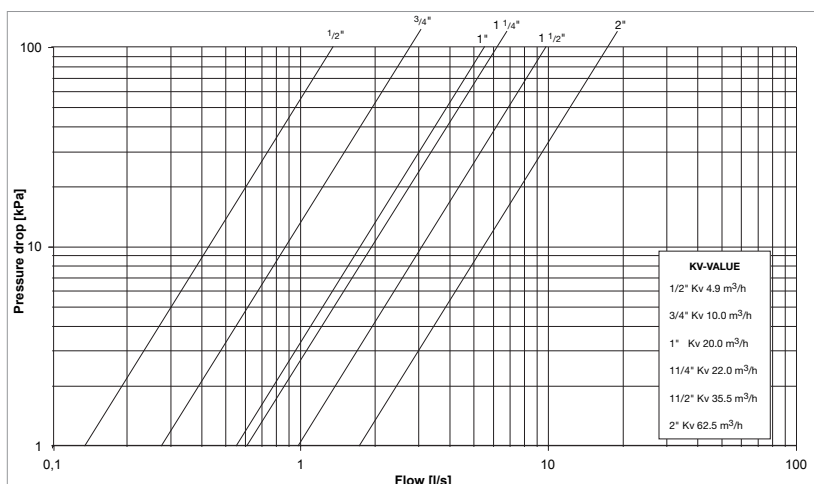
Dimension	Type	Version	BROEN no.
1/2" x 1/2"	female/female RP	straight	33 993 00 (Hexagon)
3/4" x 3/4"	female/female RP	straight	34 993 00 (Hexagon)
1" x 1"	female/female RP	straight	35 993 00 (Hexagon)
1 1/2" x 1 1/2"	female/female RP	straight	37 993 00 (Hexagon)
2" x 2"	female/female RP	straight	38 993 00 (Hexagon)
1/2" x 3/4" (SW)*	male/female	straight	34 997 00 (Pentagon)
3/4" x 1" (SW)*	male/female	straight	34 199 90 (Pentagon)

SPAREPARTS AND ACCESSORIES

Type	BROEN no.
Pentagon key	3371015 (3 mm)
Pentagon key	3750515 (5 mm)
Hexagon key	96K0010 (3mm)
Hexagon key	96K0002 (5mm)



PRESSURE DROP GRAPH



USER GUIDE

When water supply is to be closed:



Put on the key



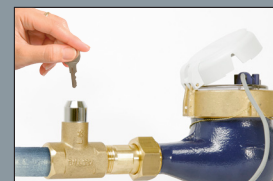
Turn the key and take off the lock



Take the hexagon/pentagon key and shut off the water supply



Mount the lock



Turn the key and dismount it

Materials

- Surface: Plain brass
- Material: CW 614 N / CW 617N
- Thread: Parallel ISO 228/1 according to BS 2779
- Thread: RP thread - ISO 7/1 according to BS 21.
- Media: Potable water. Seperate range available for gas
- Max. temperature: 120° C
- Max. pressure: 16 bar fluid pressure
- Approvals: WRAS, SIRIM & KIWA

PRINCIPLE

