



Q AVIATION

"Q for Quality"

MISSION BACKGROUND

We at Q-Aviation believe that every hour counts. That is why we would like to pave the way for you in making an order as smooth as possible.

Quality is a habit that has been adopted into the Q working principles. Quality to us means:

- ➔ Work according to the regulation of ISO9001:2015.
- ➔ Deliver products in compliance with applicable regulations.
- ➔ Deliver tested products that include testing report.
- ➔ Deliver in time.
- ➔ Stimulate employees to improve the production process.
- ➔ Automate our system to tackle human error.
- ➔ Transparency towards all customers.

REQUEST TO THE MARKET

Nowadays the Heliplatform becomes more demanding and fast hands-on mentality is requested at all cost. At Q-Aviation we believe that a long-term business to business relationship is required in order to respond to this change of mentality.

We believe that when a customer has complete insight in our current stock database, datasheets and delivery terms, he can respond to his customer in a matter of minutes.

The request for datasheets and the ability to compare products over the internet has made drastic changes to the world. We believe that when we offer our customers transparency, we can build a long-term relationship.

VISION BACKGROUND

At Q-Aviation, we strive to have 80% of our products in stock in order to deliver you just in time for all your project deadlines.

Besides our vast approach on stock management, we offer our clients a transparency on all order states by our business to business system, that is beyond the standard in the field at this moment and we will be innovating this system on a day to day basis.

We understand that you are not the end user and that every hour of the day can be crucial in order to get the delivery as early as possible. Therefore we strive to keep 80% of all the products in stock according to monthly sales numbers.

Offshore

Perimeter Lights	4
Flushmount Lights	4
Obstruction Lights	4
Floodlights	6
Status Lights	6
Controllers	6
Windsock Assemblies	8
Windsocks	8
Approach Light Systems	10
Q-TDPM	10
Solar Kits	10

TDPM

Q-Aviation Circle and Letter "H" Lighting Assembly	12
--	----

Onshore

Perimeter Lights	14
Flushmount Lights	14
Obstruction Lights	14
Taxi Lights	16
Beacon Light System	16
Floodlights	16
Approach Lights	18
Windsock Assemblies	20
Windsocks	22

Q-Perimeter Light

The Q-Perimeter Light is the 50 cd perimeter light for all helidecks. In compliance with ICAO annex 14, volume 2, FAA FATO Lights and CAP437 Perimeter Lights. The Q-Perimeter light is available in several configurations such as frangible, rigid and pole mounted.



Technical specifications

Enclosure:	Aluminum, powder coated	Cable Glands:	2 x M25 for 9 - 17mm O.D.
Light source:	LED (Green)	Mounting:	Rigid
Dimensions:	18 x 14 x 12 cm	Input voltage:	100-240 Vac / 12-24 Vdc
Weight:	3,2 kg	Consumption:	10 Watt/peak
IP-index:	IP67		

Order codes

Q10RI03	Q-Perimeter Light Rigid
---------	-------------------------

Q-Flushmount Light

Inset lights, spaced at intervals of not more than 3 m, should be fitted around the perimeter of the landing area of the helideck. For any helideck where the D-value is greater than 16 m, the perimeter lights should not exceed a height of 25 cm above the surface of the helideck.



Technical specifications

Enclosure:	Aluminum, powder coated	Cable Glands:	2 x M20 for 7 - 13mm O.D.
Light source:	LED	Mounting:	Flushmount
Dimensions:	20 x 20 x 8,5 cm	Input voltage:	100-240 Vac / 12-24 Vdc
Weight:	3,2 kg	Consumption:	5 Watt/peak
IP-index:	IP68		

Order codes

Q10FM03	Q-Perimeter Flushlight	Q22FM03	Q-Approach Flushlight
---------	------------------------	---------	-----------------------

Q-Low Intensity Obstruction Light

On fixed obstacles, low intensity lights should be steady red and omnidirectional. Q-Aviation offers a wide range of Low Intensity Obstruction Lights. All lights are in compliance with FAA, ICAO and CAA regulation.



Technical specifications

Enclosure:	Aluminum, powder coated	Cable Glands:	2 x M25 for 9 - 17mm O.D.
Light source:	LED (Red)	Mounting:	Rigid
Dimensions:	18 x 14 x 12 cm	Input voltage:	100-240 Vac / 12-24 Vdc
Weight:	3,2 kg	Consumption:	10 Watt/peak
IP-index:	IP67		

Order codes

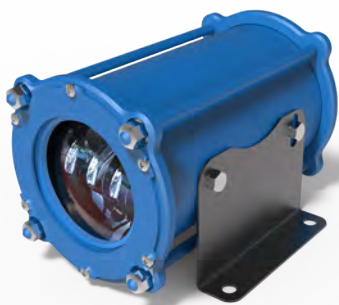
Q80RI03	Q-10cd Obstruction Light	Q81RI03	Q-32cd Obstruction Light
Q82RI03	Q-Double Obstruction Light	Q83RI03	Q-200cd Obstruction Light



Q23IL91 Q-Wind Direction Indicator
[@page 8](#)

Q-Floodlight

The floodlighting should be arranged so as not to dazzle the pilot and, if elevated and located off the landing area clear of the LOS, the system should not present an obstacle to helicopters landing and taking off from the helideck. All floodlights should be capable of being switched on and off at the pilot's request.



Technical specifications

Enclosure:	Aluminum, powder coated	Cable:	H07RN-F 3x2,5 (1,5m)
Light source:	LED (6000K White)	Mounting:	Rigid
Dimensions:	38 x 18 x 16 cm	Input voltage:	100-240 Vac / 12-24 Vdc
Weight:	3,7 kg	Consumption:	35 Watt/peak
IP-index:	IP67		

Order codes

Q12RI03	Q-Floodlight Rigid	Q12RI01	Q-EX Floodlight Rigid
---------	--------------------	---------	-----------------------

Q-Status Light System

A visual warning system should be installed if a condition can exist on an installation which may be hazardous for the helicopter or its occupants. The system (Status Light) is a flashing red light, visible to the pilot from any direction of approach and on any landing heading.



Technical specifications

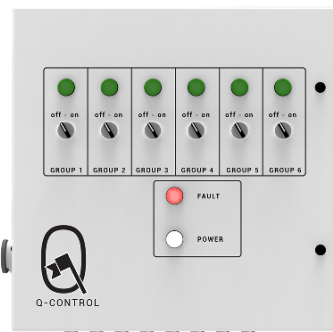
Enclosure:	Aluminum, powder coated	Cable Glands:	M25
Light source:	LED (Red)	Mounting:	Rigid
Dimensions:	18 x 14 x 12 cm	Input voltage:	100-240 Vac
Weight:	3,2 kg	Consumption:	100 Watt/peak
IP-index:	IP67		

Order codes

Q14RI03	Q-Status Light System	Q14RI01	Q-EX Status Light system
---------	-----------------------	---------	--------------------------

Q-Control

The Q-Control has six switches that can be manually switched on and off. In addition to these switches, the Q-Control has a factory standard built-in interface that allows remote control. Using remote control offers the Q-Control to switch on several groups by a radio controller or any desired interface.



Technical specifications

Enclosure:	Steel, powder coated	Cable Glands:	M20 for 7 - 13mm O.D.
IP-index:	IP66	Mounting:	Wallmount
Dimensions:	65 x 65 x 22 cm	Input voltage:	100-240 Vac / 380 Vac
Weight:	20,8 kg		

Order codes

Q31WM03	Q-Control Wallmount	Q31WM01	Q-EX Wallmount
---------	---------------------	---------	----------------



Q10RI03 Q-Perimeter Light
@page 4



Q-Windsock Assembly L-807 Internally Lighted

The operation of the wind cone is entirely dependent on the direction and relative velocity of the surface wind. Movement of the wind through the open throat of the cage and into the sock causes the tail to inflate. The tail of the inflated sock indicates true wind direction for velocities as low as three knots through a 360° circle about the vertical shaft.

Technical specifications

Enclosure:	Aluminum / SS316	Cable Glands:	M20 for 7 - 13mm O.D.
Light source:	LED (6000K White)	Mounting:	Tilttable, Rigid
Diameter:	Ø100 mm	Input voltage:	100-240 Vac / 12-24 Vdc
Weight:	25 - 60 kg	Consumption:	35 Watt
IP-index:	IP65		

Order codes

Q23IL90	Q-Internal Lighted ALU	Q23IL91	Q-Internal Lighted SS316
Q23IL93	Q-Internal Lighted L-806	Q23IL95	Q-Internal Lighted L-807



Windsock Red/White

The high quality windsocks are made of 210 g/m² high quality nylon, PU coated, water repellent and double stitched.

Technical specifications

Material:	Nylon, PU Coated	Weight:	1,2 - 3 kg
Ambient temp.:	-55°C / +55°C	Windspeed:	< 75 knots (140 km/h)
Dimensions:	Size table	Stitching:	Reinforced double stitched
Packaging:	Carton box	Thickness	210 g/m ²

Order codes

RW1021	Ø30x120cm ICAO	RW1024	Ø60x240cm ICAO
RW1022	Ø45x250cm FAA Size 1	RW1025	Ø90x366cm ICAO
RW1023	Ø50x150cm ICAO	RW1026	Ø90x375cm FAA Size 2



Windsock Orange

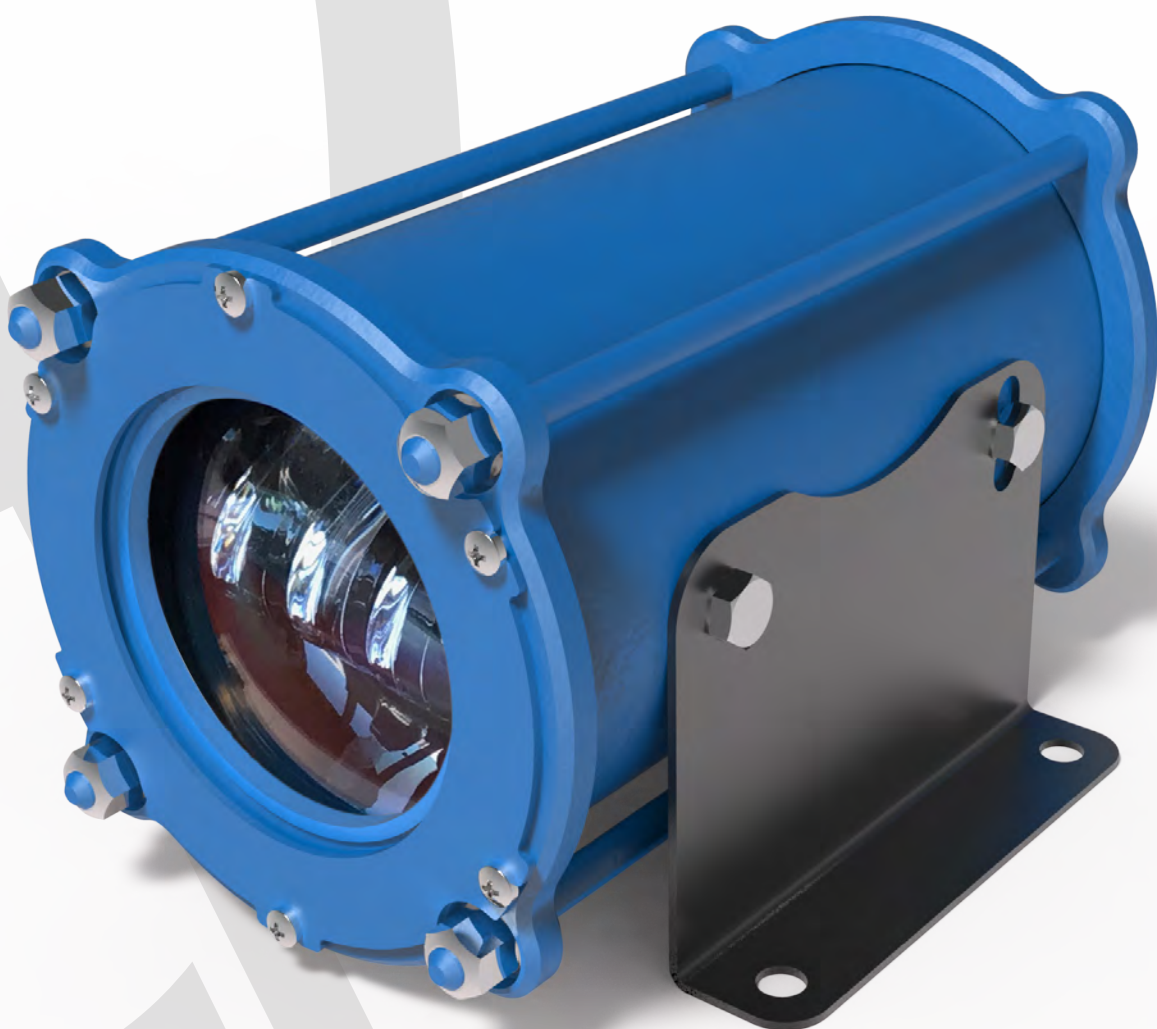
The high quality windsocks are made of 210 g/m² high quality nylon, PU coated, water repellent and double stitched.

Technical specifications

Material:	Nylon, PU Coated	Weight:	1,2 - 3 kg
Ambient temp.:	-55°C / +55°C	Windspeed:	< 75 knots (140 km/h)
Dimensions:	Size table	Stitching:	Reinforced double stitched
Packaging:	Carton box	Thickness	210 g/m ²

Order codes

OR1021	Ø30x120cm ICAO	OR1024	Ø60x240cm ICAO
OR1022	Ø45x250cm FAA Size 1	OR1025	Ø90x366cm ICAO
OR1023	Ø50x150cm ICAO	OR1026	Ø90x375cm FAA Size 2



Q12RI03 Q-Floodlight
@page 6

Q-HAPI

The Q-HAPI System provides the necessary visual information to place the helicopter on the ideal approach slope path. The Q-HAPI is a lighting unit that emits four distinct types of light; Flashing Green Light, Fixed Green Light, Fixed Red Light and Flashing Red Light.



Technical specifications

Enclosure:	Aluminum, powder coated	Cable Glands:	M20 for 7 - 13mm O.D.
Light source:	LED (Green & Red)	Mounting:	Rigid
Dimensions:	112 x 46 x 70 cm	Input voltage:	100-240 Vac / 12-24 Vdc
Weight:	23,6 kg	Consumption:	100 Watt
IP-index:	IP65		

Order codes

Q72RI03	Q-HAPI Rigid
---------	--------------

Q-TD/PM Circle and "H" Lighting System

The lit TD/PM Circle is superimposed on the yellow painted marking. It comprises a concentric circle of at least 16 discrete lighting segments. The elements have a width of 100 mm. A single circle is positioned at the mean radius of the painted circle of the Helideck. The lighting segments provide coverage between 50% and 75% as stated in CAP437.



Technical specifications

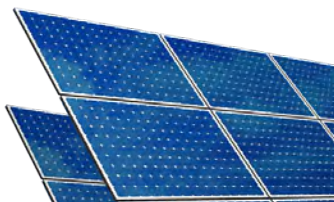
Enclosure:	Aluminum, powder coated	Cable Glands:	From Controller
Light source:	LED (Yellow & Green)	Mounting:	Rigid, Deckmount
Dimensions:	125 x 12 x 2,5 cm	Input voltage:	100-240 Vac
IP-index:	IP67	Consumption:	350 Watt/peak

Order codes

Q64RI03	Q-TDPM D-Value 12-24
---------	----------------------

Q-Solar System

Depending on the amount of lighting units that is requested, the capacity of the Q-Solar Module is selected. Having one central battery unit makes the system completely operational from one location.



Technical specifications

Enclosure:	SS316, Brackets	Cable Glands:	M20 for 7 - 13mm O.D.
IP-index:	IP66	Mounting:	Rigid
Dimensions:	65 x 65 x 22 cm	Output voltage:	12 - 24 Vac

Order codes

Q16PT03	Q-Solar System
---------	----------------



Q14RI03 Q-Status Light System
@page 6

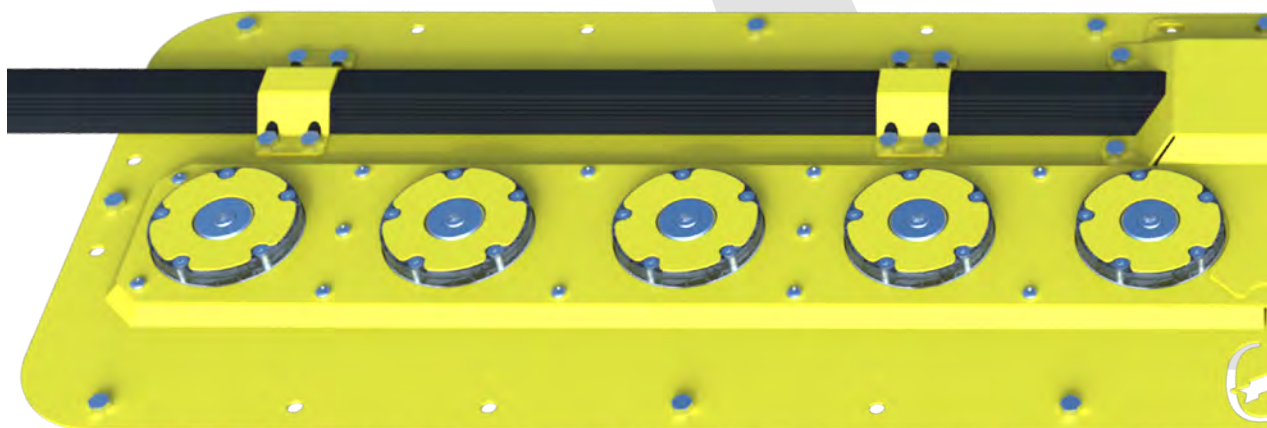
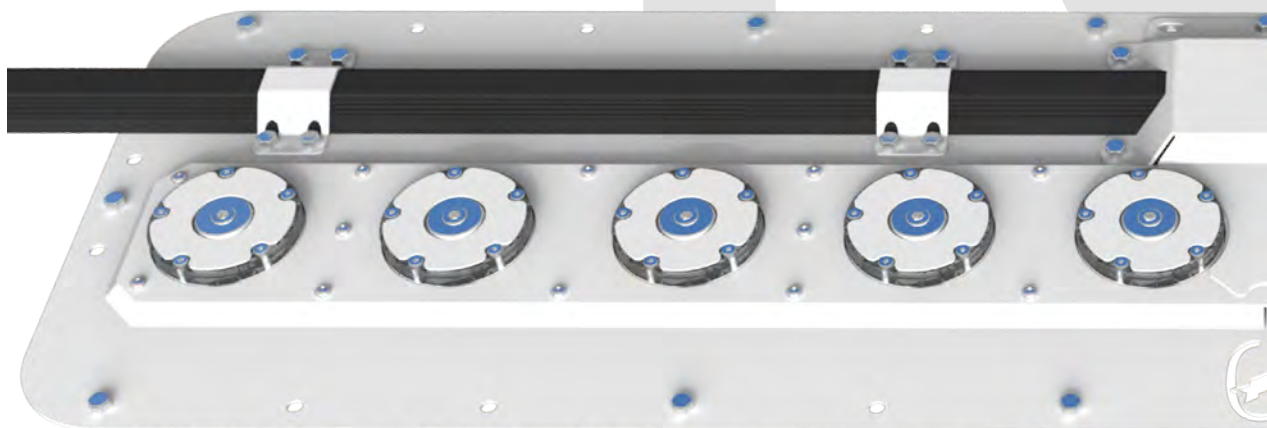
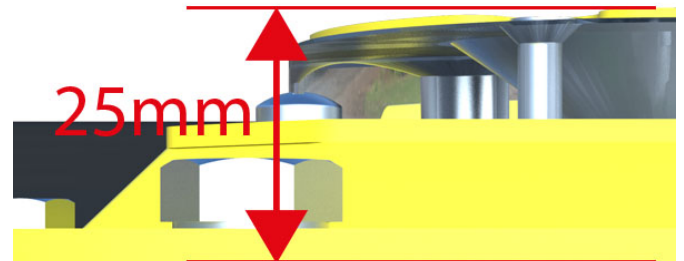
Q-TD/PM Circle and “H” Lighting System

The lit TD/PM Circle is superimposed on the yellow painted marking. It comprises a concentric circle of at least 16 discrete lighting segments. The elements have a width of 100 mm. A single circle is positioned at the mean radius of the painted circle of the Helideck. The lighting segments provide coverage between 50% and 75% of the circumference, as stated in CAP437 and are equidistantly placed with the gaps between them not less than 0,5 m. The mechanical housing is powder-grip-coated yellow.

SUPER LOW - Based on the CAP437 regulation the industry standard height is a maximum of 25 millimeters. The height of the Q-TD/PM units is only 25 millimeters.

SIDE EMITTING LED TECHNOLOGY - The core of the Q-TD/PM are the LEDs. The LEDs are designed with special side-emitting technology in accordance to CAP437 and have a high lifetime of 75.000 hours.

The side emitting LEDs will provide an optimal beam in the lower angles in azimuth, in such a way that the Q-TD/PM is visible from every gliding slope on the approach path.



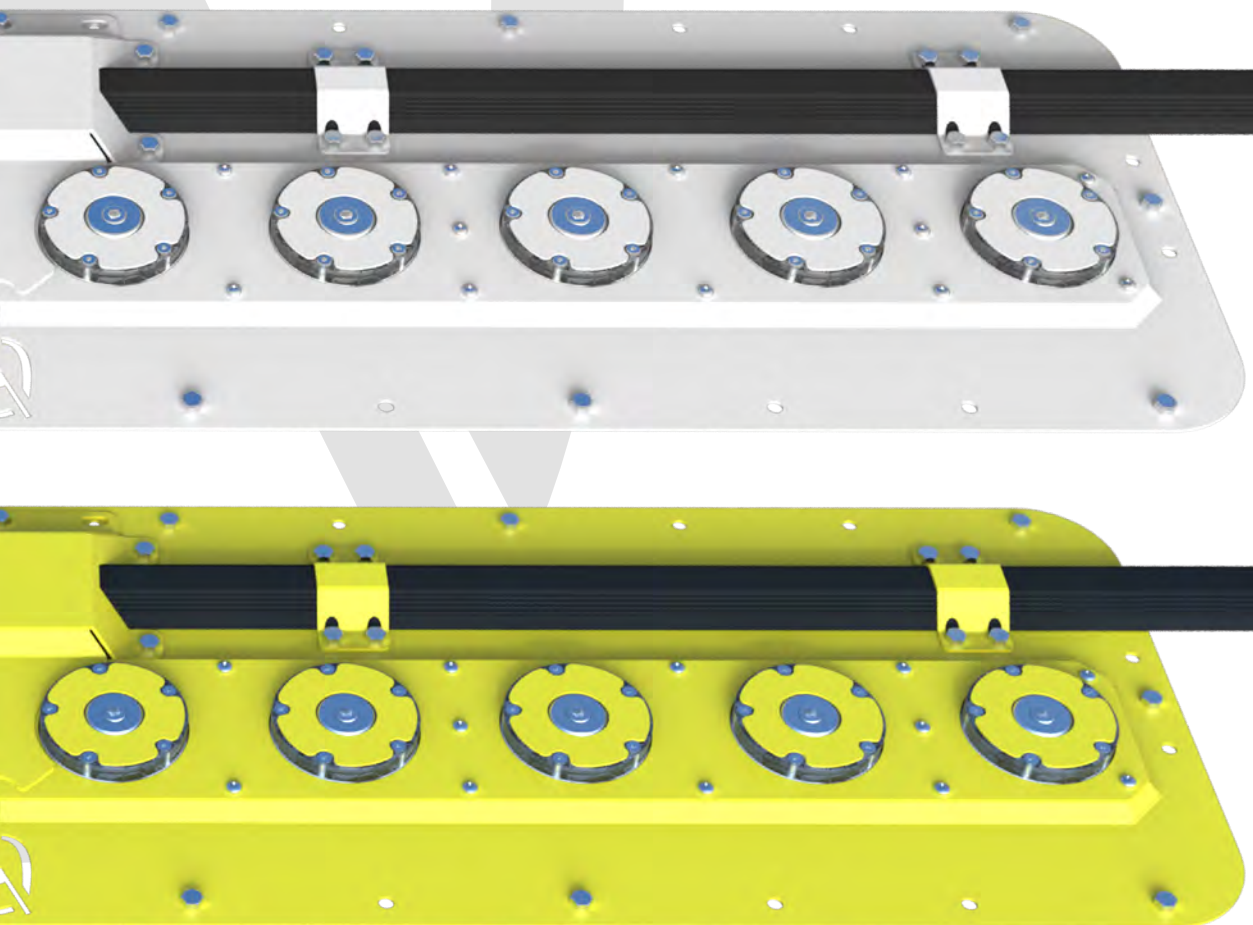
IP67

INDUSTRY STANDARDS - All Q-TD/PM units comply to the applicable regulations such as CAP437. The IP-index of the units is IP67.

MULTIPLE BOLTING POSITIONS - The Q-TD/PM system is equipped with easy to mount plates. One of the key features of the Q-TD/PM system is an efficient installation time.

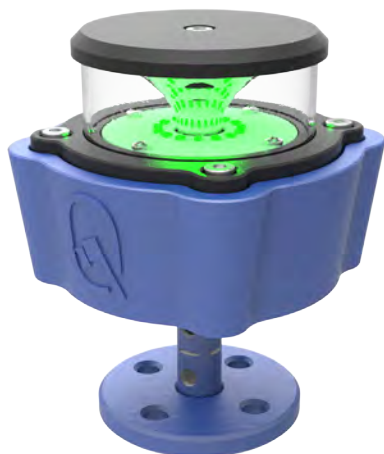
GRIP POWDER COATED - Protecting the mechanical parts of the Q-TD/PM from natural influences to increase durability is a big priority. All the Circle units are yellow powder coated and the letter H units are white powder coated.

The upper surfaces of the units are also covered with a patented grip powder coat to avoid slippery surfaces..



Q-Perimeter Light Frangible

The Q-Perimeter Light is the 50 cd perimeter light for all heliports. In compliance with ICAO annex 14, volume 2, FAA FATO and TLOF Lights. The Q-Perimeter lights are available in several configurations such as frangible , rigid and pole mounted.



Technical specifications

Enclosure:	Aluminum, powder coated	Cable Glands:	2 x M25 for 9 - 17mm O.D.
Light source:	LED (Green)	Mounting:	Frangible
Dimensions:	18 x 14 x 22 cm	Input voltage:	100-240 Vac / 12-24 Vdc
Weight:	3,4 kg	Consumption:	10 Watt/peak
IP-index:	IP67		

Order codes

Q10FR03	Q-Perimeter Light Frangible
---------	-----------------------------

Q-Flushmount Light

Inset lights, spaced at intervals of not more than 3 m, should be fitted around the perimeter of the landing area of the heliport.



Technical specifications

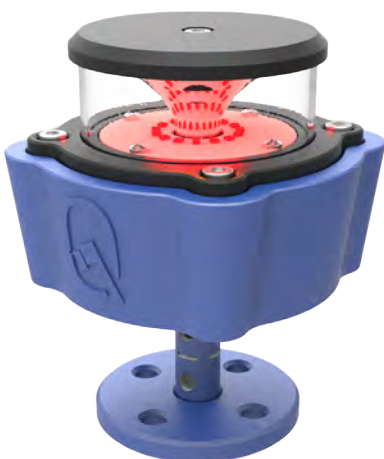
Enclosure:	Aluminum, powder coated	Cable Glands:	2 x M20 for 7 - 13mm O.D.
Light source:	LED	Mounting:	Flushmount
Dimensions:	20 x 20 x 8,5 cm	Input voltage:	100-240 Vac / 12-24 Vdc
Weight:	3,2 kg	Consumption:	10 Watt/peak
IP-index:	IP68		

Order codes

Q10FM03	Q-Perimeter Flushlight	Q15FM03	Q-Taxi Flushlight
Q22FM03	Q-Approach Flushlight		

Q-Low Intensity Obstruction Light

On fixed obstacles, low intensity lights should be steady red and omnidirectional. Q-Aviation offers a wide range of Low Intensity Obstruction Lights. All lights are in compliance with FAA, ICAO and CAA regulation.

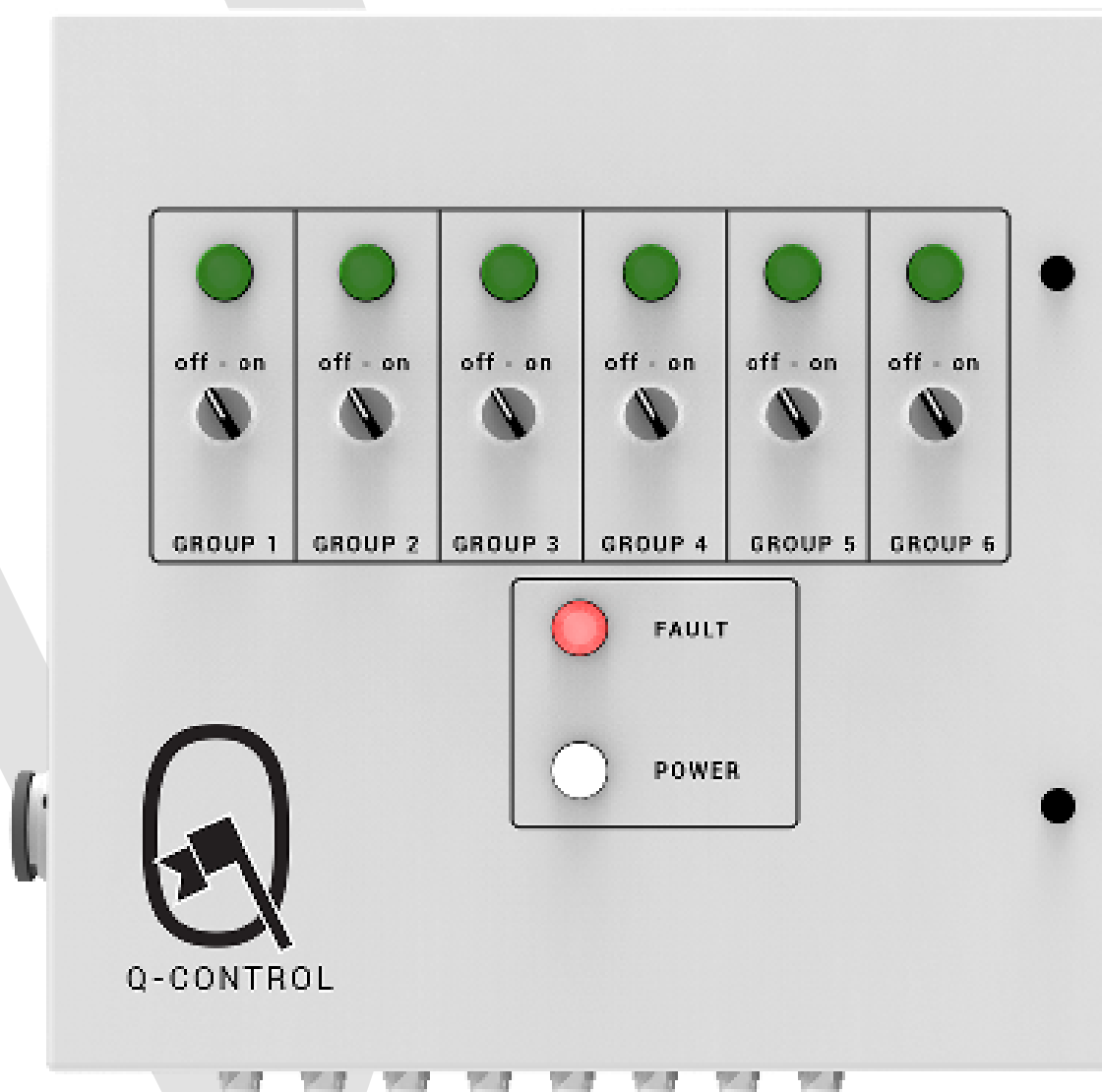


Technical specifications

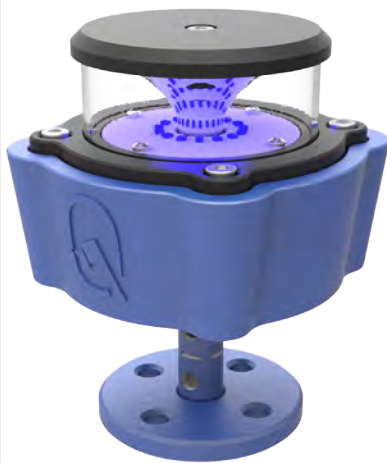
Enclosure:	Aluminum, powder coated	Cable Glands:	2 x M25 for 9 - 17mm O.D.
Light source:	LED (Red)	Mounting:	Rigid
Dimensions:	18 x 14 x 22 cm	Input voltage:	100-240 Vac / 12-24 Vdc
Weight:	3,4 kg	Consumption:	10 Watt/peak
IP-index:	IP67		

Order codes

Q80FR03	Q-10cd Obstruction Light	Q81FR03	Q-32cd Obstruction Light
Q82FR03	Q-Double Obstruction Light	Q83FR03	Q-200cd Obstruction Light



Q31WM03 Q-Control
@page 6



Q-Taxi Light

The Q-Taxi light is the taxi light for all heliports and is in compliance with ICAO annex 14, volume 2. The Q-Taxi Light is available in several configurations such as 230 Vac or 12/24 Vdc.

Technical specifications

Enclosure:	Aluminum, powder coated	Cable Glands:	2 x M25 for 9 - 17mm O.D.
Light source:	LED (Blue)	Mounting:	Frangible
Dimensions:	18 x 14 x 22 cm	Input voltage:	100-240 Vac / 12-24 Vdc
Weight:	3,4 kg	Consumption:	10 Watt/peak
IP-index:	IP67		

Order codes

Q15FR03	Q-Taxi Light Frangible
---------	------------------------

Q-Beacon Light System

The heliport beacon shall be located on or adjacent to the heliport preferably at elevated position and so that it does not dazzle a pilot at short range. The heliport beacon is emitting repeated series of equispaced short duration white flashes in the format of the morse letter 'H'.



Technical specifications

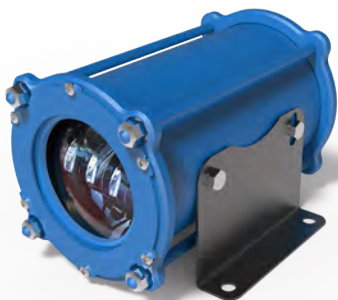
Enclosure:	Aluminum, powder coated	Cable Glands:	M25
Light source:	LED (6000K White)	Mounting:	Rigid
Dimensions:	18 x 14 x 12 cm	Input voltage:	100-240 Vac
Weight:	3,2 kg	Consumption:	100 Watt/peak
IP-index:	IP67		

Order codes

Q13RI03	Q-Beacon Light System
---------	-----------------------

Q-Floodlight Frangible

The floodlighting should be arranged so as not to dazzle the pilot and, if elevated and located off the landing area clear of the LOS, the system should not present an obstacle to helicopters landing and taking off from the heliport. All floodlights should be capable of being switched on and off at the pilot's request.



Technical specifications

Enclosure:	Aluminum, powder coated	Cable:	H07RN-F 3x2,5 (1,5m)
Light source:	LED (6000K White)	Mounting:	Frangible
Dimensions:	38 x 18 x 16 cm	Input voltage:	100-240 Vac / 12-24 Vdc
Weight:	3,7 kg	Consumption:	35 Watt/peak
IP-index:	IP67		

Order codes

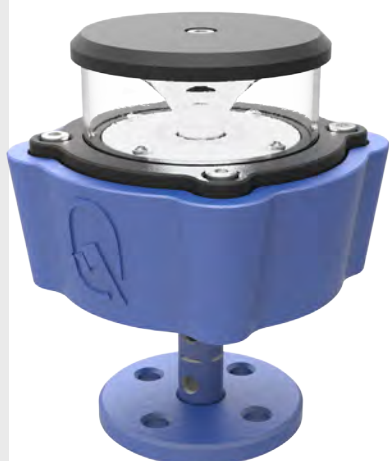
Q12RI03	Q-Floodlight Frangible
---------	------------------------



Q74RI03 Q-APAPI
@page 18

Q-Approach Light Frangible

An approach lighting system should be provided at a heliport where it is desirable and practicable to indicate a preferred approach direction. The approach lighting system shall be located in a straight line along the preferred direction of the approach. The steady lights are omnidirectional white LED lights.



Technical specifications

Enclosure:	Aluminum, powder coated	Cable Glands:	2 x M25 for 9 - 17mm O.D.
Light source:	LED (White 6000K)	Mounting:	Frangible
Dimensions:	18 x 14 x 22 cm	Input voltage:	100-240 Vac / 12-24 Vdc
Weight:	3,4 kg	Consumption:	10 Watt/peak
IP-index:	IP67		

Order codes

Q22FR03	Q-Approach Light Frangible
---------	----------------------------

Q-CHAPI

For compliance with FAA L-881 and L-880 AC150/5345-28D the units of the system are equipped with a tilt switch device.



Technical specifications

Enclosure:	Aluminum, powder coated	Cable Glands:	M20 for 7 - 13mm O.D.
Light source:	LED	Mounting:	Rigid
Dimensions:	112 x 46 x 70 cm	Input voltage:	100-240 Vac
Weight:	23,6 kg	Consumption:	200 Watt/peak
IP-index:	IP65		

Order codes

Q76RI03	Q-CHAPI
---------	---------

Q-APAPI

For compliance with FAA L-881 and L-880 AC150/5345-28D the units of the system are equipped with a tilt switch device. One unit is the master and the three others are slave. This device allows the APAPI system to be disabled as soon as one of the four units has been adjusted.

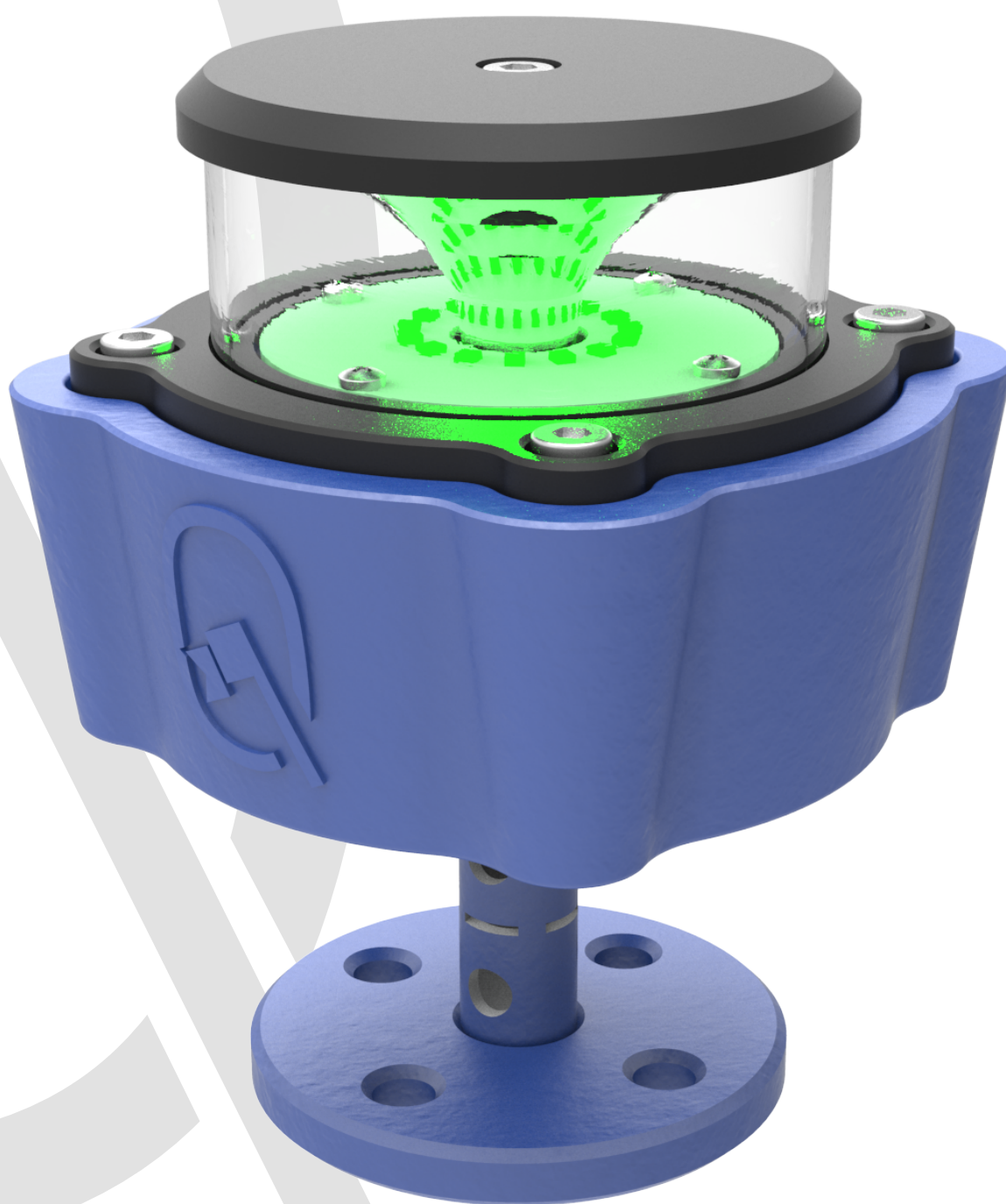


Technical specifications

Enclosure:	Aluminum, powder coated	Cable Glands:	M20 for 7 - 13mm O.D.
Light source:	LED	Mounting:	Rigid
Dimensions:	112 x 46 x 70 cm	Input voltage:	100-240 Vac
Weight:	23,6 kg	Consumption:	200 Watt/peak
IP-index:	IP65		

Order codes

Q74RI03	Q-APAPI
---------	---------



Q10FR03 Q-Perimeter Light Frangible
[@page 14](#)

Q-Windsock Assembly L-807 Unlighted

The operation of the wind cone is entirely dependent on the direction and relative velocity of the surface wind. Movement of the wind through the open throat of the cage and into the sock causes the tail to inflate. The tail of the inflated sock indicates true wind direction for velocities as low as three knots through a 360° circle about the vertical shaft.

Technical specifications

Enclosure:	Aluminum / SS316	Cable Glands:	M20 for 7 - 13mm O.D.
Light source:	Unlighted	Mounting:	Tiltable, Rigid
Diameter:	Ø100 mm	Input voltage:	100-240 Vac / 12-24 Vdc
Weight:	20 - 32 kg	Consumption:	N/A
IP-index:	N/A		

Order codes

Q23UL94	Q-Unlighted L-807 Orange	Q23UL95	Q-Unlighted L-807 Red/White
---------	--------------------------	---------	-----------------------------

Q-Windsock Assembly Internally Lighted

The operation of the wind cone is entirely dependent on the direction and relative velocity of the surface wind. Movement of the wind through the open throat of the cage and into the sock causes the tail to inflate. The tail of the inflated sock indicates true wind direction for velocities as low as three knots through a 360° circle about the vertical shaft.

Technical specifications

Enclosure:	Aluminum / SS316	Cable Glands:	M20 for 7 - 13mm O.D.
Light source:	LED (6000K White)	Mounting:	Tiltable, Rigid
Diameter:	Ø100mm	Input voltage:	100-240 Vac / 12-24 Vdc
Weight:	25 - 60 kg	Consumption:	30 Watt
IP-index:	IP65		

Order codes

Q23IL90	Q-Internal Lighted ALU	Q23IL91	Q-Internal Lighted SS316
Q23IL93	Q-Internal Lighted L-806	Q23IL95	Q-Internal Lighted L-807

Q-Windsock Solar Internally Lighted

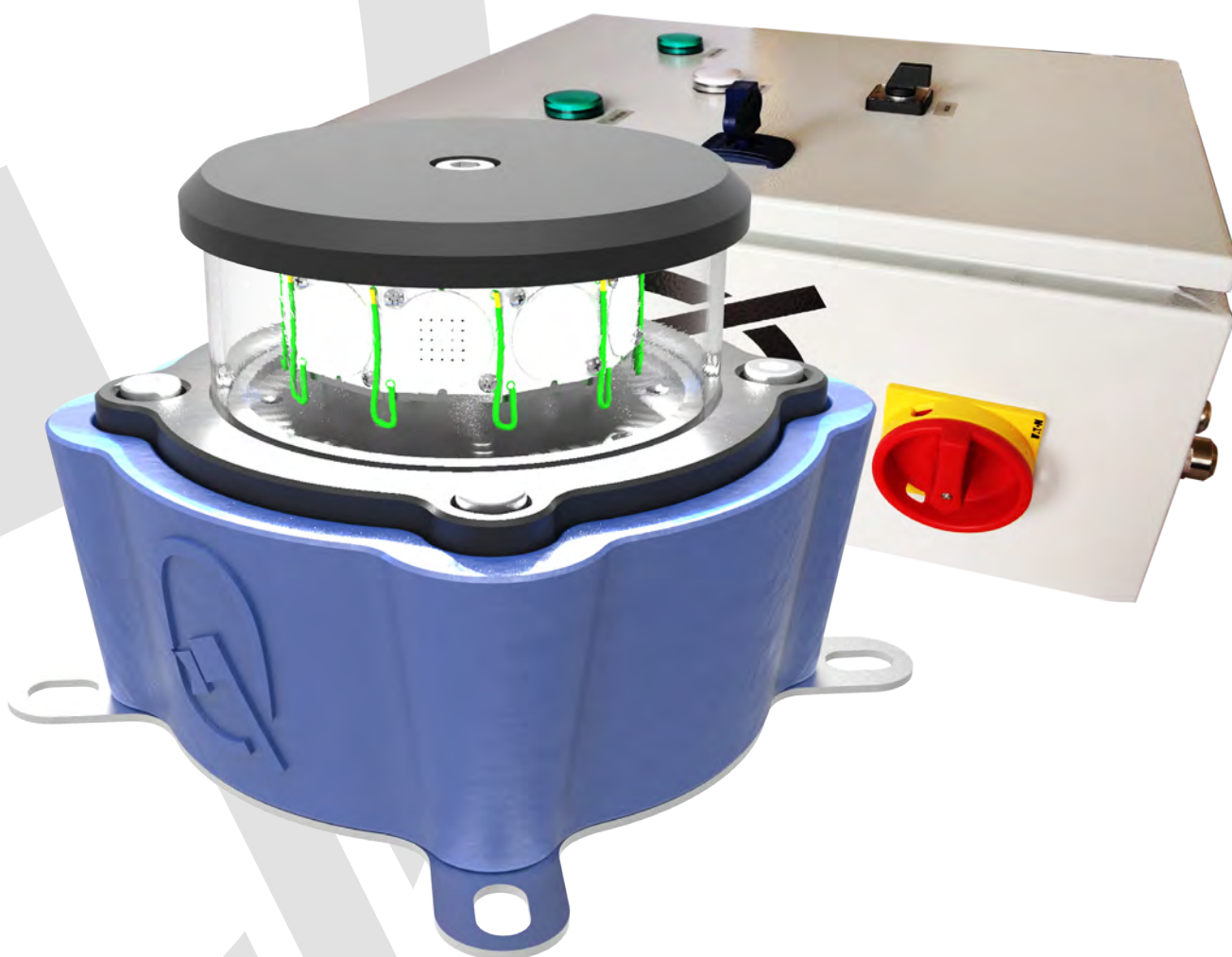
The operation of the wind cone is entirely dependent on the direction and relative velocity of the surface wind. Movement of the wind through the open throat of the cage and into the sock causes the tail to inflate. The tail of the inflated sock indicates true wind direction for velocities as low as three knots through a 360° circle about the vertical shaft.

Technical specifications

Enclosure:	Aluminum / SS316	Cable Glands:	M20 for 7 - 13mm O.D.
Light source:	LED (6000K White)	Mounting:	Tiltable, Rigid
Diameter:	Ø100mm	Input voltage:	100-240 Vac / 12-24 Vdc
Weight:	25 - 60 kg	Consumption:	30 Watt
IP-index:	IP65		

Order codes

Q23IL97	Q-Internal Lighted ALU	Q23IL98	Q-Internal Lighted SS316
---------	------------------------	---------	--------------------------



Q13RI03 Q-Beacon Light System
@page 16



Windsock Red/White

The high quality windsocks are made of 210 g/m² high quality nylon, PU coated, water repellent and double stitched.

Technical specifications

Material:	Nylon, PU coated	Weight:	1,2 - 3 kg
Ambient temp.:	-55°C / +55°C	Windspeed:	< 75 knots (140 km/h)
Dimensions:	Size table	Stitching:	Reinforced double stitched
Packaging:	Carton box	Thickness	210 g/m ²

Order codes

RW1021	Ø30x120cm ICAO	RW1024	Ø60x240cm ICAO
RW1022	Ø45x250cm FAA Size 1	RW1025	Ø90x366cm ICAO
RW1023	Ø50x150cm ICAO	RW1026	Ø90x375cm FAA Size 2



Windsock Orange

The high quality windsocks are made of 210 g/m² high quality nylon, PU coated, water repellent and double stitched.

Technical specifications

Material:	Nylon, PU coated	Weight:	1,2 - 3 kg
Ambient temp.:	-55°C / +55°C	Windspeed:	< 75 knots (140 km/h)
Dimensions:	Size table	Stitching:	Reinforced double stitched
Packaging:	Carton box	Thickness	210 g/m ²

Order codes

OR1021	Ø30x120cm ICAO	OR1024	Ø60x240cm ICAO
OR1022	Ø45x250cm FAA Size 1	OR1025	Ø90x366cm ICAO
OR1023	Ø50x150cm ICAO	OR1026	Ø90x375cm FAA Size 2



Windsock Orange/White

The high quality windsocks are made of 210 g/m² high quality nylon, PU coated, water repellent and double stitched.

Technical specifications

Material:	Nylon, PU coated	Weight:	1,2 - 3 kg
Ambient temp.:	-55°C / +55°C	Windspeed:	< 75 knots (140 km/h)
Dimensions:	Size table	Stitching:	Reinforced double stitched
Packaging:	Carton box	Thickness	210 g/m ²

Order codes

OW1021	Ø30x120cm ICAO	OW1024	Ø60x240cm ICAO
OW1022	Ø45x250cm FAA Size 1	OW1025	Ø90x366cm ICAO
OW1023	Ø50x150cm ICAO	OW1026	Ø90x375cm FAA Size 2



Q231L95 Q-WDI L-807 Internally Lighted
[@page 20](#)



Contact

Q-Aviation B.V.

Spoorstraat 11
4431NK 's-Gravenpolder
The Netherlands

Tel: +31 20 8934111
Email: info@q-avi.com
Skype: q-aviation-b.v