



BAILEY PRODUCTS



A Marmon/Berkshire Hathaway Company

Liverpool Street, Digbeth, Birmingham, UK B9 4DS

Tel: **+44(0)121 380 8000**

Fax: **+44(0)121 380 8020**

Email: **sales@bailey-products.com**

Website: **www.bailey-products.com**

Whilst every effort has been made to ensure the accuracy of all information contained in this catalogue, the company will not accept responsibility for any claims arising from errors or omissions.

In the interests of technical improvement and/or customer service, the company reserves the right to introduce modification to any of the products illustrated or described in the catalogue.

Bailey products are protected by British and International patents, patent applications, design registrations and copyright.

All goods supplied by Bailey Products are supplied subject to Conditions of Sale, copies of which are available on request.



FS 558329



BAILEY PRODUCTS



Drain & Chimney Cleaning Rods
The World Renowned Bailey Blue Rod®

Drain Testing/Stopping Plugs & Equipment
Quality, durability & strength

Duct Rods & Fittings for Cabling
Bailey duct rods made to BT specifications

Liverpool Street, Digbeth, Birmingham UK B9 4DS





Welcome to Bailey Products

Bailey has been producing quality products since the 1940's, originally as Bailey Brothers, and from 2001 as Bailey Products, a division of Marmon, who in turn are part of BERKSHIRE HATHAWAY Inc.

Within this catalogue you will find an extensive range of drain cleaning rods and tools, along with drain stopping and testing equipment. Also cabling duct rods and accessories produced to British Telecom specifications.

Bailey "Blue"™ rods are covered by international trademarks and are renowned worldwide for quality and durability. Our products are used by a diverse customer base in many countries around the globe.

Manufacturing is carried out within recognised standard ISO 9001 and we continuously strive to improve our products and service. To this end our products are sold through a global distribution network.

We hope you will find what you require within this catalogue, but please do not hesitate to contact our dedicated sales team (details below) for your local distributor.



Bailey Products, Liverpool Street, Digbeth, Birmingham, UK B9 4DS

Tel: +44 (0)121 380 8000

Fax: +44 (0)121 380 8020

Email: sales@bailey-products.com

Website: www.bailey-products.com

Orders maybe subject to a minimum charge and a carriage charge.



A Marmon/Berkshire Hathaway Company



FS 558329

Product Overview



Drain & Chimney Cleaning Rods

pages 4 & 5

Typical applications:

$\frac{3}{4}$ " diameter rods are for general purpose use, small diameter drains, flues and septic tanks.
 $\frac{7}{8}$ " diameter rods are for larger diameter drains, flues and septic tanks.
 1" and 1 $\frac{1}{8}$ " diameter rods are for municipal and other heavy duty use.

Blue Rods®: these are manufactured from high grade polypropylene, that provides the proven combination of strength, rigidity, flexibility and reliability. They also provide a degree of protection, against becoming brittle, when used in cold environments. The preferred choice of professionals available in a range of lengths and diameters.

Black rods: to offer customers a choice, 'contract' black polypropylene rods are also available. These are produced to the same standard and use regular grade materials. These are in a limited range of sizes.

Nylon rods: these are ideal where more flexibility is needed, for example flue cleaning for solid fuel stoves.

Joints: two types of joints are available on polypropylene rods.

Universal: rods fitted with this type of joint should only be rotated in a clockwise direction.

Lockfast: rods fitted with this type of joint can be rotated in either direction and will remain secure in the most demanding conditions.

Triggerlock: only for nylon. Can be rotated in either direction. Hand rotation only.

Rod sets are available with a combination of tools, packed as sets (please see page 4 overleaf).

Universal



Lockfast



Triggerlock



Stopping & Testing Equipment

pages 6 to 7

Bailey Products are a leading manufacturer of a wide range of testing/stopping plugs. The quality of our products are widely recognised as being of the highest standard. Plugs are available in 2 forms, centre lock and rim fastening. Centre locks can be produced in steel/aluminium or nylon to suit the application (rim fasts are only available in steel).

Equipment includes: inflatable airbags, drain tracing dyes, low pressure air kits, etc.



Duct Rods & Fittings for Cabling

page 8

Bailey duct rods are made from PVC to British Telecom specifications.

The rods are fitted with a top quality trigger lock (Ferret) coupling that ensures total security of the joint but provides quick release. Fittings are available to suit various applications, please see page 9.



Typical Additional Products

page 9

Various related products can be supplied. These may be subject to minimum quantities.



Pipe Testing & Use Guidelines

page 10-11

Testing should be carried out in compliance with current Building Regulations: this is a brief guide to typical testing procedures.



Rods

Rod Sets, 10 Standard Blue Rod Sets

	Set consists of:	Nominal Dia.	Length	Universal Fitting	Lockfast Fitting
2 tool set in a poly bag	Plunger and worm screw	3/4"	0.9m (3')	Z1470	Z1323
3 tool set in a carry bag	Plunger, scraper and worm screw	3/4"	0.9m (3')	Z5431	Z5503
4 tool set in a poly bag	Plunger, scraper, worm screw and wheel	3/4"	0.9m (3')	Z1471	Z1324
3 tool set in a carrying case	Plunger, scraper and worm screw.	3/4"	0.9m (3')	Z3602	Z3603
Polypropylene carry case	Available as a spare part.			Z2686	

3 Tool Set in a Carry Bag Z5431



3 Tool Set in a Carry Case Z3602



Polypropylene Contract Rods

Sold in 10s	Nominal Dia.	Length	Universal Fitting	Lockfast Fitting
Black	3/4"	3'	Z1551	Z1693

Blue Polypropylene Rods

Sold in 10s	Nominal Dia.	Length	Universal Fitting	Lockfast Fitting
Standard rods	3/4"	0.9m (3')	Z1600	Z1604
	3/4"	2m	Z1612	Z1636
Medium duty rods	7/8"	0.9m (3')	Z1601	Z1605
	7/8"	2m	Z1618	Z1642
Heavy duty rods	1"	0.9m (3')	Z1602	Z1606
	1"	2m	Z1624	Z1648
	1 1/8"	0.9m (3')	Z1603	Z1607
	1 1/8"	2m	Z1630	Z1654
Other sizes may be available subject to Qty.				

Flexible Nylon Triggerlock Rod Set

	Nominal Dia.	Length	Universal Fitting	Lockfast Fitting
Propack set*	12mm	1m	-	Z6947
* 10 x trigger lock rods, 1 x 5" brush, 1 x 7" brush, universal and lockfast rod adaptors.				
Triggerlock nylon rod	12mm	1m	-	Z6927



Accessories for Rods



Worm Screw

Pierces blockages such as paper or rags and the obstruction is drawn back to clear the pipe.



Rotating Handle

For use with rod lengths to allow easier rotation of rods.



Plungers, brass cups

Builds up pressure of water which forces the obstruction clear.



Plungers

Builds up pressure of water which forces the obstruction clear.



Drop Scrapers

Glides over small obstructions and drops into vertical scraping position to allow offending material to be dragged back towards the operator.



Boring Tool

Heavy duty tool for breaking up hard deposits.



Clearing Wheel

To assist rods around obstructions.



Wooden Stock Brushes

Drain and sweep's brushes with bristles in wooden stock. Use for brick chimneys and coal burning applications.



Wire/Poly Tube Brushes

Scrapes and brushes ceramic flue pipes, pre-cast sectional chimneys and brick chimneys.



Harpoon

To pierce and extract bulky material.



Retrieving Tool

To retrieve lost rods or tools; coil locates around joint for extraction.

Accessories

Polypropylene carry case	Z2686	
	Universal Fitting	Lockfast Fitting
2" worm screw	Z1749	Z1779
4" worm screw	Z1759	Z1789
4" plunger	Z1751	Z1781
6" plunger	Z1752	Z1782
4" plunger, c/w brass cup & screw	Z3741	Z3742
6" plunger, c/w brass cup & screw	Z1739	Z1898
4" drop scraper	Z1741	Z1771
6" drop scraper	Z1742	Z1772
Rotating handle	Z2872	Z1793
Boring tool	Z1762	Z1792
Harpoon	Z1761	Z1791
Retrieving tool	Z1804	Z1794
Clearing wheel	Z1740	Z1770
Adaptor for wire brushes	Z0070	Z0072

Brush Accessories

	Nominal Dia.	Universal Fitting	Lockfast Fitting
Wood stock Brushes	4"	Z1846	Z1854
	6"	Z1847	Z1855
	8"	Z1848	Z1856
	9"	Z1849	Z1857
	10"	Z1850	Z1858
	12"	Z1851	Z1859
Wire tube brushes	16"	Z1853	Z1861
	4"	Z1864	Z1870
	6"	Z1865	Z1871
	9"	Z1866	Z1872
	12"	Z3613	Z3616
	16"	Z1867	Z1873

Accessories for Nylon Rods

	Nominal Dia.	Universal Fitting	Lockfast Triggerlock Fitting
Poly Brushes	5"	-	Z6929
Poly brushes for flexible nylon rods	7"	-	Z6930
Universal male adaptor for trigger lock rods*	-	Z0093	-
Lockfast male for trigger lock rods*	-	-	Z0090

* Need to be secured with adhesive before use.



Plugs for Stopping & Testing

Centre Locking Plugs							
Nominal Pipe Size Metric/mm	Nominal Pipe Size Imperial"	BSP Outlet Size	Steel Plates Brass Cap P/N	Steel Plates Plastic Cap P/N	Aluminium Plates (Cap see below) P/N	Min./Max. Operating Range mm	Double Seal Steel Plates Brass Cap P/N
Brass Wing Nut					Plastic Cap		
12.5	1/2"	Solid	Z1979	-	-	12.5 - 18	-
20	3/4"	Solid	Z2555	-	-	18.5 - 24	-
25	1"	Solid	Z2556	-	-	22 - 27	-
30	1 1/4"	Solid	Z1978	-	-	26 - 32	-
40	1 1/2"	1/2"	Z2558	Z1964	Z5535	36 - 48	Z2880
50	2"	1/2"	Z2559	Z1962	Z5536	49 - 60	Z2582
65	2 1/2"	1/2"	Z2560	Z1965	Z5537	61 - 75	Z2881
75	3"	1/2"	Z2561	Z1963	Z5538	73 - 85	Z2583
90	3 1/2"	1/2"	Z2562	Z1966	Z5539	85 - 95	Z2882
100	4"	1/2"	Z2416	Z1960	Z5540	94 - 110	Z2584
115	4 1/2"	1/2"	Z1467	Z1977	Z5541	110 - 120	Z3649
125	5"	1/2"	Z2563	Z1975	Z5542	121 - 138	Z2585
140	5 1/2"	1/2"	Z5131	Z5130	-	138 - 148	Z5132
150	6"	1/2"	Z2417	Z1961	Z5543	146 - 163	Z2586
Steel Wing Nut					Brass Cap		
175	7"	1"	Z2564	-	Z5520	170 - 195	Z2587
200	8"	1"	Z2565	-	Z5521	191 - 211	Z2588
225	9"	1"	Z2420	-	Z5522	216 - 235	Z2589
250	10"	1"	Z2566	-	Z5523	244 - 260	Z2590
275	11"	1"	Z1976	-	Z5524	275 - 305	Z2934
300	12"	1"	Z2567	-	Z5525	296 - 314	Z2591
325	13"	1"	Z2568	-	-	315 - 350	-
350	14"	1"	Z2569	-	Z5526	340 - 375	Z2592
375	15"	1"	Z2570	-	Z5527	365 - 400	Z2593
400	16"	1"	Z2571	-	Z5528	390 - 425	Z2594
425	17"	1"	Z2572	-	-	415 - 440	-
450	18"	1"	Z3193	-	Z5529	440 - 475	-
500	20"	2"	-	-	Z3720	495 - 525	-
525	21"	2"	-	-	Z3721	520 - 555	-
550	22"	2"	-	-	Z5530	534 - 569	-
600	24"	2"	-	-	Z3722	590 - 630	-
675	27"	2"	-	-	Z3723	660 - 690	-
700	28"	2"	-	-	Z3724	680 - 705	-
750	30"	2"	-	-	Z3726	735 - 760	-
800	32"	2"	-	-	Z5532	790 - 825	-
900	36"	2"	-	-	Z5534	890 - 925	-

Nylon Centre Locking Plugs				
Nominal Pipe Size Metric/mm	Nominal Pipe Size Imperial"	BSP Outlet Size	Steel Plates Plastic Cap P/N	Steel Plates Plastic Cap P/N
12.7	1/2"	Solid	Z5702	13-17
19	3/4"	Solid	Z5703	20-26
25.4	1"	Solid	Z5704	25-32
32	1 1/4"	Solid	Z5705	34-43
38	1 1/2"	Solid	Z5706	38-45
38	1 1/2"	1/2"	Z5490	38-45
50	2"	1/2"	Z5491	50-62
65	2 1/2"	1/2"	Z5492	62-70
75	3"	1/2"	Z5493	74-87
100	4"	1/2"	Z5494	97-107
125	5"	1/2"	Z5495	124-137
150	6"	1/2"	Z5496	149-165



Rim Fastening Plugs		
Nominal Pipe Size Metric/mm	P/N	Min./Max. Operating Range mm
450	Z1901	437 - 463
475	Z1902	462 - 488
500	Z1903	487 - 513
525	Z1904	512 - 538
600	Z1905	587 - 613
675	Z1906	662 - 688
700	Z1907	687 - 713
750	Z1908	737 - 763
800	Z1909	787 - 813
850	Z1911	837 - 863
900	Z1912	887 - 913
1000	Z1915	987 - 1013

Operating Pressures Sizes

This is a guide to the maximum back pressure for the different types and sizes of test plugs.

These pressures will vary upon cleanliness and condition of pipe bore and ambient temperature.

1/2" (12.5mm) to (30mm)	30 psi
1 1/2" (40mm) to (300mm)	7 psi
13" (325mm) to (1200mm)	5 psi
Over 40" (1200mm)	3 psi

Stopping & Testing Equipment



Canvas Air Bags			
Inflatable rubber bladder with rubber tubing. Other sizes available on request.			
Size	Max. Inflation P.S.I.	Brass Tap 1/4" P/N	Schrader Valve P/N
2"/50mm	10	Z1720	Z5954
3"/75mm	10	Z1967	Z1193
4"/100mm	10	Z1968	Z1194
5"/125mm	10	Z1721	Z5955
6"/150mm	6	Z1969	Z1195
8"/200mm	6	Z3636	Z1196
9"/225mm	4	Z1970	Z4847
10"/250mm	4	Z1723	Z1197
12"/300mm	3	Z1724	Z1198

Schrader Valve

Brass Tap



Drain Test Kit

P/N

The Bailey® Drain Test Kit has been produced to supply the industry with an "Off the Shelf" solution for the completion of air tests up to 4" water gauge.

Z4074



Inflatable PVC Bags

Nominal Size	For sealing pipes with actual internal diameters in the range	Max. Inflation P.S.I.	Schrader Valve P/N
2"/50mm	but under 3"/75mm	25	Z5507
3"/75mm	but under 4"/100mm	20	Z5646
4"/100mm	but under 6"/150mm	15	Z1587
6"/150mm	but under 8"/200mm	8	Z1588
8"-12"/200-300mm	but under 12.5"/315mm	7	Z5647



Inflator Pump

P/N

Plastic pump to suit Schrader valve. Comes with an adaptor to suit brass taps.

Z5852



Drain Tracing Dyes 200g Jars

Colour	Dilution Rates Litres	P/N	The dyes are soluble in water and are used to locate the direction of water flow in pipes, drains etc. The best way to use the dye is to dissolve the required amount into about five litres of water and then add into the flow or tank. The dilution rates assume that the dye is being added to clean water, dirty water will require a greater concentration.
Fluoresceine	20 - 25,000	Z5170	
Green	15 - 20,000	Z3589	
Red	12 - 15,000	Z3590	
Blue	12 - 14,000	Z1992	
Purple	12 - 14,000	Z3592	
Yellow	10 - 12,000	Z3591	



Smoke Pellets

P/N

For testing flues chimneys and fans. Gives off a white smoke when ignited. 6 pellets per tube.

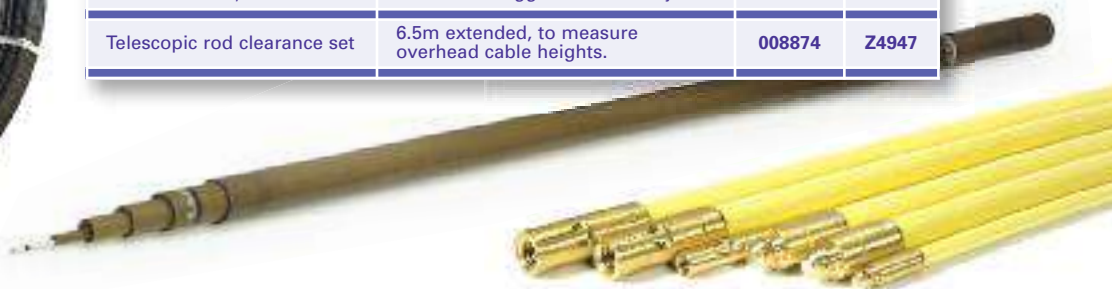
Z3745



Duct Rods & Fittings for Cabling (BT Specifications)



Rods	Description	B.T. Code No.	Bailey P/N
Duct rod No. 1, $\frac{15}{16}$ "x 3m	Fitted with triggerlock (Ferret) joints	126254	Z1700
Duct rod No. 2, $\frac{15}{16}$ "x 2m	Fitted with triggerlock (Ferret) joints	126277	Z1702
Duct rod No. 3,	250m coil of $\frac{15}{16}$ " diameter PVC	126330	Z1500
Duct rod No. 5, $\frac{1}{2}$ "x 2m	Fitted with triggerlock (Ferret) joints	126436	Z1704
Telescopic rod clearance set	6.5m extended, to measure overhead cable heights.	008874	Z4947

Coupling-up Pieces
No.s 1 & 2, Z2087/Z2088Leader or Follower,
Attachment 1A, Z2220Leader or Follower,
Attachment 2A, Z2219Leader or Follower, steel,
Attachment 4A, Z2937Leader or Follower
with spring,
Attachment 3A, Z3276Bellmouth Split 1 & 2,
Z4545/Z4546

Bellmouth Split 1A, Z4547

Adaptor No. 5, Z2288

Adaptor No. 1A, Z2224

Adaptor No. 2A, Z2268

Adaptor No. 3A, Z2225

Adaptor No. 7, Z0036

Fittings	Description	B.T. Rod Code No.	Bailey P/N
Coupling piece No. 1 Lockfast	-	112857	Z2087
Coupling piece No. 2 Lockfast	-	112858	Z2088
Attachment 1A	-	126479	Z2220
Attachment 2A	-	126480	Z2219
Attachment 3A	Leader or follower for duct rod No. 3	126973	Z3276
Attachment 4A	Leader or follower to $\frac{1}{2}$ " Ferret rod	126382	Z2937
Bellmouth Split 1	-	110500	Z4545
Bellmouth Split 2	-	110501	Z4546
Bellmouth Split 1A	-	126514	Z4547
Adaptor 1A	To join Ferret female to duct rod No. 3 male	126484	Z2224
Adaptor 2A	To join Ferret male to duct rod No. 3 female	126540	Z2268
Adaptor 3A	To join Ferret female to duct rod No. 3 female	126485	Z2225
Adaptor 5	To join Lockfast female to Ferret female, including spring	126296	Z2288
Adaptor 7	To join $\frac{15}{16}$ " Ferret male to $\frac{1}{2}$ " Ferret female	110002	Z0036
Rigging head 1A	Can be used for threading cable inside hollow poles, by screwing onto duct rod No. 2 and pushing a rope with a weight attached. This drops down and the rope can then be used to feed cable through.	126687	Z2573
Coupling rod duct No. 3 male	Can be used for joining duct rods No. 3	126393	Z2130
Coupling rod duct No. 3 female	Can be used for joining duct rods No. 3	126394	Z2129
Coupling rod duct No. 3 male swivel	Can be used for joining duct rods No.	126395	Z2131
Coupling rod duct No. 3 reel	Can be used for joining duct rods No. 3	126454	Z2260

Rigging Head 1A, Z2573

Coupling rod duct No. 3,
male, Z2130Coupling rod duct No. 3,
female, Z2129Coupling rod duct No. 3,
male swivel, Z2131Coupling rod duct No. 3,
reel, Z2260

Typical Additional Products

May be subject to minimum quantities.

Continuous Rods Reels, Frame and Fittings

Various diameters and lengths are available.



Steelflex Rods



Flexible Coiled Spring Leading Rod



Coiled Spring Rod



Leading Coiled Spring Rod



Gully Grabs



Twin Port Rim Test Plugs



Plumber's Force Cups



Drain & Sweep's Brushes, Plastic Stock



Pipe & Sink Cleaners



Air Gauges



Crown Root Cutter





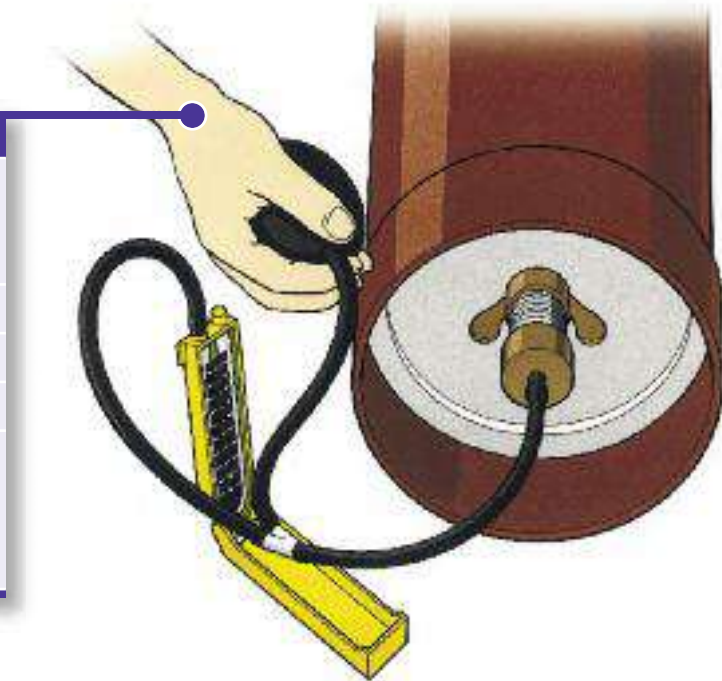
Test Guidelines

Testing should be carried out to current Building Regulations.

⚠ Typical guidelines are shown below.

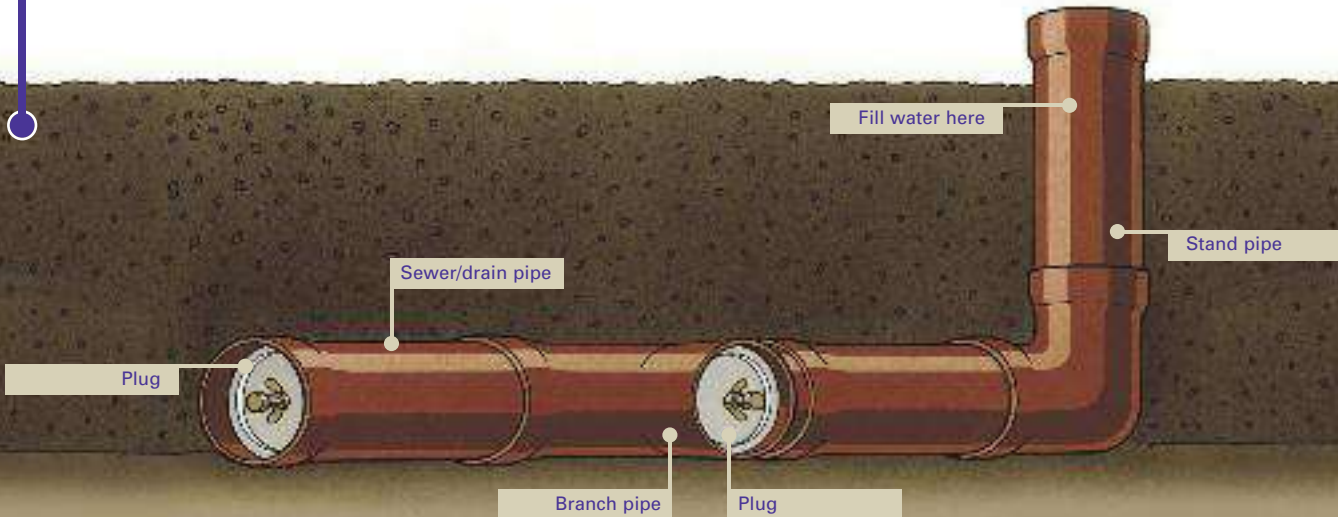
Air Test - Testing Guidelines

1. Seal pipe section with appropriate size drain test plug.
Remove any grease or foreign material from installation point. Ensure no dirt is trapped between seal of plug and plates. Ensure plug is inserted square to pipe wall. Ensure wing nut and sealing cap are tight.
2. Fit test nipple to one of the drain test plugs.
3. Connect rubber hose via 'Y' piece to nipple, 'U' gauge and hand bellows.
4. Fill 'U' gauge with water to 'zero'.
5. Squeeze the hand bellows gently until the level reaches 100mm on the open side of the gauge and the lower limit below zero on the closed side. The level should not fall to less than 75mm during a period of 5 minutes without further pumping, after allowing a suitable time for stabilization of air temperature. If it drops below 75mm within the specified time the pipe section is leaking.



Water Test - Testing Guidelines

1. Fit an expanding plug, suitably braced to resist the full hydrostatic head, at the lower end of the pipeline. Also plug any branches. The pipes may need strutting to prevent movement.
2. Provide a means of applying the test head of water at the top end of the line, preferably using a 90° bend and a straight pipe of the same diameter as the line. Ensure that the standpipe and plug are suitably strutted to resist the applied hydrostatic head. Provide a means of filling the pipeline with water.
3. Fill the system with water keeping pockets of trapped air to a minimum.
4. Fill the standpipe to the requisite level.
5. Leave for at least two hours to enable the pipes to become saturated, topping up as necessary.
6. After the absorption period measure the loss of water from the system by noting the amount needed to maintain the level in the standpipe over a further period of 30 minutes. In carrying out the test to the requirements (please see current Building Regulations), the standpipe should be topped up at regular intervals of 5 minutes and the amounts measured. Seal pipe section with appropriate size drain test plug.



Rodding Procedures

Drain Cleaning

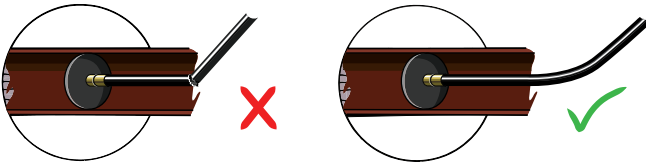
The direction in which the drain runs should be established, usually this is in a straight line. Remove the inspection cover nearest to the house. This may reveal a full gully but the blockage is probably further along the run. Continue to remove the covers until the system looks clear, the blockage will be in the previous section of the run.

Cover the drain outlet of this inspection chamber to avoid another blockage forming when the debris is released. Work from this clear chamber, rodding back up the run towards the house.

To release the debris use the rods and tools ensuring clockwise pressure is maintained on the rods. Remove the rods completely once the blockage is cleared and then flush the system through with water to ensure the flow is clear.

Clearing a blocked drain is not a dangerous job, as long as it is carried out in a sensible way.

Excessive force must not be used at any time and the rods must not be rammed through severe bends.

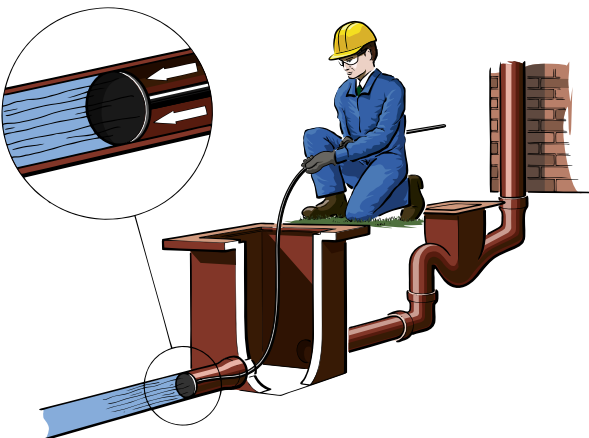


⚠ **Caution** - Layouts of drains will vary. Seek professional advice if in any doubt. Never use excessive force when carrying out any cleaning process.

⚠ **Safety Warning** - Use protective gloves and eyewear. Keep all tools out of the reach of children. *Universal joints*: always activate rods in a clockwise direction. *Lockfast joints*: ensure square peg is fully engaged, and the lockfast nut is tightened, using a spanner.

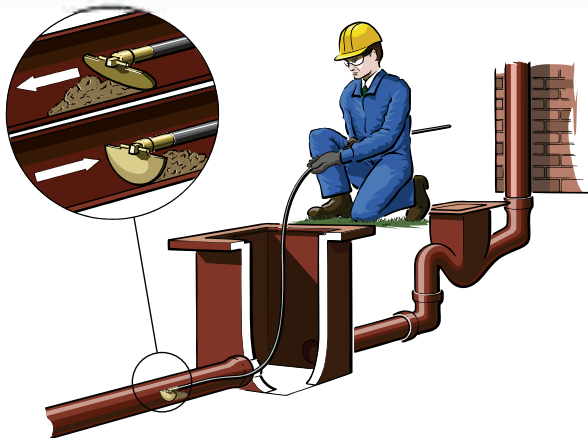
Plunger Drain Usage

Builds up pressure of water which forces obstruction clear.



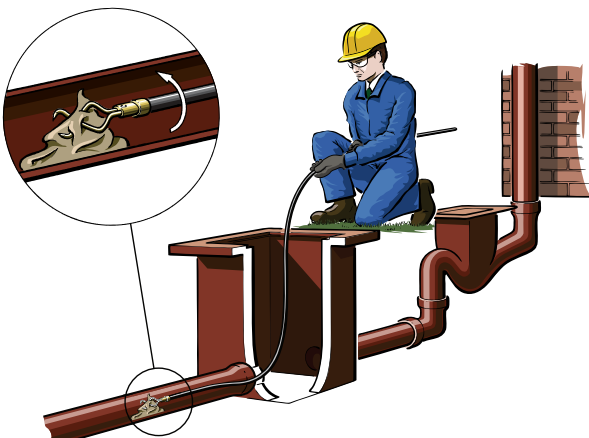
Drop Scraper Drain Usage

Glides over small obstructions and drops into vertical scraping position to allow offending material to be dragged back towards the operator.



Double Worm Screw Drain Usage

Pierces blockages such as paper or rags and the obstruction is drawn back.



Drop Scraper Gutter Cleaning

Glides over small obstructions and drops into vertical scraping position to allow offending material to be dragged back towards the operator.

⚠ **Gutter Cleaning** - Make sure, if ladders are used, they are correctly positioned and are properly secured to prevent any movement whilst carrying out cleaning operations. Start cleaning the gutter from the nearest point to the working position, adding rods to cover the required length.
If in any doubt or difficulty please contact a professional.

