

HEAT
LIGHT
AIR
POWER





HEAT / LIGHT / AIR / POWER

At SA Equip we're experts in handling these four elemental forces. Our technologies allow you to control temperature, airflow and illumination – and to distribute power – safely and efficiently in dangerous, potentially explosive environments.



CONTENTS

- 04 **Company Overview**
- 16 **Global Reach**
- 20 **Product Specification Icon Key**
- 21 **Accreditations**
- 22 **ATEX Markings Explained**
- 24 **Examples of Hazardous Area Zones**
- 26 **Plugs, Sockets & Cables**

HEAT

- 30 **SA FLEXIHEAT**
- 32 **Heater**
- 36 **Pipe Heating Jackets**
- 40 **HeatBox**

LIGHT

- 46 **SA LUMIN**
- 48 **LED Torch**
- 52 **LED Tasklight**
- 56 **LED Tasklight Kit**
- 60 **LED Worklight 100**
- 64 **LED Worklight 200**
- 68 **LED Emergency Worklight**
- 72 **LED Standard Floodlight**
- 76 **LED Compact Floodlight**
- 80 **UV LED Floodlight**
- 84 **Blast Light**

AIR

- 90 **SA CYCLONE**
- 92 **20cm Fan**
- 96 **30cm Fan**
- 100 **40cm Fan**
- 104 **Ducting & Duct Couplers**
- 108 **Venturi Air Mover**

POWER

- 114 **SA POWERNET**
- 116 **Mains Distribution Unit**
- 120 **3.8KVA Transformer**
- 124 **400VA Transformer**
- 128 **Splitter Box**
- 132 **Extension Reel**
- 136 **Extension Lead**

- 140 **Core Product Directory**
- 146 **Notes**
- 148 **Contact Us**



PERFORMANCE IN THE EXTREME

We've been in business since 1924, originally providing electrical supplies and support to the shipping industry. In the 1960s – when the great North Sea oil boom began – the EX industry was in its infancy, and few products had been specifically designed for use in hazardous environments. We responded to the new demand by developing safe, rugged, practical equipment for use on and offshore.

Our business grew with oil and gas, as we developed solutions in light, heat, ventilation and power distribution, achieving several 'world firsts' along the way. Over the years we've learned that what works for oil and gas also works in other potentially dangerous, cramped or inaccessible environments. SA Equip products are now used in shipping, aerospace, defence, utilities, pharmaceuticals, distilling, power stations and other heavy industry applications.

Many of our products are unique in the current market. Moreover, we have unrivalled experience in solving problems for dangerous conditions, in all kinds of industries, all over the world.



SAFETY & EFFICIENCY

At SA Equip, we help you work safely and efficiently in the most challenging and dangerous environments in the world.

We don't just keep you safe – although that's key to what we do. We enable. With our equipment, you can work in environments, conditions, temperatures and spaces where it would otherwise be impossible. You can achieve better results with less risk, and in fewer man-hours. With our help, you can do more with less.

That's why our promise to you is both safety and efficiency – efficiency that translates into real, tangible business benefits.



WHEN THE PRESSURE'S ON

We support demanding industries like oil and gas, petrochemicals, defence and aviation. Our equipment must perform brilliantly in the most demanding conditions, including explosive environments, treacherous seas and extreme temperatures. And when business conditions are equally tough, the superior performance of our equipment becomes even more beneficial.

Our kit is powerful, rugged and dependable. It is portable and flexible, so you can use it in otherwise inaccessible places and you can work quicker, independently of local conditions. Many of our products are the only examples of their kind which are fully tested and certified with ATEX accreditation. And of course, our kit is designed around safety.

It all means SA Equip can save you money, as well as keeping you safe.

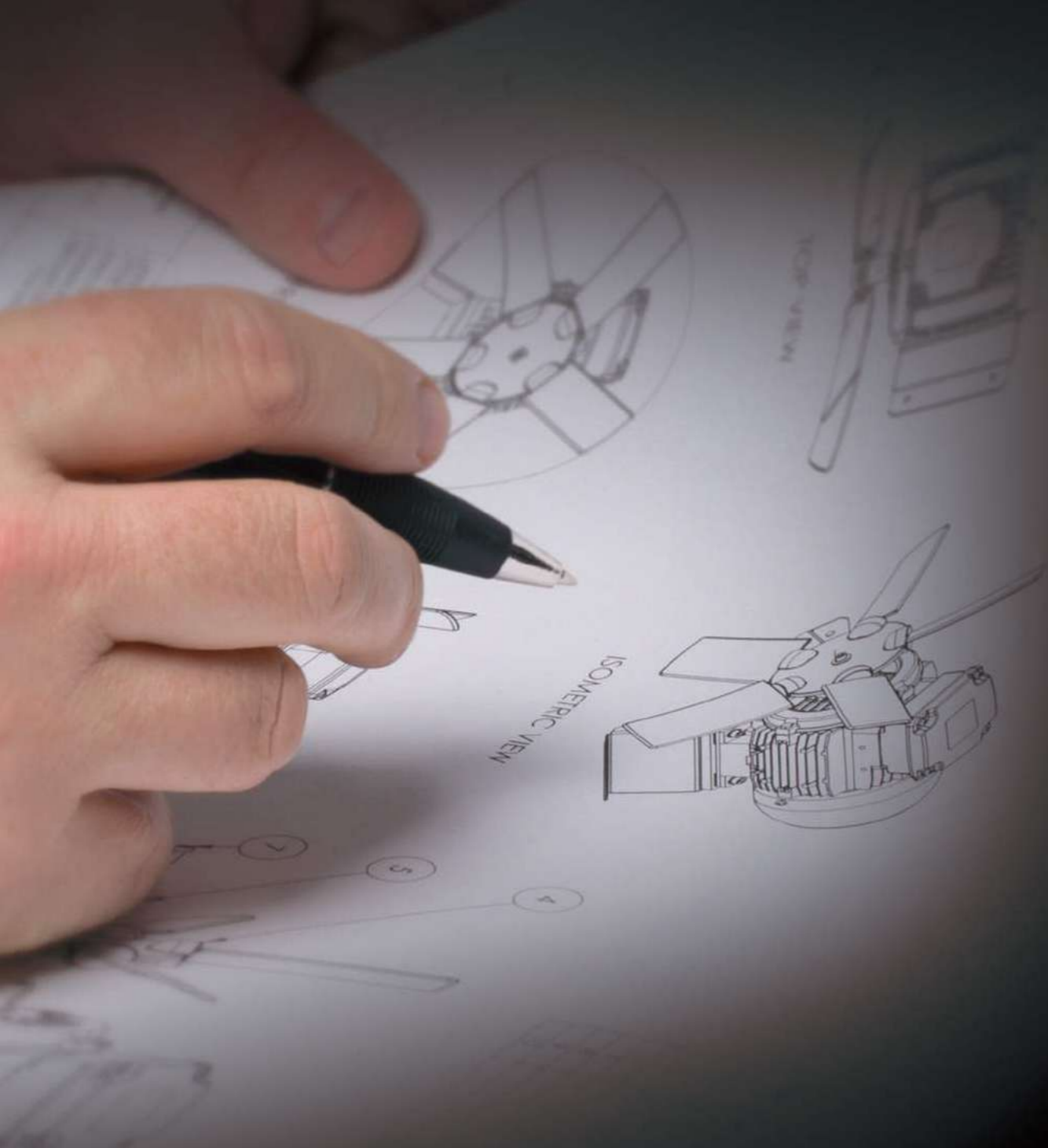


EXPERIENCE MATTERS

We are world leaders in EX equipment, and we're entirely dedicated to the field. We built our company alongside the expanding oil and gas industry, and we know that world intimately. As we've expanded to provide equipment for other environments – like utilities, power stations and aerospace – we've gone out of our way to become expert in those industries, too.

You can of course contact us simply to buy a product like a Tasklight or a Transformer. We'll supply what you want, and it will be amongst the very best of its kind available anywhere in the world.

But when you talk to us you also get the benefit of decades of experience, as well as in-depth product knowledge and a comprehensive understanding of health and safety legislation. We can advise on everything from support packages to operator training. And we will always recommend what we believe to be right for you, providing cost-effective solutions for real-world challenges.



A SAFER FUTURE

Since the 1960s, we've been designing, building and refining superb products that help our customers work safely and efficiently in demanding environments. We're committed to maintaining our lead in the industry – and we have no intention of resting on our laurels – so research and development is an important part of our mission.

As the years roll by, man will continue to explore and work in ever more demanding places. Legislation on safety will, quite rightly, continue to evolve, making increasing demands on technology. Our clients will ask us for answers to new challenges, and we will respond by developing new solutions.

We're always looking ahead, but that doesn't mean we expect you to refresh your kit every year. On the contrary, we develop products to last, future-proofing against regulations as well as technological development and designing new products that are compatible with our existing range wherever possible.



GLOBAL SUPPLY, GLOBAL SERVICE

Wherever there's a job to be done in demanding, potentially dangerous conditions, you'll find SA Equip products at work. From -40°C in polar icefields to the suffocating heat of Middle Eastern deserts we're there, supporting industries like oil and gas, petrochemicals, defence and aviation in some of the most extreme locations on the planet.

From our base in Scotland we offer both supply and service covering every continent. You can access technical information, expert advice, spares and service by direct contact with our head office.

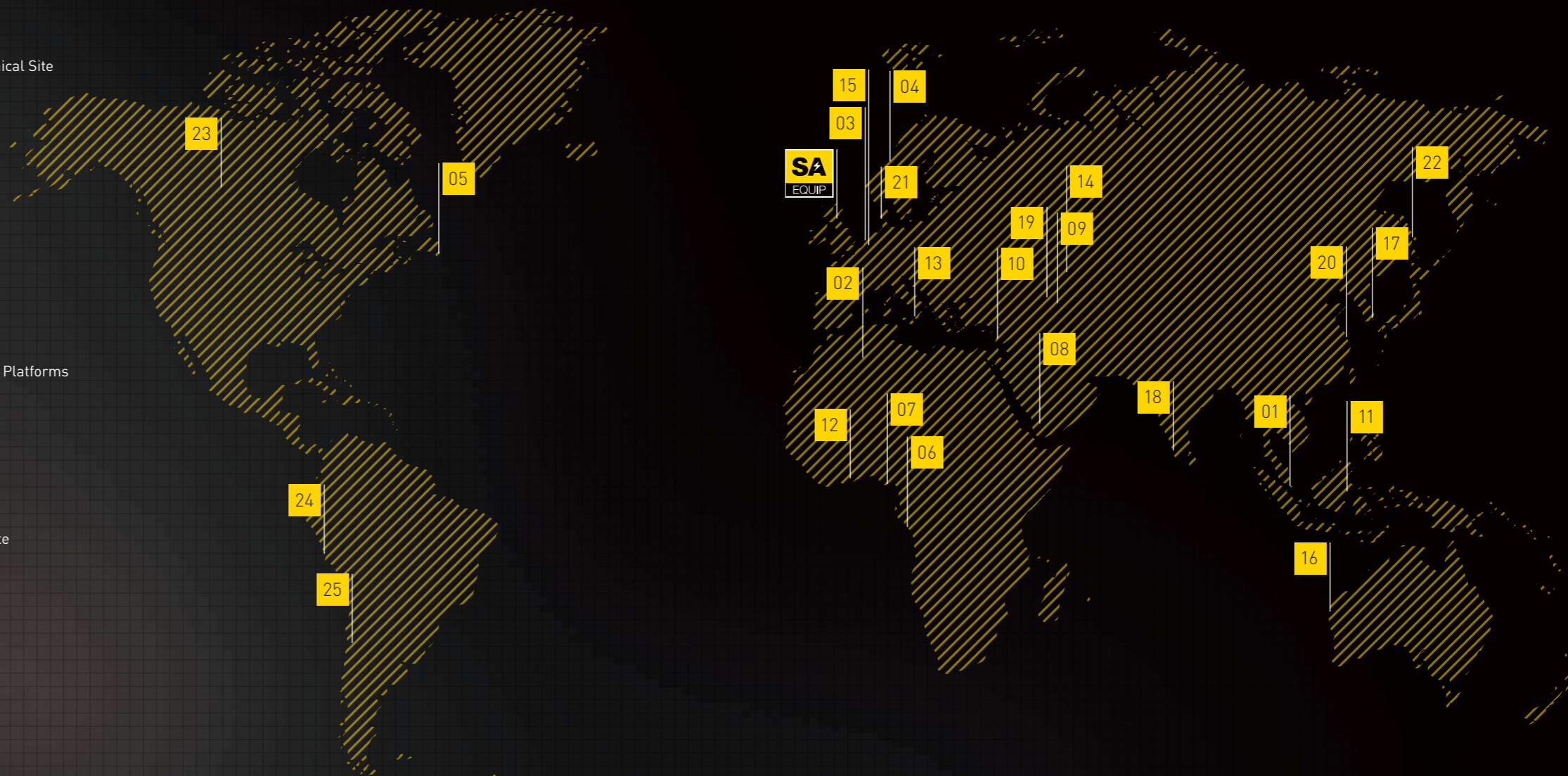
For more information about SA Equip products and services contact our customer support team on **+44 (0)333 240 6111** or send us an email to **info@saequip.com**



GLOBAL REACH

A SELECTION OF GLOBAL CLIENT LOCATIONS...

- 01 **SINGAPORE** FPSO
- 02 **ALGERIA** Gas Plant
- 03 **NETHERLANDS** Offshore Platform, Petrochemical Site
- 04 **NORWAY** Offshore Platform
- 05 **ST JOHN'S, CANADA** FPSOs
- 06 **CABINDA, ANGOLA** FPSO
- 07 **BONNY ISLAND, NIGERIA** LNG Terminal
- 08 **SANA'A, YEMEN** LNG Terminal
- 09 **BAKU, AZERBAIJAN** Offshore Platforms
- 10 **LEBANON** Petrochemical Site
- 11 **BONTANG, INDONESIA** Mining Services
- 12 **GHANA** Offshore Platform
- 13 **MESSINA, ITALY** Offshore LNG Terminal
- 14 **ATYRAU, KAZAKHSTAN** Oil Terminal, Offshore Platforms
- 15 **ANTWERPEN, BELGIUM** Petrochemical Site
- 16 **CARNARVON, AUSTRALIA** Offshore Platform
- 17 **ULSAN, SOUTH KOREA** FPSO
- 18 **KOCHI, INDIA** LNG Terminal
- 19 **TBILISI, GEORGIA** Oil Terminal
- 20 **JIANGSU PROVINCE, CHINA** Petrochemical Site
- 21 **ESBJERG, DENMARK** Offshore Platforms
- 22 **SAKHALIN ISLAND** Offshore Platforms
- 23 **FORT McMURRAY, CANADA** Onshore Oil
- 24 **LIMA, PERU** LNG Terminal
- 25 **CHILE** Mining Services





PRODUCT REFERENCE GUIDES



PRODUCT SPECIFICATION ICON KEY



Gas Zone 0



Gas Zones 1 & 2



Dust Zone 20



Dust Zones 21 & 22



Battery Powered



Rechargeable Battery



LED



Voltage Rating



Voltage Rating



Voltage Rating



Voltage Rating



Voltage Rating

ACCREDITATIONS



ATEX MARKINGS EXPLAINED

TYPICAL EQUIPMENT LABEL



PRODUCT CODE: **SAFH150P/700C110**

VOLTAGE: **110VAC** Baseefa09ATEX0226

CURRENT: **2.25 A @ -15°C** IECEx BAS 13.0094

WEIGHT: **3.5Kg** SERIAL NO:

CERTIFICATION: YEAR OF MANUF:

Ex e IIC T5 Gb

Ex tb IIIC T95 Db IP65

Ta -40°C to +65°C

CAUTION
Electrical Surface Heating Equipment
Do Not Damage

Please note: This information should not be used to zone areas or decide whether equipment is suitable. Specialist ATEX advice must always be taken before making decisions. SA Equip LLP accept no liability for use of this information. E&OE.

ATEX Equipment Category	
Category	Zone
1	0, 20
2	1, 21
3	2, 22

G	Gas
D	Dust

Protection Method	
d	Flameproof Enclosure
e	Increased Safety
ia/ib	Intrinsic Safety
m	Encapsulation
o	Oil Immersion
q	Power Filling
tb	Protection by Enclosure

Gas Group	Typical Hazard
IIA	Propane
IIIB	Ethylene
IIC	Hydrogen/Acetylene
II	All Gases

Dust Group	Typical Hazard
IIIA	Combustible Flyings
IIIB	Non-conductive Dust
IIIC	Conductive Dust

Temperature Class	Maximum Surface Temperature
T1	450°C
T2	300°C
T3	200°C
T4	135°C
T5	100°C
T6	85°C

KEY

ATEX Certificate Number	
Baseefa	Notified Body
09	Year of Certification
ATEX	ATEX Certified Equipment
0226	Certificate Number

IECEx Certificate Number	
BAS	Notified Body
13	Year of Certification
0094	Certificate Number

	EU Explosive Atmosphere Symbol
--	--------------------------------

ATEX Equipment Group	
Group II	Explosive Atmospheres (other than mines)
Group I	Mines susceptible to Firedamp

Temperature Class	Maximum Surface Temperature
T85	85°C
T95	95°C
T100	100°C
etc.	

T_a Operating Temperature

This gives the range of ambient temperatures that the product is certified to be used in.

Equipment Protection Level		
Zone	Gas EPL	Protection Afforded
0	Ga	Very High
1	Gb	High
2	Gc	Enhanced
Dust EPL		
20	Da	Very High
21	Db	High
22	Dc	Enhanced

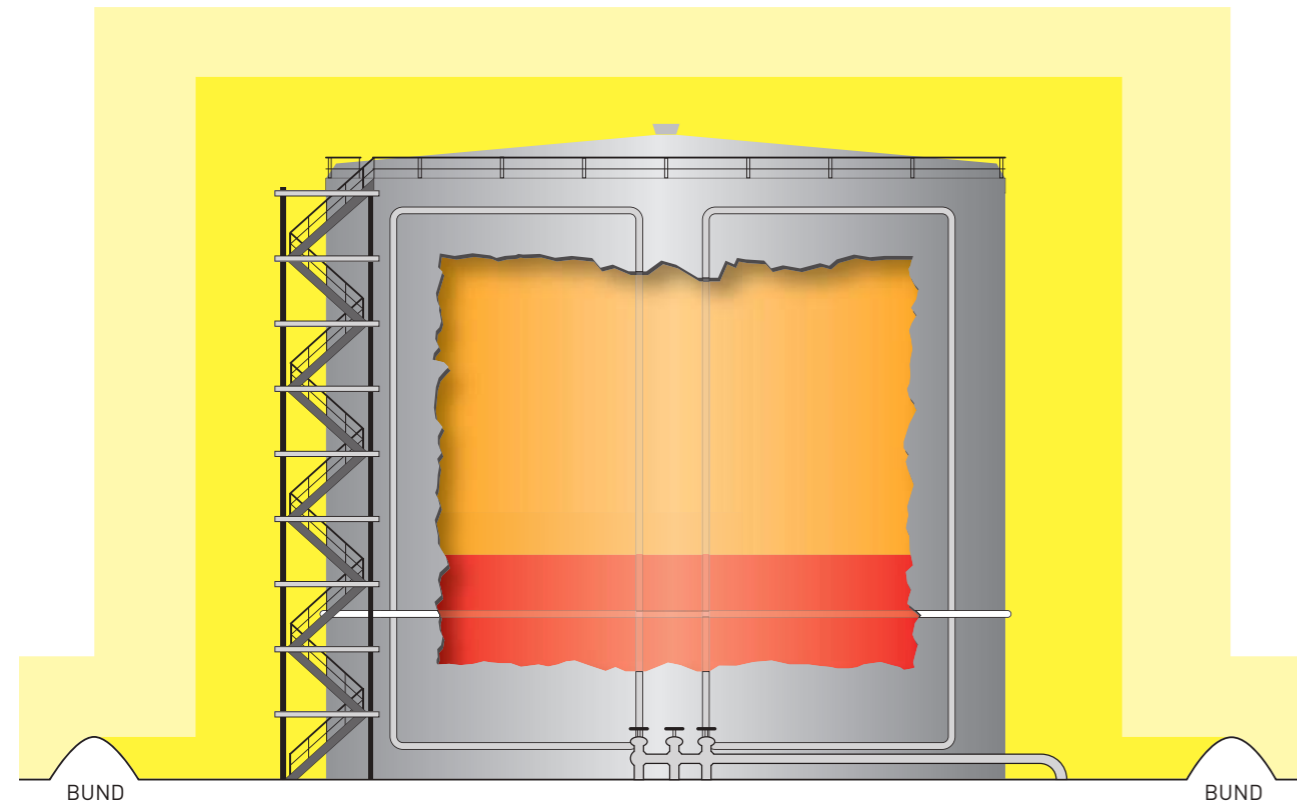
Ingress Protection			
1 st digit	Solids – protected from	2 nd digit	Liquids – protected from
0	Not protected	0	Not protected
1	Objects bigger than 50mm diameter	1	Vertically falling drops
2	Objects bigger than 12.5mm diameter	2	Drops hitting at 15°
3	Objects bigger than 2.5mm diameter	3	Spray
4	Objects bigger than 1mm diameter	4	Splashing
5	Dust	5	Jets
6	Sealed against dust	6	Powerful jets
		7	Immersion
		8	Continuous immersion

EXAMPLES OF HAZARDOUS AREA ZONES



- FLAMMABLE MATERIAL**
- in liquid form
 - Zone 0
 - Zone 1
 - Zone 2

COMMERCIAL BULK STORAGE TANK

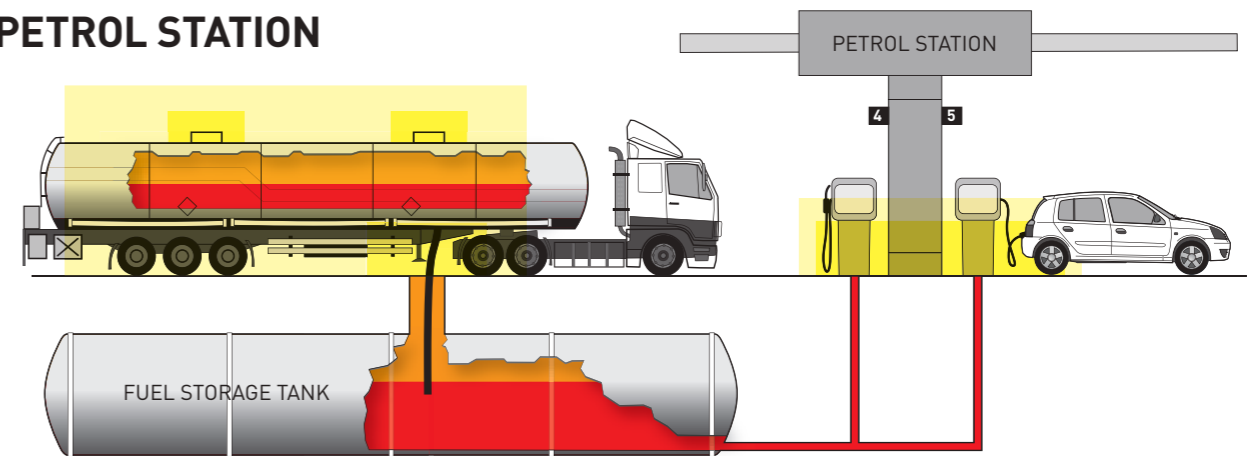


ZONES & EQUIPMENT CATEGORIES

Zones	Broad Definitions of Zones (for guidance only)	ATEX Equipment Category	Equipment Integrity Requirements
0 Gases/ Vapours	20 Explosive atmospheres are present continuously, for long periods or frequently	1	Equipment must be safe under normal operation, expected and rare malfunction
1	21 Explosive atmospheres are likely to occur occasionally under normal operation	2	Equipment must be safe under normal operation, expected malfunction
2	22 Explosive atmospheres may occur under abnormal operation and persist for a short period only	3	Equipment must be safe under normal operation

The higher the probability of an explosive atmosphere occurring and persisting, the higher the integrity requirements of the equipment to be installed.

PETROL STATION



Please note: This information should not be used to zone areas or decide whether equipment is suitable. Specialist ATEX advice must always be taken before making decisions. SA Equip LLP accept no liability for use of this information. E&OE.

PLUGS, SOCKETS & CABLES



PLUGS /

CEAG



24V (purple)



110V (yellow)



42V (white)



230V (blue)

ATX



24V (purple)



110V (yellow)



42V (white)



230V (blue)

STAHL



110V (yellow)



230V (blue)

SOCKETS & COUPLERS /

CEAG



24V (purple)



110V (yellow)



42V (white)



230V (blue)

ATX



24V (purple)



110V (yellow)



42V (white)



230V (blue)

STAHL



110V (yellow)



230V (blue)

CABLES /

HOFR Braided Cable

A braided cable with wire braiding that is heat and oil resistant and flame retardant.

SPECIFICATION:

- Conductor: Tinned Annealed Flexible Copper
- Sheath: Chlorosulphonated Polyethylene (CSP) in black
- Insulation: Ethylene Propylene Rubber (EPR)
- Voltage: 300/500V
- Armouring: Wire Braid



H07RN-F Cable

A heavy duty rubber cable that is oil resistant and flame retardant.

SPECIFICATION:

- Conductor: Plain Annealed Flexible Copper
- Sheath: Heavy Duty Polychloroprene (PCP) in black
- Insulation: Ethylene Propylene Rubber (EPR)
- Voltage: 450/750V



SY Braided Cable

A braided cable with steel wire braiding providing mechanical protection.

SPECIFICATION:

- Conductor: Plain Annealed Flexible Copper
- Sheath: Transparent PVC
- Insulation: PVC
- Voltage: 300/500V
- Armouring: Galvanised Steel Wire Braid



PUR Cable

A particularly durable cable under harsh conditions that is oil resistant and flame retardant.

SPECIFICATION:

- Conductor: Tinned Copper
- Sheath: Polyurethane (PUR) type TMPU in yellow
- Insulation: Ethylene Propylene Rubber (EPR)
- Voltage: 450/750V



"I have used SA for lighting and have always found it to be the best. When I discovered that the Flexiheat Heater was made by SA, I knew it would be truly excellent. As expected, it did the job quickly and saved the company thousands of pounds. We now set you as a benchmark for how products should be."

Electrical Engineer, North Sea platform

HEAT
LIGHT
AIR
POWER

32 **Heater**

36 **Pipe Heating Jackets**

40 **HeatBox**

HEAT

Low temperatures slow you down. And when work is restricted or stopped by the cold, you lose money. That's why an efficient, reliable, safe heat source can pay for itself in no time.

Our range includes a comprehensive system of EX certified heaters and pipe heating jackets, together with all the accessories and ancillary equipment you'll ever need to put them to work. For painting, coating, curing, composite repairs and other temperature-critical jobs, in temperatures as low as -20°C, the SA FLEXIHEAT EX Heater is the rugged, portable answer. As for pipework and instruments, SA FLEXIHEAT EX Jackets provide near-instant protection, precisely where you need it.

When you're battling cold, you need SA FLEXIHEAT on your side.

HEATER

SAPH15/400



POWERFUL, FLEXIBLE, PORTABLE, FULLY CERTIFIED

The powerful SA FLEXIHEAT EX Heater gets directly to your work area and heats it fast, whatever the conditions. With a compact, lightweight, ergonomic design, you can put it precisely where you need it, in minutes, with or without ducting, **with no need for a standby man**. It lets you get on with the job where and when you need to, at temperatures as low as -20°C, saving you time, risk and money on tasks like painting, coating and composite repairs. If you're not using the SA FLEXIHEAT EX Heater, you're out in the cold.

HEATER

SAPH15/400

BENEFITS

- ATEX Certified for Zones 1 and 2 (gas)
- Compact, portable, and lightweight
- Operational in temperatures as low as -20°C
- IP65 rated
- Produces airflow of 2130m³/hour
- 15kW output
- Efficient heating
- Optimised heating element design
- Marine grade materials
- Multiple lifting handles
- Can be used with or without ducting
- Compatible with SA CYCLONE Ducting (see page 104)
- Compatible with SA POWERNET MDU (see page 116)

You may also need...
Anti-static Ducting & Duct Couplers – see page 104
MDU – see page 116
Pipe Heating Jackets – see page 36



SPECIFICATIONS

CERTIFICATION

II 2 G c IIB T3
 Ex d e IIB T3 Gb

OPERATING TEMPERATURE

-20° to +40°C

INGRESS PROTECTION

IP65

DIMENSIONS

760mm x 560mm x 560mm
 (l x w x h)

WEIGHT

55kg exc. cable

CURRENT DRAW @ 400VAC

Start Up: 29A
 Run: 23A

FREE AIRFLOW

2130m³/h (1253cfm) @ 50Hz
 2560m³/h (1506cfm) @ 60Hz

DUCTING SIZE

300mm diameter

3 PHASE SUPPLY

3Ph+E or 3Ph+N+E

AIR SPEED

15.5m/s (51ft/s) @ 50Hz
 16.3m/s (54ft/s) @ 60Hz

TYPICAL TEMPERATURE RISE

Approx. 20°C above ambient

NOISE LEVEL @ 1M

83dbA

CABLE LENGTH

10m (or as required)

PATENT PROTECTED GB2524076

CORE PRODUCT INFORMATION

SA FLEXIHEAT EX Heater 15kW 400V (+/- 10%)
 3 Ph 50/60 Hz c/w 4P 32A CEAG plug and 10m of braided cable
Order Code: SAPH15/400CEA



CEAG 5P & STAHL 5P plugs and different cable lengths also available – please contact SA Equip for more details.

See page 26 for our Plug, Socket, and Cable guide.

See pages 142 – 145 for the complete Core Product Directory.



PIPE HEATING JACKETS

SAFH150 / SAFH050



INSTALLED IN SECONDS, ANYWHERE YOU NEED THEM

SA FLEXIHEAT EX Pipe Heating Jackets give you a safe, effective and super-fast alternative to expensive and complex systems – they're perfect for use where trace heating fails, or is difficult to install. They simply and quickly wrap around pipes wherever low temperatures cause the contents to wax and solidify and can be installed by one worker within seconds. With three different sizes and linkable sections, they work with valves, instruments and complex manifold systems as well as straight and curved pipework. Effective in temperatures as low as -40°C, they keep compressors and pumps running to enable you to get on with those important maintenance jobs. **The potential cost savings are huge.**

PIPE HEATING JACKETS

SAFH150 / SAFH050

BENEFITS

- ATEX and IECEx Certified for Zones 1 and 2 (gas), 21 and 22 (dust)
- Operational in temperatures as low as -40°C
- Tough and durable
- Highly portable and lightweight
- Rapid and easy to install
- Different size options – 400mm, 700mm, & 1000mm (narrow)
- Available in 110V & 230V versions
- Self-regulating heat output
- No additional equipment required
- Options allow for virtually any sized pipe
- Suitable for straight or curved pipework
- Linkable

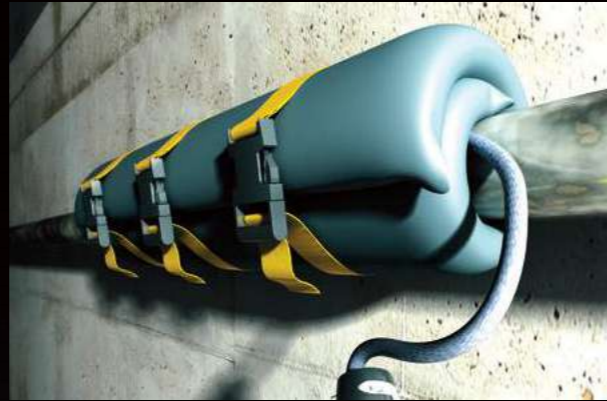
You may also need...

Heaters – see page 32

Extension Leads – see page 136

Transformers – see pages 120 & 124

Splitter Boxes – see page 128



SPECIFICATIONS

CERTIFICATION

Ex II 2 GD
Ex e IIC T5 Gb
Ex tb IIIC T95°C Db IP65

OPERATING TEMPERATURE

-40°C to +65°C

SELF REGULATING TEMPERATURE

65°C

VOLTAGE OPTIONS

110VAC, 230VAC

JACKET MATERIAL

Rubber coated glass cloth
Anti-static and Non-flammable

HEATING CABLE MATERIAL

Fluoropolymer

INGRESS PROTECTION

IP65

POWER (WATTS)

See product descriptions.
Measurements taken at 10°C

CURRENT DRAW (AMPS)

See product descriptions.
Measurements taken at -15°C

JACKET SIZES

SAFH150P/400C
400mm long x 600mm wide
Maximum pipe dia. 150mm

SAFH150P/700C
700mm long x 600mm wide
Maximum pipe dia. 150mm

SAFH050P/1000C
1000mm long x 300mm wide
Maximum pipe dia. 50mm

WEIGHT

2.2kg [SAFH150P/400C]
3.5kg [SAFH150P/700C]
3.0kg [SAFH050P/1000C]

FIXING METHOD

Adjustable tensioning belts with
snap-lock buckles

CORE PRODUCT INFORMATION

SA FLEXIHEAT EX 400mm Long Pipe Heating Jacket
110VAC Linkable 80W 0.96A for use with pipes up to
150mm dia. c/w CEAG plug & coupler and braided cable
Order Code: SAFH150P/400C110CEA



SA FLEXIHEAT EX 400mm Long Pipe Heating Jacket
230VAC Linkable 80W 0.46A for use with pipes up to
150mm dia. c/w CEAG plug & coupler and braided cable
Order Code: SAFH150P/400C230CEA



SA FLEXIHEAT EX 700mm Long Pipe Heating Jacket
110VAC Linkable 104W 1.25A for use with pipes up to
150mm dia. c/w CEAG plug & coupler and braided cable
Order Code: SAFH150P/700C110CEA



SA FLEXIHEAT EX 700mm Long Pipe Heating Jacket
230VAC Linkable 104W 0.60A for use with pipes up to
150mm dia. c/w CEAG plug & coupler and braided cable
Order Code: SAFH150P/700C230CEA



SA FLEXIHEAT EX 1000mm Long Pipe Heating Jacket
110VAC Linkable 72W 0.87A for use with pipes up to
50mm dia. c/w CEAG plug & coupler and braided cable
Order Code: SAFH050P/1000C110CEA



SA FLEXIHEAT EX 1000mm Long Pipe Heating Jacket
230VAC Linkable 72W 0.40A for use with pipes up to
50mm dia. c/w CEAG plug & coupler and braided cable
Order Code: SAFH050P/1000C230CEA



ATX & STAHL connectors and different cable lengths also available –
please contact SA Equip for more details.

See page 26 for our Plug, Socket, and Cable guide.

See pages 142 – 145 for the complete Core Product Directory.



HEATBOX

SAHB



PAINT & FLUID TEMPERATURES MAINTAINED

This portable SA FLEXIHEAT EX HeatBox will store containers of paint, PFP, grease and other substances at their optimum temperature right next to your application, even in a Zone 1 Hazardous area. This has been proven to deliver **extensive financial savings** as there is no longer the need to constantly carry product between heated stores and work site. It also means that the entire contents of the containers can be used, rather than wasting a percentage due to product solidifying. The HeatBox is air powered, exceptionally simple to use and virtually maintenance free.

HEATBOX

SAHB

BENEFITS

- ATEX Certified for Zones 1 & 2 (gas)
- Saves you time, risk, and money on tasks
- Compressed air powered – no electricity required
- Portable and lightweight
- Easy product application
- Takes standard 20 Ltr containers
- Higher quality application
- Temperature indicator
- Safe and simple temperature regulation
- Fast and safe heating to over 40°C



SPECIFICATIONS

CERTIFICATION

EX II 2 G c T4

MAXIMUM CONTAINER DIAMETER

280mm

DIMENSIONS

860mm x 400mm x 400mm

RECOMMENDED WORKING PRESSURE

5 bar

MIN/MAX PRESSURE

4 bar minimum, 8 bar maximum

AIR CONSUMPTION

280l/min @ 24 bar

WARRANTY

2 years

WEIGHT

15kg

CORE PRODUCT INFORMATION

SA FLEXIHEAT EX HeatBox

Order Code: SAHB/2-AP



Please contact SA Equip should you require further details.



'The Heatbox quickly becomes warm and works well in the environment it is intended to. It is user friendly and functional.'

Assistant Drilling Manager, Global Drilling Company

“I’ve been paint blasting for many years and I can honestly say that working with the SA LUMIN Blast Light has made my job easier than ever before.”

Experienced North Sea Blaster, Specialist Contract Company

HEAT
LIGHT
AIR
POWER

- 48 **LED Torch**
 - 52 **LED Tasklight**
 - 56 **LED Tasklight Kit**
 - 60 **LED Worklight 100**
 - 64 **LED Worklight 200**
 - 68 **LED Emergency Worklight**
 - 72 **LED Standard Floodlight**
 - 76 **LED Compact Floodlight**
 - 80 **UV LED Floodlight**
 - 84 **Blast Light**
-

LIGHT

Light – the right kind of bright, pure, dependable light – is pretty much essential for almost any kind of work. In a potentially dangerous environment, a safe and reliable light source can be a matter of life and death.

At SA Equip, we're experts in shining light into the most challenging places. From a hand-held torch weighing 145g to entire semi-permanent emergency lighting systems with fixing and protection devices, our comprehensive range has everything you'll ever need. On the rig, in a tank or a sewer, working alone or with a team, blasting in a dust-laden environment or outside in extreme weather conditions, our lighting range is second to none.

Safety is paramount, but it's about efficiency, too. If you can see properly, you can work better – so product benefits like extended battery life, easy fixing and smooth glare-free light translate into more productive shifts and ultimately, more profit.

SA LUMIN[®]

LED TORCH

EX150



HANDY, POWERFUL, EXTREMELY TOUGH

Weighing just 145g, the SA LUMIN EX LED Torch packs the power of a much larger handlamp into a compact, robust package. It throws out an impressive 135 lumens where you need it, and an Intelligent Light Sensor adjusts the beam, extending battery life to save you time and money. **Running up to 30 hours on one set of four standard AAA batteries**, it also features a glo cap so it's easy to find in the dark.



LED TORCH EX150

BENEFITS

- ATEX Certified for Zones 0, 1 and 2 (gas), 20, 21 and 22 (dust)
- Penetrating light beam
- Waterproof and dustproof
- Ergonomic design
- Optimum light output to size ratio
- Intelligent Light Sensor
- Up to 30 hours battery life
- Uses standard AAA batteries
- Glo cap

You may also need...
Lighting Kits – see page 56



SPECIFICATIONS

CERTIFICATION

- Ⓜ II 1G Ex ia IIC T4 Ga
- Ⓜ II 1D Ex ia IIIC T85°C Da

INGRESS PROTECTION

IP67

OPERATING TEMPERATURE

-20°C to +40°C

MATERIALS

Impact resistant thermoplastic resin

POWER SAVING MODE

Light sensor adjusts light power to suit the ambient light

BATTERIES

4 x AAA/R03 6V

BATTERY DURATION

High Power – 4 hours
Medium Power – 8 hours
Low Power – 30 hours

LIGHT OUTPUT

135 lumens

LIGHT SOURCE

High Power LED

DIMENSIONS

150mm x 38mm x 44mm

WEIGHT

145g

ACCESSORIES INCLUDED

Wrist Strap

CORE PRODUCT INFORMATION

SA LUMIN EX LED Torch c/w light sensor, wrist strap, and 4 x AAA/R03 6V batteries
Order Code: EX150



See pages 142 – 145 for the complete Core Product Directory.



SA LUMIN[®]

LED TASKLIGHT

SATL100



CLEAR, EVEN LIGHT PRECISELY WHERE YOU NEED IT

With a bank of 30 high-power LEDs, the SA LUMIN EX LED Tasklight gives you clear, even light output so you can see and work efficiently, practically anywhere. It's ideal for quick inspections, emergency response work, rope access work and tasks in remote or inaccessible areas. As it's rechargeable there are no trailing cables to trip over, and a **fast recharge time of 1-3 hours gives up to 6 hours use**. A versatile ergonomic design means you can hang it, stand it up, lie it down or hold it exactly where you need it.



LED TASKLIGHT SATL100

BENEFITS

- ATEX and IECEx Certified for Zones 0, 1 and 2 (gas), 20, 21 and 22 (dust)
- High Power LED Light Output
- Rechargeable – no trailing cables
- Up to 6 hours use per charge
- Waterproof and dustproof (IP66)
- Low charge warning
- Lightweight & highly ergonomic
- Tough and durable
- Retractable hook
- Fast charge time – 3 hours
- Available with 5-way charging rack

You may also need...
Tasklight Kits – see page 56
LED Floodlights – see pages 72, 76 & 80



SPECIFICATIONS

CERTIFICATION

- ⊕ II 1G Ex ia op is IIC T4 Ga
- ⊕ II 1D Ex ia IIIIC T100°C Da
- ⊕ I M1 Ex ia I Ma

CHARGING TIME

- Full charge – 3 hours
- 80% charge – 1 hour

OPERATING TEMPERATURE

- 20°C to +60°C

INGRESS PROTECTION

- IP66

BATTERY

- Lithium-Ion

LIGHT OUTPUT

- 600 lux at 1m with 30 high power LEDs

WEIGHT

- 615g (Tasklight only)
- 425g (Single Charger only)
- 7.7kg (Charging Rack only)

DIMENSIONS

- 289mm x 76mm x 46.5mm (Tasklight only)
- 140mm x 134.5mm x 104mm (Single Charger)
- 850mm x 270mm x 180mm (Charging Rack)

ELECTRONICS

- Low charge warning

CHARGER SUPPLY VOLTAGE

- 200-250VAC (Single Charger & Charging Rack)
- 12-14VDC (Single Charger only)

CHARGING TEMPERATURE

- 0°C to +40°C

CORE PRODUCT INFORMATION

SA LUMIN EX LED Rechargeable Tasklight offering 6 hours continuous use c/w charger, mains supply lead, & car socket lead
Order Code: SATL100



SA LUMIN EX LED Rechargeable Tasklight Set c/w 5 Tasklights, 5-Way Charging Rack, & Mains Supply Lead
Order Code: SATL100/CR5



SA LUMIN Tasklight Holster enabling hands-free operation of the Tasklight c/w adjustable strap
Order Code: SATL/HR



SA LUMIN Tasklight Magnetic Bracket c/w anti-static strap and stainless steel spring-loaded buckle
Order Code: SATL/MB



SA LUMIN Tasklight Stabilising Base Unit
Order Code: SATL/BU



See pages 142 – 145 for the complete Core Product Directory.



LED TASKLIGHT KIT

SATL100/KIT1 / SATL100/KIT2



EVERYTHING YOU NEED TO PUT YOUR TASKLIGHT TO WORK

The SA LUMIN EX LED Tasklight is now available with a comprehensive kit of accessories, and **ready to use in any eventuality**. Along with the Tasklight itself, the kit includes a holster, magnetic bracket, base unit, and a handy additional EX150 Torch together with a charger and charging leads.



LED TASKLIGHT KIT

SATL100/KIT1 / SATL100/KIT2

BENEFITS

- Ideal for quick inspections and small tasks
- Leather holster
 - Hands free operation
 - Suitable for rope access work
 - Durable, anti-static leather construction
 - Conductive strap fits across body
 - Extra slots for belt fastening
 - Allows on/off operation of Tasklight while in holster
- Magnetic bracket
 - Enables Tasklight to be used as a worklight
 - Stainless steel magnet and mount, encased in anti-static rubber
 - Spring-loaded buckle-strap for easy attachment
 - Sticks to any magnetic metal surface at any angle
- Base unit
 - Anti-static rubber unit stabilises Tasklight when standing on end
 - Hole in base to facilitate attaching to a stand if necessary

You may also need...

Tasklight only – see page 52

Torch only – see page 48

Holster only – see page 55

Magnetic Bracket only – see page 55

LED Floodlights – see pages 72, 76 & 80



SPECIFICATIONS

CASE DIMENSIONS

460mm x 325mm x 120mm

WEIGHT

4.0kg [SATL100/KIT1]

3.8kg [SATL100/KIT2]

CONTENTS

KIT1

- 1 x SA LUMIN EX LED Tasklight
- 1 x Leather Holster
- 1 x Magnetic Bracket
- 1 x Base Unit
- 1 x Charger
- 1 x Charging Lead 200-250VAC
- 1 x Vehicle Charging Lead 12-14VDC
- 1 x SA LUMIN EX LED Torch

KIT2

- 1 x SA LUMIN EX LED Tasklight
- 1 x Leather Holster
- 1 x Magnetic Bracket
- 1 x Charger
- 1 x Charging Lead 200-250VAC
- 1 x Vehicle Charging Lead 12-14VDC

For all other specifications, please refer to page 55 for the SA LUMIN EX LED Tasklight and page 51 for the SA LUMIN EX LED Torch.

CORE PRODUCT INFORMATION

SA LUMIN EX LED Tasklight Kit 1 c/w:

- 1 x SA LUMIN EX LED Tasklight,
- 1 x Leather Holster,
- 1 x Magnetic Bracket,
- 1 x Base Unit,
- 1 x Charger,
- 1 x Charging Lead 200-250VAC,
- 1 x Vehicle Charging Lead 12-14VDC,
- 1 x SA LUMIN EX LED Torch

Order Code: SATL100/KIT1



SA LUMIN EX LED Tasklight Kit 2 c/w:

- 1 x SA LUMIN EX LED Tasklight,
- 1 x Leather Holster,
- 1 x Magnetic Bracket,
- 1 x Charger,
- 1 x Charging Lead 200-250VAC,
- 1 x Vehicle Charging Lead 12-14VDC

Order Code: SATL100/KIT2



See pages 142 – 145 for the complete Core Product Directory.



LED WORKLIGHT 100

SA100



EYE-FRIENDLY LIGHT, ANYWHERE YOU NEED IT

The new generation Zone 1 & 2 certified SA LUMIN EX LED Worklights are designed with you, the user, in mind. **Advanced LED technology is combined with exceptionally low cost of ownership to provide complete peace of mind.** Exceptional cable gland and socket protection further improves the reliability of this product. The SA LUMIN LED Worklight 100 is our compact version and is available in linkable and standard formats. Weighing only 1.8kgs, this is a true **'go anywhere'** product. It consumes less than 29 watts of power (at 110V) yet pumps out up to 4000 lumens of light.



LED WORKLIGHT 100

SA100

BENEFITS

- ATEX and IECEx Certified for Zones 1 and 2 (gas), 21 and 22 (dust)
- High Power LED technology
- 180° light output
- Lightweight and compact
- Low cost of ownership
- Linkable versions available
- Advanced diffuser system
- Enhanced cable gland & socket protection
- Tough and durable
- High light output
- Exceptionally reliable
- Waterproof and dustproof
- T4 Temperature rating
- Supplied with Adjustable Hanging Straps and Protective Film
- Vessel Entry Kit available

You may also need...
Transformers – see pages 120 & 124
Splitter Boxes – see page 128



SPECIFICATIONS

CERTIFICATION

- ⊕ II 2 G Ex eb mb op is IIC T4 Gb
- ⊕ II 2 D Ex tb op is IIIC T80°C Db

INGRESS PROTECTION

IP66

OPERATING TEMPERATURE

-20°C to +55°C

LED LIFE

Approx. 50,000 hours

LIGHT OUTPUT

Up to 4000 lumens (180°)

LIGHT SOURCE

High Power LED Module

CABLE LENGTH

- 5m (Linkable)
- 10m (Non-Linkable)
- 20m (Non-Linkable 24V)
- (or as required)

DIMENSIONS

675mm x 175mmØ

WEIGHT

1.8kg

CORE PRODUCT INFORMATION

SA LUMIN EX LED Worklight 100, 24W 24VAC/DC
 c/w ATX plug and braided cable

Order Code: SA100A24ATX



SA LUMIN EX LED Worklight 100, 24W 42VAC
 c/w CEAG plug and braided cable

Order Code: SA100A42CEA



SA LUMIN EX LED Worklight 100, 24W 110VAC
 Linkable, c/w CEAG plug & coupler and braided cable

Order Code: SA100C110CEA



SA LUMIN EX LED Worklight 100, 24W 230VAC
 Linkable, c/w CEAG plug & coupler and braided cable

Order Code: SA100C230CEA



SA LUMIN Worklight Plain Bracket

Order Code: SAFB090



SA LUMIN Worklight Magnetic Bracket

Order Code: SAFB100



SA LUMIN Worklight Magnetic Swivel Bracket

Order Code: SAFB105



SA LUMIN Worklight Scaffold Bracket

Order Code: SAFB110



SA LUMIN Worklight Antistatic Protective Film

Order Code: SASP113



SA LUMIN EX LED Worklight 100 Vessel Entry Kit
 c/w 1 x 110V-24V Transformer with 15m of braided cable & CEAG input plug, 4 x SA LUMIN EX LED Worklight 100, 24V, each with 20m of braided cable and ATX plug

Order Code: SAVK100/244-110/CEA



SA LUMIN EX LED Worklight 100 Vessel Entry Kit
 c/w 1 x 230V-24V Transformer with 15m of braided cable & CEAG input plug, 4 x SA LUMIN EX LED Worklight 100, 24V, each with 20m of braided cable and ATX plug

Order Code: SAVK100/244-230/CEA



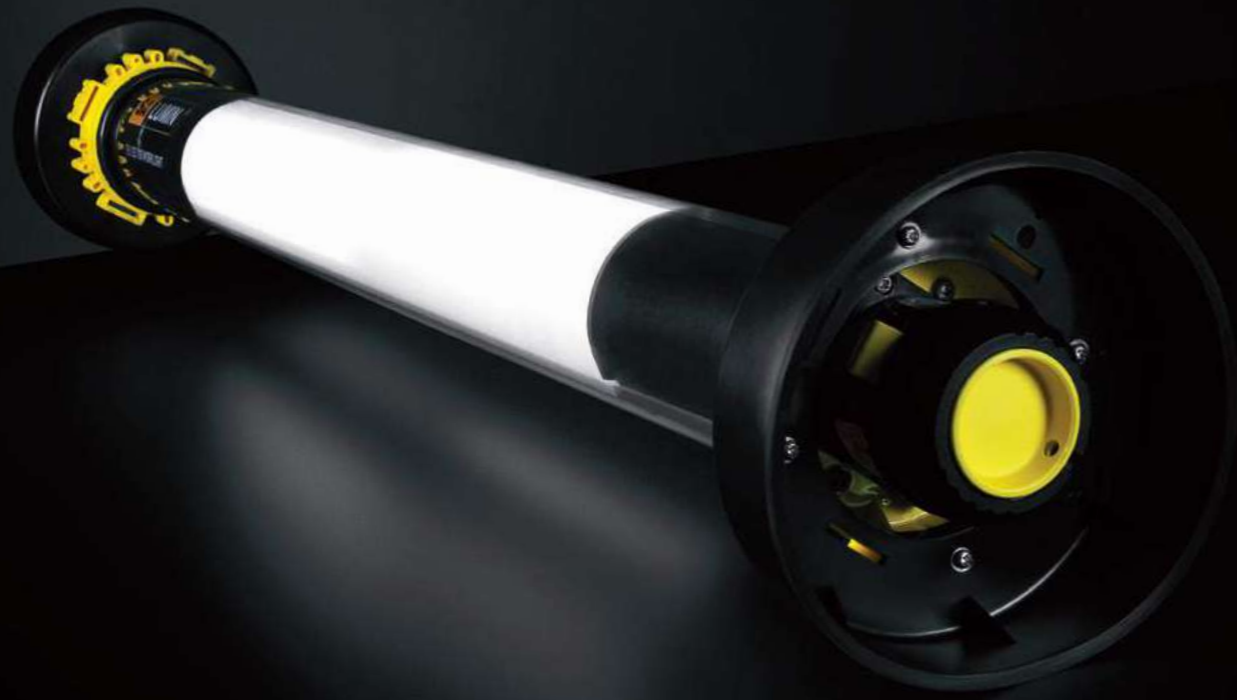
All SA LUMIN Worklights are supplied with anti-static Protective Film and adjustable Hanging Straps. **ATX** and **STAHL** connectors and different cable lengths also available – please contact SA Equip for more details.

See page 26 for our Plug, Socket, and Cable guide.
 See pages 142 – 145 for the complete Core Product Directory.



LED WORKLIGHT 200

SA200



VIRTUALLY INDESTRUCTIBLE & EXCEPTIONALLY RELIABLE

The new generation Zone 1 & 2 certified SA LUMIN EX LED Worklights are designed with you, the user, in mind. **Advanced LED technology is combined with exceptionally low cost of ownership to provide complete peace of mind.** Exceptional cable gland and socket protection further improves the reliability of this product. The SA LUMIN LED Worklight 200 provides 360° of light output at up to 8000 lumens, yet only weighs 2.7kg.



LED WORKLIGHT 200

SA200

BENEFITS

- ATEX and IECEx Certified for Zones 1 & 2 (gas), 21 & 22 (dust)
- High Power LED technology
- 360° light output
- Low cost of ownership
- Linkable versions available
- Advanced diffuser system
- Enhanced cable gland and socket protection
- Lightweight and compact
- Tough and durable
- High light output
- Exceptionally reliable
- Waterproof and dustproof
- T4 Temperature rating
- Supplied with Adjustable Hanging Straps and Protective Film
- Vessel Entry Kit available

You may also need...
Transformers – see pages 120 & 124
Splitter Boxes – see page 128



SPECIFICATIONS

CERTIFICATION

- ⊕ II 2 G Ex eb mb op is IIC T4 Gb
- ⊕ II 2 D Ex tb op is IIIC T90°C Db

INGRESS PROTECTION

IP66

OPERATING TEMPERATURE

-20°C to +55°C

LED LIFE

Approx. 50,000 hours

LIGHT OUTPUT

Up to 8000 lumens (360°)

LIGHT SOURCE

High Power LED Module

CABLE LENGTH

- 5m (Linkable)
- 10m (Non-Linkable)
- 20m (Non-Linkable 24V)
- (or as required)

DIMENSIONS

1064mm x 175mmØ

WEIGHT

2.7kg

CORE PRODUCT INFORMATION

SA LUMIN EX LED Worklight 200, 48W 24VAC/DC
 c/w ATX plug and braided cable
Order Code: SA200A24ATX



SA LUMIN EX LED Worklight 200, 48W 42VAC/DC
 c/w CEAG plug and braided cable
Order Code: SA200A42CEA



SA LUMIN EX LED Worklight 200, 48W 110VAC/DC
 Linkable, c/w CEAG plug & coupler and braided cable
Order Code: SA200C110CEA



SA LUMIN EX LED Worklight 200, 48W 230VAC/DC
 Linkable, c/w CEAG plug & coupler and braided cable
Order Code: SA200C230CEA



SA LUMIN Worklight Plain Bracket
Order Code: SAFB090



SA LUMIN Worklight Magnetic Bracket
Order Code: SAFB100



SA LUMIN Worklight Magnetic Swivel Bracket
Order Code: SAFB105



SA LUMIN Worklight Scaffold Bracket
Order Code: SAFB110



SA LUMIN Worklight Antistatic Protective Film
Order Code: SASP114



SA LUMIN EX LED Worklight 200 Vessel Entry Kit
 c/w 1 x 110V-24V Transformer with 15m of braided cable & CEAG input plug, 4 x SA LUMIN EX LED Worklight 200, 24V, each with 20m of braided cable and ATX plug
Order Code: SAVK200/244-110/CEA



SA LUMIN EX LED Worklight 200 Vessel Entry Kit
 c/w 1 x 230V-24V Transformer with 15m of braided cable & CEAG input plug, 4 x SA LUMIN EX LED Worklight 200, 24V, each with 20m of braided cable and ATX plug
Order Code: SAVK200/244-230/CEA



All SA LUMIN Worklights are supplied with anti-static Protective Film and adjustable Hanging Straps. **ATX** and **STAHL** connectors and different cable lengths also available – please contact SA Equip for more details.

See page 26 for our Plug, Socket, and Cable guide.
 See pages 142 – 145 for the complete Core Product Directory.



LIGHT

LED EMERGENCY WORKLIGHT

SAE100



OUR TOUGH, DURABLE WORKLIGHT, WITH ADDED LIFE-SAVING EMERGENCY BACKUP

The SA LUMIN EX LED Emergency Worklight brings all the features and benefits of our standard Worklights to the workplace – including smooth, eye-friendly light, a **robust, almost unbreakable design** and practically zero maintenance, but has a built-in Lithium-ion battery that provides **emergency lighting for up to 90 minutes** following a power failure. In most emergencies that's enough to evacuate a work area, tank or confined space safely, and could mean the difference between life and death. Like the standard model, it can be daisy-chained for larger areas and works with our SA LUMIN Fixing System for fast, secure fixing to most surfaces.



LED EMERGENCY WORKLIGHT

SAE100

BENEFITS

- ATEX and IECEx Certified for Zones 1 and 2 (gas), 21 and 22 (dust)
- T4 Temperature rating
- High Power LED technology
- Lightweight and compact
- Linkable in-line
- Tough and durable
- Exceptionally reliable
- Waterproof and dustproof
- Anti-static protective film system
- Emergency battery backup function
- Adjustable Hanging Straps

You may also need...

Standard LED Worklights – see pages 60 & 64

Transformers – see pages 120 & 124

Splitter Boxes – see page 128



SPECIFICATIONS

CERTIFICATION

- ⊕ II 2 G Ex eb mb op is IIC T4 Gb
- ⊕ II 2 D Ex tb op is IIIC T80°C Db

INGRESS PROTECTION

IP66

OPERATING TEMPERATURE

-20°C to +55°C

LED LIFE

Approx. 50,000 hours

BATTERY BACKUP OPERATION

Up to 2000 lumens for 90 minutes

BATTERY CHARGING TIME

11 hours approx.

LIGHT OUTPUT

4000 lumens

LIGHT SOURCE

High Power LED Module

WEIGHT

4kg

DIMENSIONS

1064mm x 175mmØ

CORE PRODUCT INFORMATION

SA LUMIN EX LED Emergency Worklight, 32W 24VAC/VDC
c/w ATX plug and 10m of braided cable
Order Code: SAE100A24ATX



SA LUMIN EX LED Emergency Worklight, 32W 110VAC/VDC
Linkable c/w CEAG plug & coupler and 5m of braided cable
Order Code: SAE100C110CEA



SA LUMIN EX LED Emergency Worklight, 32W 110VAC/VDC
Linkable c/w ATX plug and 5m of braided cable
Order Code: SAE100C110ATX



SA LUMIN Worklight Plain Bracket
Order Code: SAFB090



SA LUMIN Worklight Magnetic Bracket
Order Code: SAFB100



SA LUMIN Worklight Magnetic Swivel Bracket
Order Code: SAFB105



SA LUMIN Worklight Scaffold Bracket
Order Code: SAFB110



SA LUMIN Worklight Antistatic Protective Film
Order Code: SASP114



All SA LUMIN Worklights are supplied complete with anti-static Protective Film and Hanging Straps.

Different combinations including cable lengths, connectors and voltages also available – please contact SA Equip for more details.

See page 26 for our Plug, Socket, and Cable guide.

See pages 142 – 145 for the complete Core Product Directory.



LED FLOODLIGHT

SAFL300



STRONG, POWERFUL, WIDE SPREAD OF LIGHT

Compact and highly powerful, this SA LUMIN ATEX LED Floodlight will provide a **strong 5000 lumen light output** to your work area with a light coverage of 13m² at 5m using the latest LED technology. Complete with an adjustable swivel head, you can direct the light to exactly where you need it. Operational in temperatures of -50°C to +55°C, you can successfully operate this light in many global locations. Available with an optional protective shield, protective film, and scaffold bracket, the SA LUMIN ATEX LED Floodlight is extremely maintenance friendly with in-built voltage drop protection and a 5 year warranty.



LED FLOODLIGHT

SAFL300

BENEFITS

- ATEX and IECEx Certified for Zones 1 and 2 (gas), 21 and 22 (dust)
- Certified Portable
- High Power LED Light Beam
- 13m² light coverage at 5m
- 5-year warranty
- Maintenance Friendly
- Operational temperature -50°C to +55°C
- In-built Voltage Drop Protection
- Waterproof and dustproof
- Toughened Glass lens
- T4 Temperature rated
- Adjustable swivel head
- Linkable version available
- Anti-Static Protective Lens System
- Optional Scaffold Bracket
- Optional Adjustable Stand
- Vessel Entry Kits available

Compatible with the **SA POWERNET** range
Compatible with the **SA LUMIN** Vessel Entry Kits



SPECIFICATIONS

CERTIFICATION

Ex II 2 GD
Ex emb IIC T4 Gb
Ex tb IIIC T82°C Db

INGRESS PROTECTION

IP66 & IP67

VOLTAGE OPTIONS

24VAC/DC, 42VAC/DC,
110VAC, 230VAC

OPERATING TEMPERATURE

-50°C to +55°C (Non-Linkable)
-20°C to +40°C (Linkable)

LIGHT OUTPUT

5000 lumens

LIGHT COVERAGE

At 5m distance, 100 lux or greater,
over an area of 13m²

WARRANTY

5 years

CABLE LENGTH

10m (or as required)

DIMENSIONS

430mm (w) x 260mm (d) x 390mm (h)
(Non-Linkable version)

WEIGHT

10.2kg (Non-Linkable version)
11.6kg (Linkable version)

CORE PRODUCT INFORMATION

SA LUMIN EX LED Floodlight 68W 24VAC
c/w ATX plug and braided cable
Order Code: SAFL300A24ATX



SA LUMIN EX LED Floodlight 68W 42VAC
c/w CEAG plug and braided cable
Order Code: SAFL300A42CEA



SA LUMIN EX LED Floodlight 68W 110VAC
c/w CEAG plug and braided cable
Order Code: SAFL300A110CEA



SA LUMIN EX LED Floodlight 68W 230VAC
c/w CEAG plug and braided cable
Order Code: SAFL300A230CEA



SA LUMIN EX LED Floodlight 68W 110VAC
Linkable, c/w CEAG plug and braided cable
Order Code: SAFL300C110CEA



SA LUMIN EX LED Floodlight 68W 230VAC
Linkable, c/w CEAG plug and braided cable
Order Code: SAFL300C230CEA



SA LUMIN Floodlight Scaffold Bracket
Order Code: SAFL/SB



SA LUMIN Floodlight Protective Shield
Order Code: SAFL/PS



SA LUMIN Floodlight Protective Film
Order Code: SAFL/PF



SA LUMIN Floodlight Tripod Stand
Order Code: SAFL/TS



Vessel Entry Kits available – **SAVK300F/244-110/CEA** and **SAVK300F/244-230/CEA**

Different combinations of plugs and cable lengths also available –
please contact SA Equip for more details.

See page 26 for our Plug, Socket and Cable guide.

See pages 142 – 145 for the complete Core Product Directory.



LED COMPACT FLOODLIGHT

SAFL200



EXCEPTIONALLY COMPACT FLOODLIGHT WITH POWERFUL LIGHT SPREAD

An extremely compact version of the new SA LUMIN Floodlight, the SAFL200 still packs an exceptional punch with a **light output at 2500 lumens** to your work area with a light coverage of 6.5m² at 5m using the latest LED technology. Complete with an adjustable swivel head, you can direct the light to exactly where you need it. Operational in temperatures of -50°C to +55°C, you can successfully operate this light in many global locations. Available with an optional protective shield, protective film, and scaffold bracket, the SA LUMIN ATEX LED Compact Floodlight is extremely maintenance friendly with in-built voltage drop protection and a 5 year warranty.

LED COMPACT FLOODLIGHT

SAFL200

BENEFITS

- ATEX and IECEx Certified for Zones 1 and 2 (gas), 21 and 22 (dust)
- Certified Portable
- High Power LED Light Beam
- 6.5m² light coverage at 5m
- 5-year warranty
- Maintenance Friendly
- Operational temperature -50°C to +55°C
- In-built Voltage Drop Protection
- Waterproof and dustproof
- Toughened Glass
- T4 Temperature rated
- Adjustable swivel head
- Anti-Static Protective Lens System
- Optional Scaffold Brackets

Compatible with the **SA POWERNET** range
Compatible with the **SA LUMIN** Vessel Entry Kits



SPECIFICATIONS

CERTIFICATION

Ex II 2 GD
Ex emb IIC T4 Gb
Ex tb IIIC T82°C Db

INGRESS PROTECTION

IP67

VOLTAGE OPTIONS

24VAC/DC, 42VAC/DC,
110VAC, 230VAC

OPERATING TEMPERATURE

-50°C to +55°C

LIGHT OUTPUT

2500 lumens

LIGHT COVERAGE

At 5m distance, 100 lux or greater,
over an area of 6.5m²

WARRANTY

5 years

CABLE LENGTH

10m (or as required)

DIMENSIONS

340mm (w) x 220mm (d) x 390mm (h)

WEIGHT

7.2kg

CORE PRODUCT INFORMATION

SA LUMIN EX LED Compact Floodlight 34W 24VAC/DC
c/w ATX plug and braided cable
Order Code: SAFL200A24ATX



SA LUMIN EX LED Compact Floodlight 34W 42VAC/DC
c/w CEAG plug and braided cable
Order Code: SAFL200A42CEA



SA LUMIN EX LED Compact Floodlight 34W 110VAC
c/w CEAG plug and braided cable
Order Code: SAFL200A110CEA



SA LUMIN EX LED Compact Floodlight 34W 230VAC
c/w CEAG plug and braided cable
Order Code: SAFL200A230CEA



SA LUMIN Compact Floodlight Scaffold Bracket
Order Code: SAFL/SB



SA LUMIN Compact Floodlight Tripod Stand
Order Code: SAFL/TS



SA LUMIN Compact Floodlight Protective Shield
Order Code: SAFL/PS-C



SA LUMIN Compact Floodlight Protective Film
Order Code: SAFL/PF-C



SA LUMIN EX LED Compact Floodlight Vessel Entry Kit
c/w 1 x 110V-24V Transformer with 15m of braided cable
and CEAG input plug, 4 x SA LUMIN EX LED Compact
Floodlights 24V, each with 20m of braided cable & ATX plug
Order Code: SAVK200F/244-110/CEA



SA LUMIN EX LED Compact Floodlight Vessel Entry Kit
c/w 1 x 230V-24V Transformer with 15m of braided cable
and CEAG input plug, 4 x SA LUMIN EX LED Compact
Floodlights 24V, each with 20m of braided cable & ATX plug
Order Code: SAVK200F/244-230/CEA



Different combinations of plugs and cable lengths also available –
please contact SA Equip for more details.

See page 26 for our Plug, Socket and Cable guide.

See pages 142 – 145 for the complete Core Product Directory.



UV LED FLOODLIGHT

SAFL350



CURE COATINGS UP TO 6x FASTER

Proven under controlled test conditions, the UV LED Floodlight is a portable ATEX Zone 1, 2, 21 and 22 certified unit, yet is powerful enough to cure UV sensitive coatings such as FibaRoll, at an amazing **6x faster than standard LED Floodlights**. This high performance and reliable UV LED Floodlight is designed with ultra-long life UV LEDs and provides a highly effective 390nm wavelength – ideal for wherever powerful UV light is required.



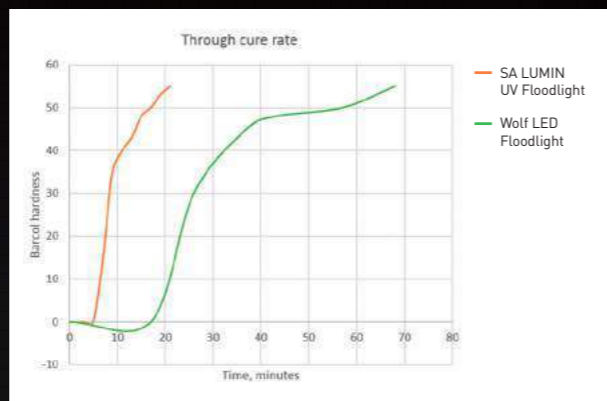
UV LED FLOODLIGHT

SAFL350

BENEFITS

- ATEX and IECEx Certified for Zones 1 and 2 (gas), 21 and 22 (dust)
- Certified Portable
- High Power UV LED Light Beam
- 5-year warranty
- Maintenance Friendly
- Operational temperature -50°C to +55°C
- In-built Voltage Drop Protection
- Waterproof and dustproof
- Toughened glass lens
- T4 Temperature rated
- Adjustable swivel head
- Linkable version available
- Anti-Static Protective Lens System
- Optional Scaffold Brackets

You may also need...
Transformers – see pages 120 & 124
Splitter Boxes – see page 128



SPECIFICATIONS

CERTIFICATION

Ex II 2 GD
 Ex emb IIC T4 Gb
 Ex tb IIIC T82°C Db

INGRESS PROTECTION

IP67

VOLTAGE OPTIONS

24VAC/DC, 110VAC, 230VAC

OPERATING TEMPERATURE

-50°C to +55°C (Non-Linkable)
 -20°C to +40°C (Linkable)

LIGHT WAVELENGTH

390nm

WARRANTY

5 years

CABLE LENGTH

10m (or as required)

DIMENSIONS

430mm (w) x 230mm (d) x 390mm (h)
 (Non-Linkable version)

WEIGHT

10.2kg (Non-Linkable version)

CORE PRODUCT INFORMATION

SA LUMIN EX UV LED Floodlight 68W 24VAC/DC
 c/w ATX plug and braided cable
Order Code: SAFL350A24ATX



SA LUMIN EX UV LED Floodlight 68W 110VAC
 c/w CEAG plug and braided cable
Order Code: SAFL350A110CEA



SA LUMIN EX UV LED Floodlight 68W 230VAC
 c/w CEAG plug and braided cable
Order Code: SAFL350A230CEA



SA LUMIN Floodlight Scaffold Bracket
Order Code: SAFL/SB



SA LUMIN Floodlight Protective Film
Order Code: SAFL/PF



SA LUMIN Floodlight Tripod Stand
Order Code: SAFL/TS



Different combinations of plugs and cable lengths also available – please contact SA Equip for more details.

See page 26 for our Plug, Socket and Cable guide.

See pages 142 – 145 for the complete Core Product Directory.



LIGHT

BLAST LIGHT

SABL120A24



CONSISTENT, PRECISE BLASTING FOR UP TO 100% GREATER EFFICIENCY

With direct illumination straight onto the work focus, our Blast Light can **directly improve productivity levels** by eliminating the need to go back over missed areas. A quick-release hose clamp, disposable protective lens system and 20m of braided cable make it easy to use, while a penetrating beam **shines right through dust**, cutting the need to wait for clear air before inspection.



BLAST LIGHT

SABL120A24

BENEFITS

- ATEX Certified for Zones 1 and 2 (gas), 21 and 22 (dust)
- Penetrating beam of light
- Waterproof and dustproof
- Easy to use
- Replaceable Protective Lens System
- Quick release hose clamp
- Lightweight
- T4 temperature rating
- 24V operating voltage
- Lens Protection Cap
- Available with a Water Jetting Clamp
- Compatible with the SA POWERNET 400V Transformer
- Compatible with the SA LUMIN LED Vessel Entry Kits

Your may also need...

Extension Leads – see page 136

Transformers – see pages 120 & 124

Splitter Boxes – see page 128



SPECIFICATIONS

CERTIFICATION

- ⊕ II 2G Ex d IIC T4 Gb
- ⊕ II 2D Ex tb IIIC T130°C Db

INGRESS PROTECTION

IP67

OPERATING TEMPERATURE

-20°C to +40°C

LAMP LIFE

Approx. 1000 hours

LIGHT OUTPUT

3100 Cd
150 lumens

DIMENSIONS

136mm x 85mm diameter

WEIGHT

0.8kg

CORE PRODUCT INFORMATION

SA LUMIN EX Blast Light 24V c/w 20W halogen bulb, quick release 40mm blast hose clamp, and 20m of braided HOFR cable

Order Code: SABL120A24/ATX/20



SA LUMIN EX Blast Light Spare Protective Lens
Pack of 10

Order Code: SABL/LC



CEAG & STAHL plugs and different cable lengths also available – please contact SA Equip for more details.

See page 26 for our Plug, Socket, and Cable guide.

See pages 142 – 145 for the complete Core Product Directory.



“SA CYCLONE products are brilliant – lightweight, easy to use and amazingly powerful for their size. They are always my first choice.”

Project Manager, Specialist Contractor

HEAT
LIGHT
AIR
POWER

- 92 **20cm Fan**
 - 96 **30cm Fan**
 - 100 **40cm Fan**
 - 104 **Anti-static Ducting & Duct Couplers**
 - 108 **Venturi Air Mover**
-

AIR

To work effectively and safely, you often have to move air. Good air in, bad air out. The SA CYCLONE range of fans, ducting, couplers and adaptors allow you to make an inhospitable, dangerous environment into a safe workplace. And because they're designed as plug-and-play devices, easily moved and installed in minutes precisely where you need them, they can be put to work quickly, without fuss.

The SA CYCLONE range includes Fans, Venturis and a comprehensive selection of ducting and accessories. Thousands of offshore workers, shipbuilders, utilities operatives, chemical maintenance crews and refurb teams around the world rely on the SA CYCLONE range of products to keep them working safely, comfortably and effectively, whatever the conditions.

The SA CYCLONE range gives you breathing space to work – with a direct and tangible financial benefit.

20CM FAN

SAF20



COMPACT, PORTABLE VENTILATION WITH A PHENOMENAL PUNCH

Weighing only 12kg and just 35cm wide, the SA CYCLONE EX 20cm Fan can be moved quickly and easily into the most cramped and restricted space, yet still manages to shift **1660m³ of air per hour**. Built from ultra-tough, anti-static polymer you can quickly connect a 5 or 10 metre duct, with couplers available for longer lengths where required.

20CM FAN SAF20

BENEFITS

- ATEX & IECEx Certified for Zones 1 and 2
- Extremely compact
- Operates on 50 or 60Hz
- Used as blower or exhauster
- Tough and durable
- Lightweight – only 12kg
- Anti-static polymer housing
- Heavy duty motor
- Quick-Couple Canister system available
- Compatible with the SA CYCLONE Anti-static Ducting

You may also need...

Anti-static Ducting & Duct Couplers – see page 104

MDU – see page 116

Transformers – see pages 120 & 124

Splitter Boxes – see page 128



SPECIFICATIONS

CERTIFICATION

II 2 G Ex de IIB T6 Gb

OPERATING TEMPERATURE

-20°C to +40°C

RUN TIME

Continuous

MOTOR TYPE

Heavy duty switched

CABLE LENGTH

10m (or as required)

VOLTAGE OPTIONS

110VAC, 230VAC

FREE AIRFLOW

980cfm (1666m³/hour) – 110V

819cfm (1392m³/hour) – 230V

START UP CURRENT

7 Amps (110V + 230V)

RUN CURRENT

2 Amps (110V)

1.2 Amps (230V)

DIMENSIONS

390mm (h) x 350mm (w) x 350mm (d)

WEIGHT

12.25kg

NOISE LEVEL @ 1 METRE

74dB

CORE PRODUCT INFORMATION

SA CYCLONE EX Portable Fan 20cm 110VAC

c/w CEAG plug and braided cable

Order Code: SAF20/110-EX/CEA



SA CYCLONE EX Portable Fan 20cm 230VAC

c/w CEAG plug and braided cable

Order Code: SAF20/230-EX/CEA



SA CYCLONE EX Portable Fan 20cm 110VAC

c/w ATX plug and braided cable

Order Code: SAF20/110-EX/ATX



SA CYCLONE EX Portable Fan 20cm 230VAC

c/w ATX plug and braided cable

Order Code: SAF20/230-EX/ATX



STAHL connectors and different cable lengths also available – please contact SA Equip for more details.

See page 26 for our Plug, Socket, and Cable guide.

See pages 142 – 145 for the complete Core Product Directory.



30CM FAN

SAF30



WORK FAST IN POTENTIALLY DANGEROUS ENVIRONMENTS

The mid-weight option in the SA CYCLONE range of portable fans, our 30cm model delivers an impressive rate of 4250m³ per hour with a **continuously rated heavy-duty motor**. You can quickly connect to flexible anti-static ducts at 5 or 10 metres – supplied individually in dedicated, easy-to-carry holdalls – or couple to longer duct lengths where necessary. It also incorporates further practical safety features including an **automatic thermal cutout** on the motor.

30CM FAN SAF30

BENEFITS

- ATEX & IECEx Certified for Zones 1 and 2
- High airflow
- Operates on 50 or 60Hz
- Used as blower or exhauster
- Tough and durable
- Lightweight
- Anti-static polymer housing
- Dynamically balanced fan blades
- Heavy duty motor
- Compatible with the SA CYCLONE Anti-static Ducting

You may also need...
Anti-static Ducting & Duct Couplers – see page 104
MDU – see page 116
Transformers – see pages 120 & 124
Splitter Boxes – see page 128



SPECIFICATIONS

CERTIFICATION

II 2 G Ex de IIB T6 Gb

OPERATING TEMPERATURE

-20°C to +40°C

RUN TIME

Continuous

MOTOR TYPE

Heavy duty switched

FAN CASING

Anti-static glass reinforced ABS

CABLE LENGTH

10m (or as required)

VOLTAGE OPTIONS

110VAC, 230VAC (50/60Hz)

FREE AIRFLOW

2118cfm (3600m³/hour) @ 50Hz
 2500cfm (4250m³/hour) @ 60Hz

START UP CURRENT

37 Amps (110V)
 27 Amps (230V)

RUN CURRENT

7.2 Amps (110V)
 3 Amps (230V)

DIMENSIONS

410mm (h) x 410mm (d) x 380mm (w)

WEIGHT

20kg

NOISE LEVEL @ 1 METRE

89dB

CORE PRODUCT INFORMATION

SA CYCLONE EX Portable Fan 30cm 110VAC
 c/w CEAG plug and braided cable
Order Code: SAF30/110-EX/CEA



SA CYCLONE EX Portable Fan 30cm 230VAC
 c/w CEAG plug and braided cable
Order Code: SAF30/230-EX/CEA



SA CYCLONE EX Portable Fan 30cm 110VAC
 c/w ATX plug and braided cable
Order Code: SAF30/110-EX/ATX



SA CYCLONE EX Portable Fan 30cm 230VAC
 c/w ATX plug and braided cable
Order Code: SAF30/230-EX/ATX



STAHL connectors and different cable lengths also available – please contact SA Equip for more details.

See page 26 for our Plug, Socket, and Cable guide.

See pages 142 – 145 for the complete Core Product Directory.



40CM FAN

SAF40



HIGH POWER, LOW WEIGHT

The 40cm model is the big brother in our range of portable EX-certified fans. But despite a phenomenal maximum airflow of 7580m³ per hour, it still **weighs only 28kg** – so you can quickly and easily put it where you need it. Built from ultra-tough anti-static polymer and fitted with aluminium turbine fan blades, the SA CYCLONE EX 40cm Fan will provide reliable extraction or ventilation in the most demanding and potentially dangerous environments. Where you need to ventilate a really big area, **you can stack several units**. 5 and 10 metre ducts are available, with couplers allowing connection to longer ducts if you need them.

40CM FAN SAF40

BENEFITS

- ATEX & IECEx Certified for Zones 1 and 2
- High airflow
- Operates on 50 or 60Hz
- Used as blower or exhauster
- Tough and durable
- Lightweight
- Stackable
- Anti-static polymer housing
- Dynamically balanced fan blades
- Compatible with the SA CYCLONE Anti-static Ducting

You may also need...

Anti-static Ducting & Duct Couplers – see page 104

MDU – see page 116

Transformers – see pages 120 & 124

Splitter Boxes – see page 128



SPECIFICATIONS

CERTIFICATION

II 2 G Ex de IIB T6 Gb

OPERATING TEMPERATURE

-20°C to +40°C

RUN TIME

Continuous

MOTOR TYPE

Heavy duty switched

FAN CASING

Anti-static glass reinforced ABS

CABLE LENGTH

10m (or as required)

VOLTAGE OPTIONS

110VAC, 230VAC (50/60Hz)

FREE AIRFLOW

3765cfm (6400m³/hour) @ 50Hz

4459cfm (7580m³/hour) @ 60Hz

START UP CURRENT

80 Amps (110V)

40 Amps (230V)

RUN CURRENT

15 Amps (110V)

8 Amps (230V)

DIMENSIONS

480mm (h) x 460mm (w) x 410mm (d)

WEIGHT

28kg

NOISE LEVEL @ 1 METRE

90.2dB

CORE PRODUCT INFORMATION

SA CYCLONE EX Portable Fan 40cm 110VAC

c/w CEAG plug and braided cable

Order Code: SAF40HP/110-EX/CEA



SA CYCLONE EX Portable Fan 40cm 230VAC

c/w CEAG plug and braided cable

Order Code: SAF40HP/230-EX/CEA



SA CYCLONE EX Portable Fan 40cm 110VAC

c/w ATX plug and braided cable

Order Code: SAF40HP/110-EX/ATX



SA CYCLONE EX Portable Fan 40cm 230VAC

c/w ATX plug and braided cable

Order Code: SAF40HP/230-EX/ATX



STAHL connectors and different cable lengths also available – please contact SA Equip for more details.

See page 26 for our Plug, Socket, and Cable guide.

See pages 142 – 145 for the complete Core Product Directory.





ANTI-STATIC DUCTING & DUCT COUPLERS

SAFD



GOOD AIR IN, BAD AIR OUT – YOU'RE IN CONTROL

With our superbly flexible, adaptable ducting and couplers you can quickly design and **implement a system to your precise requirements**, in virtually any environment. Built from anti-static reinforced polymer with integrated steel helix wire for strength, this ducting is ATEX approved for Zones 1 and 2. It's been **tested to extremes in independent laboratory trials**, and passed both anti-static and flammability tests. Designed to work seamlessly with both the SA CYCLONE EX Fans and the SA FLEXIHEAT EX Heaters.

ANTI-STATIC DUCTING & DUCT COUPLERS

SAFD

BENEFITS

- Anti-static
- Flame retardant
- High quality construction
- Various lengths and widths of Ducting available
- Very short lead times
- Straight, Y-piece, and reducing couplers available
- Compatible with the SA FLEXIHEAT Heater
- Compatible with the SA CYCLONE Fans



SPECIFICATIONS

DUCT FITTING
Heavy duty tensioning strap

DUCT CONSTRUCTION
Anti-static vinyl coated polyester fabric with integrated steel helix wire

DUCT DIAMETERS
20cm, 30cm, 40cm

DUCT LENGTHS
5m, 10m

DUCT WEIGHTS
20cm(W) x 10m(L) – 8.2kg
30cm(W) x 5m(L) – 8kg
30cm(W) x 10m(L) – 16kg
40cm(W) x 5m(L) – 10.3kg
40cm(W) x 10m(L) – 19.8kg

STRAIGHT COUPLER & Y-PIECE MATERIAL
Stainless steel with location ribs, anti-slip bands, and safety edging

STRAIGHT COUPLER & Y-PIECE DIAMETERS
20cm, 30cm, 40cm

CORE PRODUCT INFORMATION

SA CYCLONE Anti-static Duct 20cmØ x 10m long c/w carry bag
Order Code: SAFD20/10-EX



SA CYCLONE Anti-static Duct 30cmØ x 5m long c/w carry bag
Order Code: SAFD30/05-EX



SA CYCLONE Anti-static Duct 30cmØ x 10m long c/w carry bag
Order Code: SAFD30/10-EX



SA CYCLONE Anti-static Duct 40cmØ x 5m long c/w carry bag
Order Code: SAFD40/05-EX



SA CYCLONE Anti-static Duct 40cmØ x 10m long c/w carry bag
Order Code: SAFD40/10-EX



SA CYCLONE Straight Duct Coupler 20cmØ
Order Code: SAFD20/CU



SA CYCLONE Straight Duct Coupler 30cmØ
Order Code: SAFD30/CU



SA CYCLONE Straight Duct Coupler 40cmØ
Order Code: SAFD40/CU



SA CYCLONE Y-Coupler 30cmØ
Order Code: SAFD30/YC



See pages 142 – 145 for the complete Core Product Directory.

You may also need...
Fans – see pages 92, 96 & 100

VENTURI AIR MOVER

SAV



POWERFUL, SIMPLE AND TRULY PORTABLE

The market-leading air-driven ventilator, it has no moving parts, and instead uses high velocity compressed air to create a pulling action and a subsequent large volume displacement through a diffuser, connecting to ducting or hoses where required. The smallest unit **weighs just 2kg** – not much more than a large torch. With no moving parts, our Venturi units are exceptionally reliable and require virtually no maintenance.

VENTURI AIR MOVER

SAV

BENEFITS

- Powered by compressed air or saturated steam
- Tough and durable
- Anti-static polymer housing
- Highly reliable
- Minimal maintenance
- Cylindrical mixing chamber delivers higher induction ratios
- Fits standard API openings
- Earth lead and clamp available
- 3 sizes available – 13cm, 20cm, 30cm
- Compatible with the SA CYCLONE Anti-static Ducting

You may also need...
Anti-static Ducting & Duct Couplers – see page 104
Fans – see pages 92, 96 & 100



SPECIFICATIONS

OPERATING TEMPERATURE
 -20°C to +40°C

RUN TIME
 Continuous

FAN TYPE
 Venturi Cone

FAN CASING
 Anti-static Polyethylene

POWER SOURCE
 Compressed Air / Saturated Steam

MAXIMUM PRESSURE
 100psi/6.895 bar

FREE AIRFLOW @ 40PSIG
 810cfm (1377m³/hour) – 13cm
 1000cfm (1702m³/hour) – 20cm
 2740cfm (4658m³/hour) – 30cm

FREE AIRFLOW @ 80PSIG
 1180cfm (2006m³/hour) – 13cm
 1439cfm (2446m³/hour) – 20cm
 3329cfm (5659m³/hour) – 30cm

AIR CONSUMPTION @ 40PSIG
 22cfm (37m³/hour) – 13cm & 20cm
 59cfm (100m³/hour) – 30cm

AIR CONSUMPTION @ 80PSIG
 58cfm (99m³/hour) – 13cm & 20cm
 124cfm (211m³/hour) – 30cm

INLET CONNECTION
 Claw coupling (or as required)
 13cm & 20cm – 1/2" NPT
 30cm – 1" NPT

FLANGE
 API 3" (6.56" BC) – 13cm & 20cm
 API 6" (10.5" BC) – 30cm

WEIGHT
 2kg – 13cm
 3kg – 20cm
 6.8kg – 30cm

DIMENSIONS
 410mm x 130mm Ø – 13cm
 840mm x 200mm Ø – 20cm
 1060mm x 300mm Ø – 30cm

CORE PRODUCT INFORMATION

SA CYCLONE Venturi Air Mover 13cm (3" flange)
Order Code: SAV13/AP



SA CYCLONE Venturi Air Mover 20cm (3" flange)
Order Code: SAV20/AP



SA CYCLONE Venturi Air Mover 30cm (6" flange)
Order Code: SAV30/AP



SA CYCLONE Venturi Air Mover 30cm (6" flange)
 c/w 30cm Duct Adaptor
Order Code: SAV30/DA30



SA CYCLONE Venturi Earth Lead & Clamp
Order Code: SAV/EC/AP



See pages 142 – 145 for the complete Core Product Directory.



HEAT
LIGHT
AIR

POWER

—
*“The MDU is absolutely brilliant.
I like the simple way it works.”*

Manager of Major Contractor for North Sea

POWER

- 116 **Mains Distribution Unit**
 - 120 **3.8KVA Transformer**
 - 124 **400VA Transformer**
 - 128 **Splitter Box**
 - 132 **Extension Reel**
 - 136 **Extension Lead**
-

POWER

SA Equip lighting, heat and ventilation products depend on a safe and dependable source of electricity, so developing a range of EX safe and certified power distribution products was an early priority for our business. Our Cables, Splitters and Transformers offer a unique solution for use in potentially hazardous environments.

Exceptionally sturdy, stable, lightweight and portable, the SA POWERNET range features marine-grade steel and practically indestructible composite for decades of maintenance-free service in the most demanding of conditions.

MAINS DISTRIBUTION UNIT

PNDU



POWER WHERE IT'S NEEDED – WITH NO HOT-WORK PERMIT OR STANDBY MAN

The first link between your power supply and your temporary system, our MDU can connect to welding sockets to **greatly increase your power supply options**, putting power where you need it to complete the task in hand. By avoiding the need for hot work permits and a standby man, **it can pay for itself in days**. A true plug-and-play system, our MDU connects to a 440V 63A supply, splitting the power to 32A or 16A sockets. It's also extremely portable, weighing in at 55kg, and with a 10m input cable it can be easily moved by personnel without the need for lifting equipment.

MAINS DISTRIBUTION UNIT

PNDU

BENEFITS

- ATEX Certified for Zones 1 and 2 (gas)
- Tough and durable
- Full MCB protection
- Easily transportable
- Weighs only 55kg including cable
- Waterproof and dustproof
- Easy maintenance
- Internal safety shield

You may also need...

Heaters – see page 32

Fans – see pages 92, 96 & 100

Transformers – see pages 120 & 124



SPECIFICATIONS

CERTIFICATION

Ex II 2 G Ex de IIC T6

INGRESS PROTECTION

IP66

OPERATING TEMPERATURE

-15°C to +40°C

INPUT CABLE

4x10mm Braided (HOFR)

VOLTAGE

440V 3 Phase

SWITCHING

Main incoming isolator.
Individual isolator on each socket

PROTECTION

Individual MCB on each socket

DIMENSIONS

1150mm (h) x 680mm (w) x 600mm (d)

WEIGHT (INCL. CABLE)

55kg

CORE PRODUCT INFORMATION

SA POWERNET EX MDU 440V 2-way c/w CEAG plug, 2 x 32A 4P CEAG sockets, and 10m of HOFR braided cable
Order Code: PNDU440/10-2EX/CEA



SA POWERNET EX MDU 440V 3-way c/w CEAG plug, 1 x 32A 4P & 2 x 16A 4P CEAG sockets, and 10m of HOFR braided cable
Order Code: PNDU440/10-12EX/CEA



SA POWERNET EX MDU 440V 4-way c/w CEAG plug, 4 x 16A 4P CEAG sockets, and 10m of HOFR braided cable
Order Code: PNDU440/10-4EX/CEA



Different cable lengths also available – please contact SA Equip for more details.

See page 26 for our Plug, Socket, and Cable guide.

See pages 142 – 145 for the complete Core Product Directory.



3.8KVA TRANSFORMER

PNLT



PROVIDING 110V OR 230V POWER SAFELY TO YOUR WORK AREA

The new SA POWERNET PNLT Transformer is an ATEX approved (Zones 1 and 2, 21 and 22) Transportable Transformer with a capacity of no less than 3.8KVA. Continuously rated, the PNLT will **deliver power safely wherever you need it**. It is a thoroughbred SA product that has been painstakingly developed, to be highly durable yet extremely easy to use. Transportation is simple with a wraparound protective marine grade stainless steel frame, fork lift points and certified lifting points. Weighing in at under 100kgs and developed to fit two on a Euro pallet, this unit is highly compact.

3.8KVA TRANSFORMER

PNLT

BENEFITS

- ATEX & IECEx Certified for Zones 1 and 2 (gas), 21 and 22 (dust)
- 3.8KVA continuously rated
- Safe construction
- Dynamic load tested
- Suitable for use down to -40°C
- Tough and durable
- Compact and stable
- Waterproof and dustproof
- Integrated storage for 10m of supply cable
- Easy maintenance
- MCB and RCD Protection
- Certified Transportable

Compatible with...

SA LUMIN – our lighting range

SA POWERNET – our range of MDU, Transformers, Splitter Boxes, and Extension Leads

SA CYCLONE – our range of Fans

SA FLEXIHEAT – our range of Pipe Heating Jackets



SPECIFICATIONS

CERTIFICATION

Ex II 2 G D
Ex db eb IIC T4 Gb
Ex tb IIIC T135°C Db

INGRESS PROTECTION

IP66

OPERATING TEMPERATURE

-40°C to +40°C

RATING

3800VA

DIMENSIONS

760mm (w) x 580mm (d) x 760mm (h)

WEIGHT

90kg approx.

INPUT CABLE

10m HOFR (or as required)

PNLT230110CEA

Input 230V 16A CEAG Plug
Input Protection 32A MCB
Output 110V CTE 4 x 16A CEAG Sockets
Output Protection 2 x 13A MCB B Type, 30mA RCD

PNLT440110CEA

Input 440V 64A 4P CEAG Plug
Input Protection 16A Fuse
Output 110V CTE 4 x 16A CEAG Sockets
Output Protection 2 x 16A MCB B Type, 30mA RCD

PNLT440230CEA

Input 440V 64A 4P CEAG Plug
Input Protection 32A MCB
Output 230V 4 x 16A CEAG Sockets
Output Protection 1 x 16A MCB B Type, 30mA RCD

CORE PRODUCT INFORMATION

SA POWERNET EX 3.8KVA Transformer
4-way 230V-110V CTE
Order Code: PNLT230110CEA



SA POWERNET EX 3.8KVA Transformer
4-way 440V-110V CTE
Order Code: PNLT440110CEA



SA POWERNET EX 3.8KVA Transformer
4-way 440V-230V
Order Code: PNLT440230CEA



Different input voltages, connectors and cable lengths are also available – please contact SA Equip for more details.

See page 26 for our Plug, Socket, and Cable guide.

See pages 142 – 145 for the complete Core Product Directory.



400VA TRANSFORMER

TRA



COMPACT, RUGGED, INCREDIBLY TOUGH

Our SA POWERNET EX 400VA Transformer comprises a composite box mounted via shock absorbers onto a marine-grade steel frame, with a special internal chassis securing the internal components. The result is a **phenomenally rugged unit**, but with no compromise on portability – at **only 17kg and 560mm wide**, it'll go anywhere you need it. A range of voltage and output options are available, as well as a Centre Tapped to Earth variant, it's supplied fully tested and ready for use.

400VA TRANSFORMER TRA

BENEFITS

- ATEX Certified for Zones 1 and 2 (gas), 21 and 22 (dust)
- Portable, tough, and durable
- Compact and lightweight
- Waterproof and dustproof
- Fuse protected
- Compatible with the SA LUMIN Worklights
- Fast delivery times

You may also need...
Standard LED Worklights – see pages 60 & 64
Emergency LED Worklight – see page 68
MDU – see page 116
Splitter Boxes – see page 128
Extension Leads – see page 136
Vessel Entry Kits – see pages 63, 67 & 79



SPECIFICATIONS

CERTIFICATION

Ex II 2 G D
 Ex de IIC T4 – T5
 Ex tD A21 IP66 T135°C – T100°C

INGRESS PROTECTION

IP66

OPERATING TEMPERATURE

-20°C to +40°C

RATING

400VA

INPUT VOLTAGE

110VAC (1 x 16A Plug),
 230VAC (1 x 16A Plug)

OUTPUT VOLTAGE

24VAC (4 x Socket outlets),
 42VAC (4 x Socket outlets),
 110VAC (4 x Socket outlets)

DIMENSIONS

560mm (w) x 460mm (d) x 300mm (h)

WEIGHT

17kg (without cable)

CABLE LENGTH

15m (or as required)

CORE PRODUCT INFORMATION

SA POWERNET EX Transformer 4-way 230-24V 400VA
 c/w 1 x 16A CEAG plug, 4 x ATX sockets, and 15m of
 HOFR braided cable

Order Code: TRA23024/400-4EX/CEA



SA POWERNET EX Transformer 4-way 110-24V 400VA
 c/w 1 x 16A CEAG plug, 4 x ATX sockets, and 15m of
 HOFR braided cable

Order Code: TRA11024/400-4EX/CEA



SA POWERNET EX Transformer CTE 4-way 230-110V 400VA
 c/w 1 x 16A CEAG plug, 4 x CEAG sockets, and 15m of
 HOFR braided cable

Order Code: TRAC230110/C400-4EX/CEA



SA POWERNET EX Transformer 4-way 230-42V 400VA
 c/w 1 x 16A CEAG plug, 4 x CEAG sockets, and 15m of
 HOFR braided cable

Order Code: TRA23042/C400-4EX/CEA



STAHL connectors and different cable lengths also available –
 please contact SA Equip for more details.

See page 26 for our Plug, Socket, and Cable guide.

See pages 142 – 145 for the complete Core Product Directory.



SPLITTER BOX

PNSB



ACHIEVE MORE IN LESS TIME

The SA POWERNET EX Splitter Box safely provides four 16A socket outlets in any environment. The rugged, waterproof and dustproof design makes our box practically indestructible, and it's supplied ready for use in full **'plug-and-play'** state. Available in a range of voltage options, and usually available for next-day delivery.

SPLITTER BOX

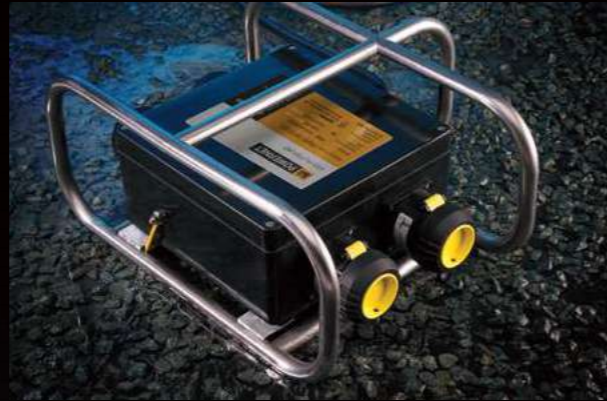
PNSB

BENEFITS

- ATEX Certified for Zones 1 and 2 (gas), 21 and 22 (dust)
- Tough and durable
- Fast delivery times
- Waterproof and dustproof
- Compatible with SA lighting systems

You may also need...

- **Standard LED Worklights** – see pages 60 & 64
- **Emergency LED Worklight** – see page 68
- **Transformers** – see pages 120 & 124
- **Extension Leads** – see page 136



SPECIFICATIONS

CERTIFICATION

Ex II 2 G D
Ex de IIC T6
Ex tD A21 IP66 T85°C

CERTIFICATION (WITH STAHL SOCKETS)

Ex II 2 G
Ex de IIC T6

INGRESS PROTECTION

IP66

OPERATING TEMPERATURE

-20°C to +40°C

VOLTAGE

110VAC, 230VAC

INPUT

1 x 16A Plug

OUTPUT

4 x 16A Socket Outlets

DIMENSIONS

450mm (w) x 450mm (d) x 200mm (h)

WEIGHT

6.6kg (without cable)

CABLE LENGTH

15m (or as required)

CORE PRODUCT INFORMATION

SA POWERNET EX Splitter Unit 4-way 110V
c/w 1 x 16A CEAG plug, 4 x 16A CEAG sockets,
and 15m of braided HOFR cable
Order Code: PNSB110/15-4EX/CEA



SA POWERNET EX Splitter Unit 4-way 230V
c/w 1 x 16A CEAG plug, 4 x 16A CEAG sockets,
and 15m of braided HOFR cable
Order Code: PNSB230/15-4EX/CEA



SA POWERNET EX Splitter Unit 4-way 110V
c/w 1 x 16A STAHL plug, 4 x 16A STAHL sockets,
and 15m of braided HOFR cable
Order Code: PNSB110/15-4EX/STA



SA POWERNET EX Splitter Unit 4-way 230V
c/w 1 x 16A STAHL plug, 4 x 16A STAHL sockets,
and 15m of braided HOFR cable
Order Code: PNSB230/15-4EX/STA



ATX connectors and different cable lengths also available – please contact SA Equip for more details.

See page 26 for our Plug, Socket, and Cable guide.

See pages 142 – 145 for the complete Core Product Directory.



EXTENSION REEL

PNER



THE WORLD'S FIRST 'OFF THE SHELF' EXTENSION REEL

Designed and built to withstand the most demanding conditions, the SA POWERNET EX Extension Reel is highly portable, stable, waterproof and dustproof, and comes in **a wide range of variants** accommodating different plug and socket combinations, cable types and voltages.

EXTENSION REEL PNER

BENEFITS

- ATEX Certified for Zones 1 and 2 (gas), 21 and 22 (dust)
- Highly portable
- Tough stainless steel construction
- Waterproof and dustproof
- Compatible with SA LUMIN Worklights
- Large number of variants available

You may also need...
Standard LED Worklights – see pages 60 & 64
Emergency LED Worklight – see page 68
Transformers – see pages 120 & 124
Splitter Boxes – see page 128



SPECIFICATIONS

CERTIFICATION

Ex II 2 G D
 Ex de IIC T5 Gb
 Ex tb IIIC T100°C Db IP66

INGRESS PROTECTION

IP66

OPERATING TEMPERATURE

-20°C to +40°C

VOLTAGE

110VAC, 230VAC

INPUT

1 x 16A Plug

OUTPUT

1 x 16A Socket

DIMENSIONS

490mm (h) x 390mm (w) x 400mm (d)

WEIGHT

16.2kg (with HOFr cable)

CABLE LENGTH

25m (or as required)

CORE PRODUCT INFORMATION

SA POWERNET EX Extension Reel 110V
 c/w 1 x 16A CEAG plug, 1 x 16A CEAG socket,
 and 25m of braided HOFr cable
Order Code: PNER110EX/25HRE/CEA



SA POWERNET EX Extension Reel 230V
 c/w 1 x 16A CEAG plug, 1 x 16A CEAG socket,
 and 25m of braided HOFr cable
Order Code: PNER230EX/25HRE/CEA



ATX & STAHL connectors, different cable lengths and types are also available in 24V and 42V versions – please contact SA Equip for more details.

See page 26 for our Plug, Socket, and Cable guide.

See pages 142 – 145 for the complete Core Product Directory.



EXTENSION LEAD

PNEL



A COST-EFFECTIVE SOLUTION, WHEREVER YOU NEED POWER

Built to the highest standards for exceptional reliability, the SA POWERNET EX Extension Leads deliver **power to hazardous areas effectively and with minimum hassle**. ATEX compliant, tough and durable, compatible with all SA lighting equipment and supplied ready to use. All leads are high performance cables and there are a wide variety of options available.

EXTENSION LEAD PNEL

BENEFITS

- ATEX Certified for Zones 1 and 2 (gas), 21 and 22 (dust)
- Tough and durable
- Fast delivery times
- Waterproof and dustproof
- Compatible with SA LUMIN Worklights

You may also need...
Standard LED Worklights – see pages 60 & 64
Emergency LED Worklight – see page 68
Transformers – see pages 120 & 124
Splitter Boxes – see page 128



SPECIFICATIONS

CERTIFICATION

Ex II 2G D
 Ex de IIC T5 Gb
 Ex tb IIIC T100°C Db IP66

INGRESS PROTECTION

IP66

OPERATING TEMPERATURE

-20°C to +40°C

VOLTAGE

24VAC, 42VAC, 110VAC,
 230VAC, 400VAC

INPUT

1 x 16A Plug
 (32A on 400VAC)

OUTPUT

1 x 16A Mobile Socket
 (32A on 400VAC)

WEIGHT

6kg (HOFR) – 15m Extension Lead

CORE PRODUCT INFORMATION

SA POWERNET EX Extension Lead 24V
 c/w 1 x 16A ATX plug, 1 x 16A ATX socket
 and 20m of braided HOFR cable (HRE)
 (Operating Temp -15°C to +40°C)
Order Code: PNEL24EX20HRE/ATX16/3P



SA POWERNET EX Extension Lead 110V
 c/w 1 x 16A CEAG plug, 1 x 16A CEAG socket,
 and 15m of braided HOFR cable
Order Code: PNEL110EX15HRE/CEA16/3P



SA POWERNET EX Extension Lead 110V
 c/w 1 x 16A CEAG plug, 1 x 16A CEAG socket,
 and 25m of braided HOFR cable
Order Code: PNEL110EX25HRE/CEA16/3P



SA POWERNET EX Extension Lead 230V
 c/w 1 x 16A CEAG plug, 1 x 16A CEAG socket,
 and 15m of braided HOFR cable
Order Code: PNEL230EX15HRE/CEA16/3P



SA POWERNET EX Extension Lead 230V
 c/w 1 x 16A CEAG plug, 1 x 16A CEAG socket,
 and 25m of braided HOFR cable
Order Code: PNEL230EX25HRE/CEA16/3P



SA POWERNET EX Extension Lead 400V
 c/w 1 x 32A 4P CEAG plug, 1 x 32A 4P CEAG socket,
 and 25m of braided HOFR cable (HR)
Order Code: PNEL400EX25HR/CEA32/4P



ATX & STAHL connectors and other cable types and other voltages
 also available – please contact SA Equip for more details.

See page 26 for our Plug, Socket, and Cable guide.

See pages 142 – 145 for the complete Core Product Directory.





CORE PRODUCT DIRECTORY



CORE PRODUCT DIRECTORY

HEAT /

HEATER

SA FLEXIHEAT EX Heater 15kW 400V (+/- 10%) 3 Ph 50/60 Hz c/w 4P 32A CEAG plug and 10m of braided cable
Order Code: SAPH15/400CEA

PIPE HEATING JACKETS

SA FLEXIHEAT EX 400mm Long Pipe Heating Jacket 110VAC Linkable 80W 0.96A for use with pipes up to 150mm dia. c/w CEAG plug & coupler and braided cable
Order Code: SAFH150P/400C110CEA

SA FLEXIHEAT EX 400mm Long Pipe Heating Jacket 230VAC Linkable 80W 0.46A for use with pipes up to 150mm dia. c/w CEAG plug & coupler and braided cable
Order Code: SAFH150P/400C230CEA

SA FLEXIHEAT EX 700mm Long Pipe Heating Jacket 110VAC Linkable 104W 1.25A for use with pipes up to 150mm dia. c/w CEAG plug & coupler and braided cable
Order Code: SAFH150P/700C110CEA

SA FLEXIHEAT EX 700mm Long Pipe Heating Jacket 230VAC Linkable 104W 0.60A for use with pipes up to 150mm dia. c/w CEAG plug & coupler and braided cable
Order Code: SAFH150P/700C230CEA

SA FLEXIHEAT EX 1000mm Long Pipe Heating Jacket 110VAC Linkable 72W 0.87A for use with pipes up to 50mm dia. c/w CEAG plug & coupler and braided cable
Order Code: SAFH050P/1000C110CEA

SA FLEXIHEAT EX 1000mm Long Pipe Heating Jacket 230VAC Linkable 72W 0.40A for use with pipes up to 50mm dia. c/w CEAG plug & coupler and braided cable
Order Code: SAFH050P/1000C230CEA

HEATBOX

SA FLEXIHEAT EX HeatBox
Order Code: SAHB/2-AP



LIGHT /

LED TORCH

SA LUMIN EX LED Torch c/w light sensor, wrist strap, and 4 x AAA/RO3 6V batteries
Order Code: EX150

LED TASKLIGHT

SA LUMIN EX LED Rechargeable Tasklight offering 6 hours continuous use c/w charger, mains supply lead, & car socket lead
Order Code: SATL100

SA LUMIN EX LED Rechargeable Tasklight Set c/w 5 Tasklights, 5-Way Charging Rack, & Mains Supply Lead
Order Code: SATL100/CR5

SA LUMIN Tasklight Holster enabling hands-free operation of the Tasklight c/w adjustable strap
Order Code: SATL/HR

SA LUMIN Tasklight Magnetic Bracket c/w anti-static strap and stainless steel spring-loaded buckle
Order Code: SATL/MB

SA LUMIN Tasklight Stabilising Base Unit
Order Code: SATL/BU

LED TASKLIGHT KIT

SA LUMIN EX LED Tasklight Kit 1 c/w: 1 x SA LUMIN EX LED Tasklight, 1 x Leather Holster, 1 x Magnetic Bracket, 1 x Base Unit, 1 x Charger, 1 x Charging Lead 200-250VAC, 1 x Vehicle Charging Lead 12-14VDC, 1 x SA LUMIN EX LED Torch
Order Code: SATL100/KIT1

SA LUMIN EX LED Tasklight Kit 2 c/w: 1 x SA LUMIN EX LED Tasklight, 1 x Leather Holster, 1 x Magnetic Bracket, 1 x Charger, 1 x Charging Lead 200-250VAC, 1 x Vehicle Charging Lead 12-14VDC
Order Code: SATL100/KIT2

LED WORKLIGHT 100

SA LUMIN EX LED Worklight 100, 24W 24VAC/DC c/w ATX plug and braided cable
Order Code: SA100A24ATX

SA LUMIN EX LED Worklight 100, 24W 42VAC c/w CEAG plug and braided cable
Order Code: SA100A42CEA

SA LUMIN EX LED Worklight 100, 24W 110VAC Linkable, c/w CEAG plug & coupler and braided cable
Order Code: SA100C110CEA

SA LUMIN EX LED Worklight 100, 24W 230VAC Linkable, c/w CEAG plug & coupler and braided cable
Order Code: SA100C230CEA

SA LUMIN Worklight Plain Bracket
Order Code: SAFB090

SA LUMIN Worklight Magnetic Bracket
Order Code: SAFB100

SA LUMIN Worklight Magnetic Swivel Bracket
Order Code: SAFB105

SA LUMIN Worklight Scaffold Bracket
Order Code: SAFB110

SA LUMIN Worklight Antistatic Protective Film
Order Code: SASP113

SA LUMIN EX LED Worklight 100 Vessel Entry Kit c/w 1 x 110V-24V Transformer with 15m of braided cable and CEAG input plug, 4 x SA LUMIN EX LED Worklight 100, 24V each with 20m of braided cable and ATX plug
Order Code: SAVK100/244-110/CEA

SA LUMIN EX LED Worklight 100 Vessel Entry Kit c/w 1 x 230V-24V Transformer with 15m of braided cable and CEAG input plug, 4 x SA LUMIN EX LED Worklight 100, 24V each with 20m of braided cable and ATX plug
Order Code: SAVK100/244-230/CEA

LED WORKLIGHT 200

SA LUMIN EX LED Worklight 200, 48W 24VAC/DC c/w ATX plug and braided cable
Order Code: SA200A24ATX

SA LUMIN EX LED Worklight 200, 48W 42VAC/DC c/w CEAG plug and braided cable
Order Code: SA200A42CEA

SA LUMIN EX LED Worklight 200, 48W 110VAC/DC Linkable, c/w CEAG plug & coupler and braided cable
Order Code: SA200C110CEA

SA LUMIN EX LED Worklight 200, 48W 230VAC/DC Linkable, c/w CEAG plug & coupler and braided cable
Order Code: SA200C230CEA

SA LUMIN Worklight Plain Bracket
Order Code: SAFB090

CORE PRODUCT DIRECTORY

SA LUMIN Worklight Magnetic Bracket
Order Code: SAFB100

SA LUMIN Worklight Magnetic Swivel Bracket
Order Code: SAFB105

SA LUMIN Worklight Scaffold Bracket
Order Code: SAFB110

SA LUMIN Worklight Antistatic Protective Film
Order Code: SASP114

SA LUMIN EX LED Worklight 200 Vessel Entry Kit c/w 1 x 110V-24V Transformer with 15m of braided cable and CEAG input plug, 4 x SA LUMIN EX LED Worklight 200, 24V each with 20m of braided cable and ATX plug
Order Code: SAVK200/244-110/CEA

SA LUMIN EX LED Worklight 200 Vessel Entry Kit c/w 1 x 230V-24V Transformer with 15m of braided cable and CEAG input plug, 4 x SA LUMIN EX LED Worklight 200, 24V each with 20m of braided cable and ATX plug
Order Code: SAVK200/244-230/CEA

LED EMERGENCY WORKLIGHT

SA LUMIN EX LED Emergency Worklight, 32W 24VAC/VDC, c/w ATX plug and 10m of braided cable
Order Code: SAE100A24ATX

SA LUMIN EX LED Emergency Worklight, 32W 110VAC/VDC, Linkable c/w CEAG plug & coupler and 5m of braided cable
Order Code: SAE100C110CEA

SA LUMIN EX LED Emergency Worklight, 32W 110VAC/VDC, Linkable c/w ATX plug and 5m of braided cable
Order Code: SAE100C110ATX

SA LUMIN Worklight Plain Bracket
Order Code: SAFB090

SA LUMIN Worklight Magnetic Bracket
Order Code: SAFB100

SA LUMIN Worklight Magnetic Swivel Bracket
Order Code: SAFB105

SA LUMIN Worklight Scaffold Bracket
Order Code: SAFB110

SA LUMIN Worklight Antistatic Protective Film
Order Code: SASP114

LED FLOODLIGHT

SA LUMIN EX LED Floodlight 68W 24VAC c/w ATX plug and braided cable
Order Code: SAFL300A24ATX

SA LUMIN EX LED Floodlight 68W 42VAC c/w CEAG plug and braided cable
Order Code: SAFL300A42CEA

SA LUMIN EX LED Floodlight 68W 110VAC c/w CEAG plug and braided cable
Order Code: SAFL300A110CEA

SA LUMIN EX LED Floodlight 68W 230VAC c/w CEAG plug and braided cable
Order Code: SAFL300A230CEA

SA LUMIN EX LED Floodlight 68W 110VAC Linkable, c/w CEAG plug and braided cable
Order Code: SAFL300C110CEA

SA LUMIN EX LED Floodlight 68W 230VAC Linkable, c/w CEAG plug and braided cable
Order Code: SAFL300C230CEA

SA LUMIN Floodlight Scaffold Bracket
Order Code: SAFL/SB

SA LUMIN Floodlight Protective Shield
Order Code: SAFL/PS

SA LUMIN Floodlight Protective Film
Order Code: SAFL/PF

SA LUMIN Floodlight Tripod Stand
Order Code: SAFL/TS

SA LUMIN Floodlight Tripod Stand
Order Code: SAFL/TS

LED COMPACT FLOODLIGHT

SA LUMIN EX LED Compact Floodlight 34W 24VAC/DC, c/w ATX plug and braided cable
Order Code: SAFL200A24ATX

SA LUMIN EX LED Compact Floodlight 34W 42VAC/DC, c/w CEAG plug and braided cable
Order Code: SAFL200A42CEA

SA LUMIN EX LED Compact Floodlight 34W 110VAC, c/w CEAG plug and braided cable
Order Code: SAFL200A110CEA

SA LUMIN EX LED Compact Floodlight 34W 230VAC, c/w CEAG plug and braided cable
Order Code: SAFL200A230CEA

SA LUMIN Compact Floodlight Scaffold Bracket
Order Code: SAFL/SB

SA LUMIN Compact Floodlight Tripod Stand
Order Code: SAFL/TS

SA LUMIN Compact Floodlight Protective Shield
Order Code: SAFL/PS-C

SA LUMIN Compact Floodlight Protective Film
Order Code: SAFL/PF-C

SA LUMIN EX LED Compact Floodlight Vessel Entry Kit c/w 1 x 110V-24V Transformer with 15m of braided cable and CEAG input plug, 4 x SA LUMIN EX LED Compact Floodlights, 24V each with 20m of braided cable and ATX plug
Order Code: SAVK200F/244-110/CEA

SA LUMIN EX LED Compact Floodlight Vessel Entry Kit c/w 1 x 230V-24V Transformer with 15m of braided cable and CEAG input plug, 4 x SA LUMIN EX LED Compact Floodlights, 24V each with 20m of braided cable and ATX plug
Order Code: SAVK200F/244-230/CEA

UV LED FLOODLIGHT

SA LUMIN EX UV LED Floodlight 68W 24VAC/DC c/w ATX plug and braided cable
Order Code: SAFL350A24ATX

SA LUMIN EX UV LED Floodlight 68W 110VAC c/w CEAG plug and braided cable
Order Code: SAFL350A110CEA

SA LUMIN EX UV LED Floodlight 68W 230VAC c/w CEAG plug and braided cable
Order Code: SAFL350A230CEA

SA LUMIN Floodlight Scaffold Bracket
Order Code: SAFL/SB

SA LUMIN Floodlight Protective Film
Order Code: SAFL/PF

SA LUMIN Floodlight Tripod Stand
Order Code: SAFL/TS

BLAST LIGHT

SA LUMIN EX Blast Light 24V c/w 20W halogen bulb, quick release 40mm blast hose clamp, and 20m of braided HOFRC cable
Order Code: SABL120A24/ATX/20

SA LUMIN EX Blast Light Spare Protective Lens Pack of 10
Order Code: SABL/LC



CORE PRODUCT DIRECTORY

AIR /

20CM FAN

SA CYCLONE EX Portable Fan 20cm 110VAC
c/w CEAG plug and braided cable
Order Code: SAF20/110-EX/CEA

95

SA CYCLONE EX Portable Fan 20cm 230VAC
c/w CEAG plug and braided cable
Order Code: SAF20/230-EX/CEA

95

SA CYCLONE EX Portable Fan 20cm 110VAC
c/w ATX plug and braided cable
Order Code: SAF20/110-EX/ATX

95

SA CYCLONE EX Portable Fan 20cm 230VAC
c/w ATX plug and braided cable
Order Code: SAF20/230-EX/ATX

95

30CM FAN

SA CYCLONE EX Portable Fan 30cm 110VAC
c/w CEAG plug and braided cable
Order Code: SAF30/110-EX/CEA

99

SA CYCLONE EX Portable Fan 30cm 230VAC
c/w CEAG plug and braided cable
Order Code: SAF30/230-EX/CEA

99

SA CYCLONE EX Portable Fan 30cm 110VAC
c/w ATX plug and braided cable
Order Code: SAF30/110-EX/ATX

99

SA CYCLONE EX Portable Fan 30cm 230VAC
c/w ATX plug and braided cable
Order Code: SAF30/230-EX/ATX

99

40CM FAN

SA CYCLONE EX Portable Fan 40cm 110VAC
c/w CEAG plug and braided cable
Order Code: SAF40HP/110-EX/CEA

103

SA CYCLONE EX Portable Fan 40cm 230VAC
c/w CEAG plug and braided cable
Order Code: SAF40HP/230-EX/CEA

103

SA CYCLONE EX Portable Fan 40cm 110VAC
c/w ATX plug and braided cable
Order Code: SAF40HP/110-EX/ATX

103

SA CYCLONE EX Portable Fan 40cm 230VAC
c/w ATX plug and braided cable
Order Code: SAF40HP/230-EX/ATX

103

ANTI-STATIC DUCTING & DUCT COUPLERS

SA CYCLONE Anti-static Duct 20cmØ x 10m long
c/w carry bag
Order Code: SAFD20/10-EX

107

SA CYCLONE Anti-static Duct 30cmØ x 5m long
c/w carry bag
Order Code: SAFD30/05-EX

107

SA CYCLONE Anti-static Duct 30cmØ x 10m long
c/w carry bag
Order Code: SAFD30/10-EX

107

SA CYCLONE Anti-static Duct 40cmØ x 5m long
c/w carry bag
Order Code: SAFD40/05-EX

107

SA CYCLONE Anti-static Duct 40cmØ x 10m long
c/w carry bag
Order Code: SAFD40/10-EX

107

SA CYCLONE Straight Duct Coupler 20cmØ
Order Code: SAFD20/CU

107

SA CYCLONE Straight Duct Coupler 30cmØ
Order Code: SAFD30/CU

107

SA CYCLONE Straight Duct Coupler 40cmØ
Order Code: SAFD40/CU

107

SA CYCLONE Y-Coupler 30cmØ
Order Code: SAFD30/YC

107

VENTURI AIR MOVER

SA CYCLONE Venturi Air Mover 13cm [3" flange]
Order Code: SAV13/AP

111

SA CYCLONE Venturi Air Mover 20cm [3" flange]
Order Code: SAV20/AP

111

SA CYCLONE Venturi Air Mover 30cm [6" flange]
Order Code: SAV30/AP

111

SA CYCLONE Venturi Air Mover 30cm [6" flange]
c/w 30cm Duct Adaptor
Order Code: SAV30/DA30

111

SA CYCLONE Venturi Earth Lead & Clamp
Order Code: SAV/EC/AP

111



CORE PRODUCT DIRECTORY

POWER /

MAINS DISTRIBUTION UNIT

SA POWERNET EX MDU 440V 2-way
c/w CEAG plug, 2 x 32A 4P CEAG sockets,
and 10m of HOFBR braided cable
Order Code: PNDU440/10-2EX/CEA

119

SA POWERNET EX MDU 440V 3-way
c/w CEAG plug, 1 x 32A 4P &
2 x 16A 4P CEAG sockets,
and 10m of HOFBR braided cable
Order Code: PNDU440/10-12EX/CEA

119

SA POWERNET EX MDU 440V 4-way
c/w CEAG plug, 4 x 16A 4P CEAG sockets,
and 10m of HOFBR braided cable
Order Code: PNDU440/10-4EX/CEA

119

3.8KVA TRANSFORMER

SA POWERNET EX 3.8KVA Transformer
4-way 230V-110V CTE
Order Code: PNLT230110CEA

123

SA POWERNET EX 3.8KVA Transformer
4-way 440V-110V CTE
Order Code: PNLT440110CEA

123

SA POWERNET EX 3.8KVA Transformer
4-way 440V-230V
Order Code: PNLT440230CEA

123

400VA TRANSFORMER

SA POWERNET EX Transformer 4-way
230-24V 400VA c/w 1 x 16A CEAG plug,
4 x ATX sockets, and 15m of HOFBR braided cable
Order Code: TRA23024/400-4EX/CEA

127

SA POWERNET EX Transformer 4-way
110-24V 400VA c/w 1 x 16A CEAG plug,
4 x ATX sockets, and 15m of HOFBR braided cable
Order Code: TRA11024/400-4EX/CEA

127

SA POWERNET EX Transformer CTE 4-way
230-110V 400VA c/w 1 x 16A CEAG plug,
4 x CEAG sockets, and 15m of HOFBR braided cable
Order Code: TRAC230110/C400-4EX/CEA

127

SA POWERNET EX Transformer 4-way
230-42V 400VA c/w 1 x 16A CEAG plug,
4 x CEAG sockets, and 15m of HOFBR braided cable
Order Code: TRA23042/C400-4EX/CEA

127

SPLITTER BOX

SA POWERNET EX Splitter Unit 4-way 110V
c/w 1 x 16A CEAG plug, 4 x 16A CEAG sockets,
and 15m of braided HOFBR cable
Order Code: PNSB110/15-4EX/CEA

131

SA POWERNET EX Splitter Unit 4-way 230V
c/w 1 x 16A CEAG plug, 4 x 16A CEAG sockets,
and 15m of braided HOFBR cable
Order Code: PNSB230/15-4EX/CEA

131

SA POWERNET EX Splitter Unit 4-way 110V
c/w 1 x 16A STAHL plug, 4 x 16A STAHL sockets,
and 15m of braided HOFBR cable
Order Code: PNSB110/15-4EX/STA

131

SA POWERNET EX Splitter Unit 4-way 230V
c/w 1 x 16A STAHL plug, 4 x 16A STAHL sockets,
and 15m of braided HOFBR cable
Order Code: PNSB230/15-4EX/STA

131

EXTENSION REEL

SA POWERNET EX Extension Reel 110V
c/w 1 x 16A CEAG plug, 1 x 16A CEAG socket,
and 25m of braided HOFBR cable
Order Code: PNER110EX/25HRE/CEA

135

SA POWERNET EX Extension Reel 230V
c/w 1 x 16A CEAG plug, 1 x 16A CEAG socket,
and 25m of braided HOFBR cable
Order Code: PNER230EX/25HRE/CEA

135

EXTENSION LEAD

SA POWERNET EX Extension Lead 24V
c/w 1 x 16A ATX plug, 1 x 16A ATX socket,
and 20m of braided HOFBR cable (HRE)
Order Code: PNEL24EX20HRE/ATX16/3P

139

SA POWERNET EX Extension Lead 110V
c/w 1 x 16A CEAG plug, 1 x 16A CEAG socket,
and 15m of braided HOFBR cable
Order Code: PNEL110EX15HRE/CEA16/3P

139

SA POWERNET EX Extension Lead 110V
c/w 1 x 16A CEAG plug, 1 x 16A CEAG socket,
and 25m of braided HOFBR cable
Order Code: PNEL110EX25HRE/CEA16/3P

139

SA POWERNET EX Extension Lead 230V
c/w 1 x 16A CEAG plug, 1 x 16A CEAG socket,
and 15m of braided HOFBR cable
Order Code: PNEL230EX15HRE/CEA16/3P

139

SA POWERNET EX Extension Lead 230V
c/w 1 x 16A CEAG plug, 1 x 16A CEAG socket,
and 25m of braided HOFBR cable
Order Code: PNEL230EX25HRE/CEA16/3P

139

SA POWERNET EX Extension Lead 400V
c/w 1 x 32A 4P CEAG plug, 1 x 32A 4P CEAG socket,
and 25m of braided HOFBR cable (HR)
Order Code: PNEL400EX25HR/CEA32/4P

139



NOTES

Lined area for taking notes on page 146.



NOTES

Grid-lined area for taking notes on page 147.



Head Office (UK)

10 Clifton View
East Mains Industrial Estate
Broxburn
EH52 5NE

T +44 (0)333 240 6111

F +44 (0)333 240 6555

info@saequip.com

European Office

Oud Camp 22
3155 DL Maasland
The Netherlands

T +31 (0)88 697 2590

saequip.com

Follow us on: [in](#) [f](#) [t](#) [g+](#)

Copyright © 2017 SA Equip LLP. All rights reserved. E&OE. V2.



PERFORMANCE IN THE EXTREME



Head Office (UK)

T **+44 (0)333 240 6111**

European Office

T **+31 (0)88 697 2590**

info@saequip.com

saequip.com